

Approval body for construction products
and types of construction

Bautechnisches Prüfamt

An institution established by the Federal and
Laender Governments



European Technical Assessment

ETA-19/0386
of 29 November 2019

English translation prepared by DIBt - Original version in German language

General Part

Technical Assessment Body issuing the
European Technical Assessment:

Deutsches Institut für Bautechnik

Trade name of the construction product

JASTO-aggregate concrete masonry units (lightweight
aggregates)

Product family
to which the construction product belongs

Aggregate concrete masonry units (lightweight
aggregates) with specific moisture conversion factor F_m

Manufacturer

Jakob Stockschläder GmbH & Co. KG
Koblenzer Straße 34
56299 Ochtendung
DEUTSCHLAND

Manufacturing plant

Jakob Stockschläder GmbH & Co. KG
Koblenzer Straße 34
56299 Ochtendung
DEUTSCHLAND

This European Technical Assessment
contains

7 pages including 3 annexes which form an integral part
of this assessment

This European Technical Assessment is
issued in accordance with Regulation (EU)
No 305/2011, on the basis of

EAD 170006-00-0305

The European Technical Assessment is issued by the Technical Assessment Body in its official language. Translations of this European Technical Assessment in other languages shall fully correspond to the original issued document and shall be identified as such.

Communication of this European Technical Assessment, including transmission by electronic means, shall be in full. However, partial reproduction may only be made with the written consent of the issuing Technical Assessment Body. Any partial reproduction shall be identified as such.

This European Technical Assessment may be withdrawn by the issuing Technical Assessment Body, in particular pursuant to information by the Commission in accordance with Article 25(3) of Regulation (EU) No 305/2011.

Specific part

1 Technical description of the product

The construction products "JASTO Therm", "JASTO Super-Therm" and "JASTO Therm-Plansteine Vbl SW" are aggregate concrete masonry units (lightweight aggregates), category I according to EN 771-3. The construction products are made of cement regarding to EN 197-1, aggregates regarding to EN 12518 and if necessary admixtures.

The construction products contain a mass and volume fraction of $\leq 1,0\%$ of homogeneously distributed organic materials.

The aggregate concrete masonry units according to EN 771-3 show different types and dimensions (see annex 1 to 3). In addition the performance of the characteristic of a specific moisture conversion factor is given.

2 Specification of the intended use in accordance with the applicable European Assessment Document

The intended uses are different types of load bearing and non-load bearing applications in all forms of walling including single leaf, cavity, partitions, retaining, basement and general use below ground level, including walling for fire protection, thermal insulation, sound insulation according to EN 771-3. The products are particularly used for walls with specific requirements to thermal insulation.

3 Performance of the product and references to the methods used for its assessment

3.1 Mechanical Resistance and Stability (BWR 1)

Essential characteristic	Performance
Dimensions	see Annexes 1 to 3
Dimensional tolerances	see Annexes 1 to 3
Configuration	see Annexes 1 to 3
Compressive strength	no performance assessed
Dimensional stability	no performance assessed
Shear bonds strength	no performance assessed
Flexural bond strength	no performance assessed

3.2 Safety in case of fire (BWR 2)

Essential characteristic	Performance
Reaction to fire	see Annexes 1 to 3

3.3 Hygiene, health and the environment (BWR 3)

Essential characteristic	Performance
Water absorption	no performance assessed
Water vapour permeability	no performance assessed

English translation prepared by DIBt

3.4 Protection against noise (BWR 5)

Essential characteristic	Performance
Direct airborne sound insulation	no performance assessed

3.5 Energy economy and heat retention (BWR 6)

Essential characteristic	Performance
Thermal resistance	no performance assessed
Gross dry density	see Annexes 1 to 3
Net dry density	no performance assessed
Limit deviations of density	see Annexes 1 to 3
Specific moisture conversion factor F_m	see Annexes 1 to 3

3.6 General aspects

The verification of durability and serviceability is only ensured if the specifications of the technical file of the manufacturer are kept.

4 Assessment and verification of constancy of performance (AVCP) system applied, with reference to its legal base

In accordance with EAD No. 170006-00-0305, the applicable European legal act is: 97/740/EC

The system to be applied is: 2+

With regard to reaction to fire for products covered by this EAD the applicable European legal act is: 97/740/EC

The system to be applied is: 4

5 Technical details necessary for the implementation of the AVCP system, as provided for in the applicable EAD

Technical details necessary for the implementation of the AVCP system are laid down in the control plan deposited with Deutsches Institut für Bautechnik.

Issued in Berlin on 29 November 2019 by Deutsches Institut für Bautechnik

BD Dipl.-Ing. Andreas Kummerow
Head of Department

beglaubigt:
Apel

English translation prepared by DIBt

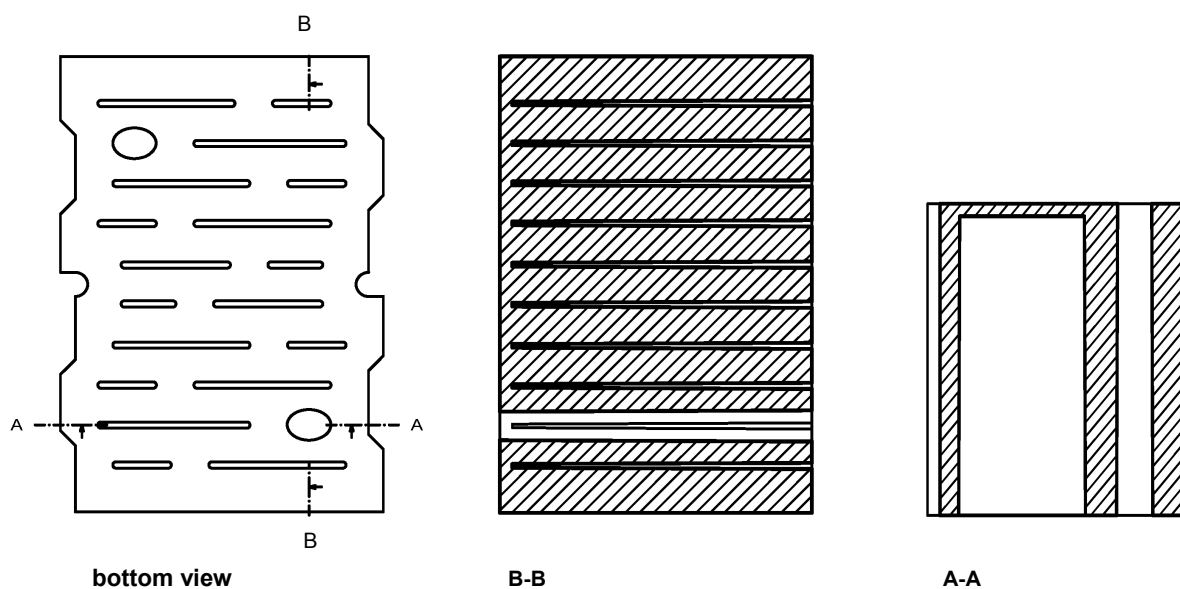
"Jasto Super-Therm"-Plansteine			
Aggregate concrete masonry units (lightweight aggregates) of category I load bearing or non-load bearing walls			
Dimensions	length l =	247 mm	
	width w =	365 mm	
	height h =	249,0 mm	
Tolerances Tolerance category D4	length l =	± 3,0 mm	
	width w =	± 3,0 mm	
	height h =	± 1,0 mm	
Flatness of bed faces		≤ 1,0 mm	
Plane parallelism of bed faces		≤ 1,0 mm	
Configuration		Example see below	
Reaction to fire		Class A1	
Specific moisture conversion factor F_m		1,05	
Gross dry density			
Mean value			
	minimum	kg/m ³	405
	maximum	kg/m ³	450
Individual value			
	minimum	kg/m ³	355
	maximum	kg/m ³	500

alternative

497	497
240	300

alternative

455	505	555
500	550	600
405	455	505
550	600	650



JASTO-aggregate concrete masonry units (lightweight aggregates)

Essential characteristics and configuration of
"Jasto Super-Therm"-Plansteine

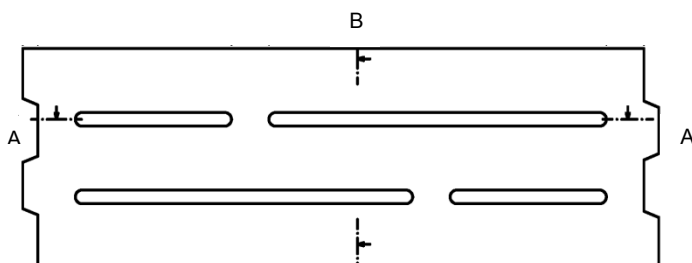
Annex 1

English translation prepared by DIBt

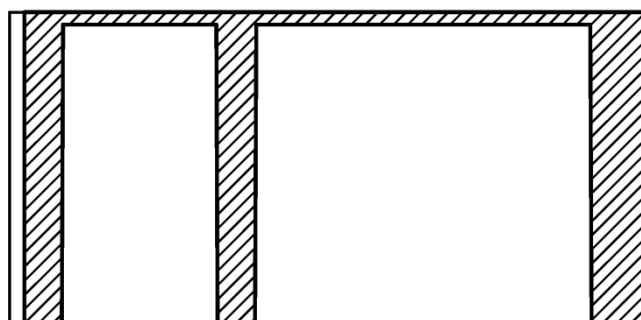
"Jasto Therm"-Plansteine			
Aggregate concrete masonry units (lightweight aggregates) of category I load bearing or non-load bearing walls			
Dimensions	length l =	497 mm	
	width w =	175 mm	
	height h =	249,0 mm	
Tolerances Tolerance category D4	length l =	± 3,0 mm	
	width w =	± 3,0 mm	
	height h =	± 1,0 mm	
Flatness of bed faces	≤ 1,0 mm		
Plane parallelism of bed faces	≤ 1,0 mm		
Configuration	Example see below		
Reaction to fire	Class	A1	
Specific moisture conversion factor F_m	1,05		
Gross dry density			
Mean value			
minimum	kg/m ³	405	
maximum	kg/m ³	450	
Individual value			
minimum	kg/m ³	355	
maximum	kg/m ³	500	

alternative

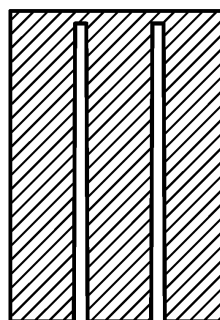
455	505	555	605	605
500	550	600	650	650
405	455	505	555	555
550	600	650	700	700



bottom view



A-A



B-B

JASTO-aggregate concrete masonry units (lightweight aggregates)

Essential characteristics and configuration of
"Jasto Therm"-Plansteine

Annex 2

English translation prepared by DIBt

"JASTO Therm-Plansteine Vbl SW"

Aggregate concrete masonry units
(lightweight aggregates) of category I
load bearing or non-load bearing walls

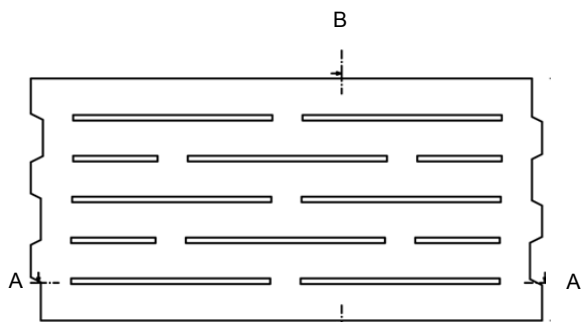
Dimensions	length l =	497 mm
	width w =	240 mm
	height h =	249,0 mm
Tolerances Tolerance category D4	length l =	± 3,0 mm
	width w =	± 3,0 mm
	height h =	± 1,0 mm
Flatness of bed faces	≤ 1,0 mm	
Plane parallelism of bed faces	≤ 1,0 mm	
Configuration	Example see below	
Reaction to fire	Class	A1
Specific moisture conversion factor F_m	1,05	
Gross dry density		
Mean value		
minimum	kg/m ³	405
maximum	kg/m ³	450
Individual value		
minimum	kg/m ³	355
maximum	kg/m ³	500

alternative

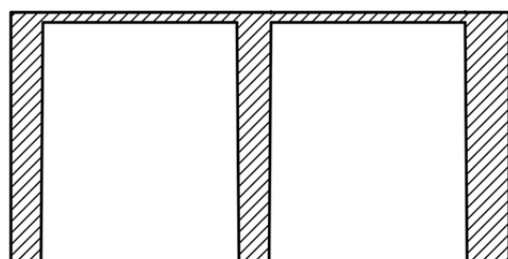
247			
300	365	425	490

alternative

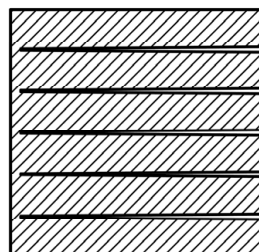
455	505	555
500	550	600
405	455	505
550	600	650



bottom view



A-A



B-B

JASTO-aggregate concrete masonry units (lightweight aggregates)

Essential characteristics and configuration of
"JASTO Therm-Plansteine Vbl SW"

Annex 3