

Approval body for construction products  
and types of construction

Bautechnisches Prüfamt

An institution established by the Federal and  
Laender Governments



## European Technical Assessment

**ETA-06/0178**  
**of 13 November 2020**

English translation prepared by DIBt - Original version in German language

### General Part

Technical Assessment Body issuing the  
European Technical Assessment:

Deutsches Institut für Bautechnik

Trade name of the construction product

RCD - System Stair 45 mm

Product family  
to which the construction product belongs

Prefabricated stair with steps and a load-bearing handrail  
made of solid wood or wood based products for use as an  
indoor stair in buildings

Manufacturer

RCD Treppensysteme GmbH & Co. KG  
Holler Landstraße 56a  
27798 Hude  
DEUTSCHLAND

Manufacturing plant

Carstens Tischlerei GmbH & Co. KG, Plant 1 to 150

This European Technical Assessment  
contains

15 pages including 3 annexes which form an integral part  
of this assessment

This European Technical Assessment is  
issued in accordance with Regulation (EU)  
No 305/2011, on the basis of

EAD 340006-00-0506

This version replaces

ETA-06/0178 issued on 14 February 2017

**European Technical Assessment**

**ETA-06/0178**

English translation prepared by DIBt

**Page 2 of 15 | 13 November 2020**

The European Technical Assessment is issued by the Technical Assessment Body in its official language. Translations of this European Technical Assessment in other languages shall fully correspond to the original issued document and shall be identified as such.

Communication of this European Technical Assessment, including transmission by electronic means, shall be in full. However, partial reproduction may only be made with the written consent of the issuing Technical Assessment Body. Any partial reproduction shall be identified as such.

This European Technical Assessment may be withdrawn by the issuing Technical Assessment Body, in particular pursuant to information by the Commission in accordance with Article 25(3) of Regulation (EU) No 305/2011.

## Specific part

### 1 Technical description of the product

The RCD – System Stair 45 mm is a prefabricated stair system, which consists of steps, landings, a railing (consisting of handrail, posts and balusters), fasteners, load-bearing bolts and wall ties. The stair can also be formed in folded plate style by additional risers.

On the wall-free side the steps are connected with each other by a load-bearing bolt and via balusters with the load-bearing handrail. In case of the folded plate style there are three load-bearing bolts at least inside of the riser. On the wall side each step is equipped with two wall ties which are anchored in the staircase wall. Alternatively, the staircase wall may also be replaced by a stringer or as on the wall-free side by a load-bearing handrail.

Steps, risers, landings, handrail and posts are made of solid wood or wood-based products, the balusters and the beams of the landings are made of steel or solid wood and the fasteners, load-bearing bolts and wall ties are made of steel.

The product description is given in Annex A. The material values, dimensions and tolerances of the components of the stair not indicated in the annexes shall correspond to the values laid down in the technical documentation<sup>1</sup>.

### 2 Specification of the intended use in accordance with the applicable European Assessment Document

The performances given in Section 3 are only valid if the stair is used in compliance with the specifications and conditions given in Annex B.

The verification and assessment methods on which this European Technical Assessment is based lead to the assumption of a working life of the stair of at least 50 years. The indications given on the working life cannot be interpreted as a guarantee given by the producer, but are to be regarded only as a means for choosing the right products in relation to the expected economically reasonable working life of the works.

<sup>1</sup> The technical documentation comprises all information of the manufacturer necessary for the production, installation and maintenance of the stair; these are in particular the structural analysis, design drawings and the manufacturer's installation instructions. The part to be treated confidentially is deposited with Deutsches Institut für Bautechnik and, as far as this is relevant to the tasks of the approved bodies involved in the procedure of attestation of the AVCP-System, shall be handed over to the approved body.

### 3 Performance of the product and references to the methods used for its assessment

#### 3.1 Mechanical resistance and stability (BWR 1)

Essential characteristic	Performance
Load-bearing capacity <ul style="list-style-type: none"> <li>- Load-bearing capacity of the stair</li> <li>- Load-bearing capacity of the stair</li> <li>- Load-bearing capacity of components of the stair</li> <li>- Load-bearing capacity of fixings</li> </ul>	$Q_{Rk}$ , $q_{Rk}$ and $h_{Rk}$ : See Annex C2 $H_{Rk}$ : No performance assessed $M_{Rk}$ , $V_{Rk}$ , $N_{Rk}$ , $E$ , $G$ , $f_{mk}$ und $f_{vk}$ : See technical documentation of this European Technical Assessment See technical documentation of this European Technical Assessment
Load-Displacement behaviour	$w_q$ and $w_Q$ : See Annex C2
Vibration behaviour	First natural frequency: $f_1 \geq 5$ Hz Deflection under a single load $F = 1$ kN: $w_{Q1} \leq 5$ mm
Prevention of progressive collapse	Failure of individual components of the stair does not lead to a progressive collapse of the complete stair
Residual load-bearing capacity	Local material failure does not lead to an abrupt total loss of load-bearing capacity of the steps.
Long-term behaviour	Load-bearing capacity are ensured under an appropriate use and maintenance over the indicated working life
Resistance to earthquakes	No performance assessed
Durability against physical, chemical, biological agents	Adequate durability for the intended use under an appropriate use and maintenance

#### 3.2 Safety in case of fire (BWR 2)

Essential characteristic	Performance
Reaction to fire	See Annex A6
Resistance to fire	No performance assessed

#### 3.3 Hygiene, health and the environment (BWR 3)

Essential characteristic	Performance
Release of formaldehyde	Particle board with CPL-laminate: Class E1 Solid wood and other wood-based panel: Wood adhesive does not contain formaldehyde
Release of pentachlorophenol	Particle board with CPL-laminate: $\leq 5$ ppm Solid wood and other wood-based panels: no pentachlorophenol contained
Radioactive emission	No performance assessed

### 3.4 Safety in use (BWR 4)

Essential characteristic	Performance
Geometry	See Annex C1
Slipperiness	No performance assessed
Safety equipment	Barrier and handrail are components of the stair (see Annexes A1 to A4 and C1) If vertical balusters, arranged between step and handrail, used as fill-in elements, a climb ability for infants will not be supported Tactility and visibility: No performance assessed
Safe breakage	No brittle failure of individual components
Impact resistance	No performance assessed

### 4 Assessment and verification of constancy of performance (AVCP) system applied, with reference to its legal base

In accordance with the European Assessment Document EAD No. 340006-00-0506 the applicable European legal act is: 1999/89/EC

The System to be applied is: 2+

In addition, with regard to reaction to fire for products covered by the European Assessment Document EAD No. 340006-00-0506 the applicable European legal act is: 2001/596/EC

The System to be applied is: 4

### 5 Technical details necessary for the implementation of the AVCP system, as provided for in the applicable European Assessment Document

Technical details necessary for the implementation of the AVCP system are laid down in the control plan deposited at Deutsches Institut für Bautechnik.

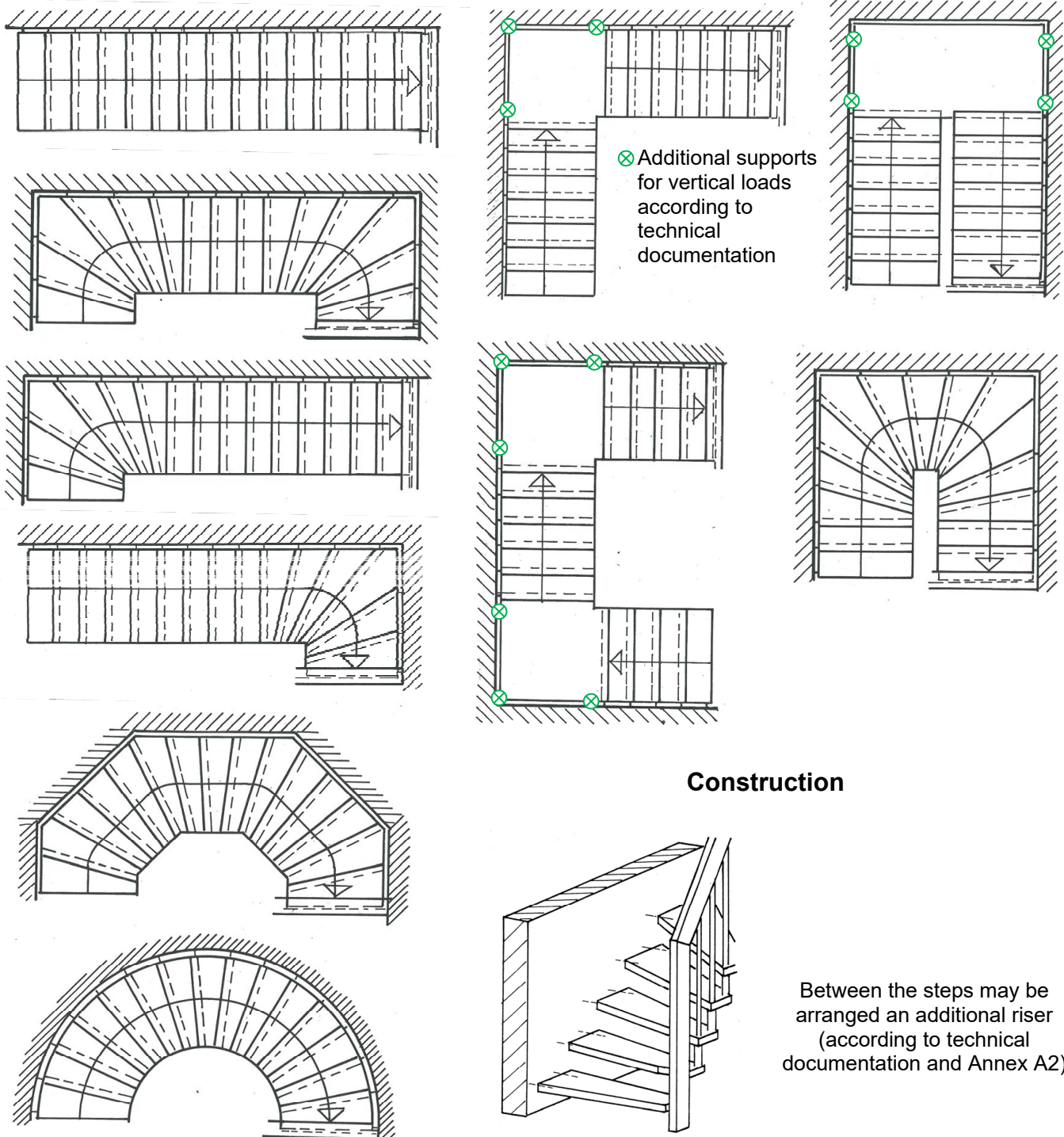
Issued in Berlin on 13 November 2020 by Deutsches Institut für Bautechnik

Dipl.-Ing. Beatrix Wittstock  
Head of Section

*beglaubigt:*  
Stiller

## Types of plan

Walking line is exemplified, position may be chosen freely within the walking zone,  
Walking zone is 20 % of the clear width of the stair in the middle of the stair



RCD – System Stair 45 mm

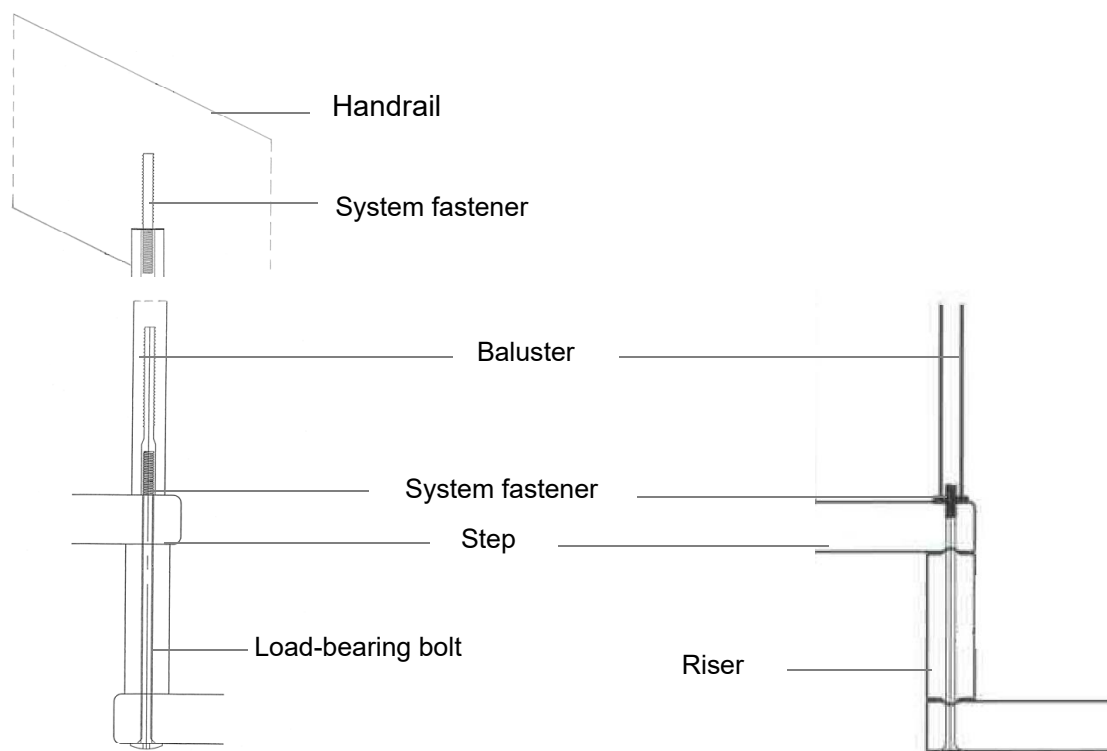
Product and intended use

Annex A1

## Baluster system

with load-bearing bolt

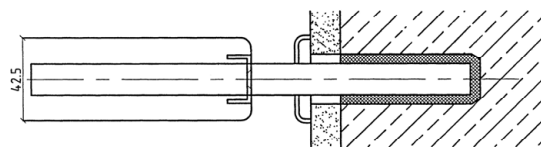
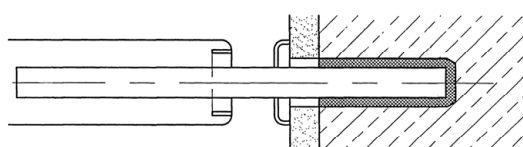
with riser



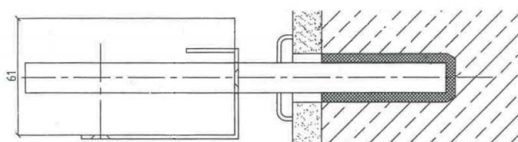
## Step – wall tie – joint

d = 45 mm and 47 mm with ferrule

d = 42.5 mm with steel section



d = 61 mm with steel angle



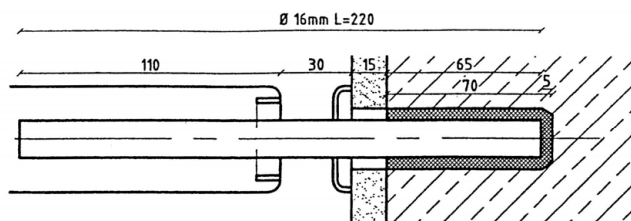
**RCD – System Stair 45 mm**

Baluster system,  
Step – wall tie - joint

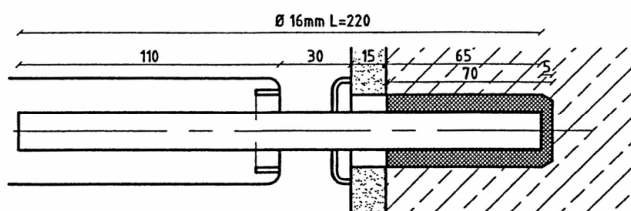
**Annex A2**



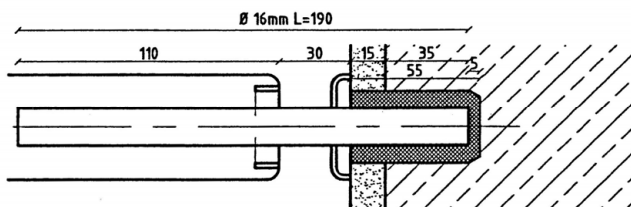
## Wall ties



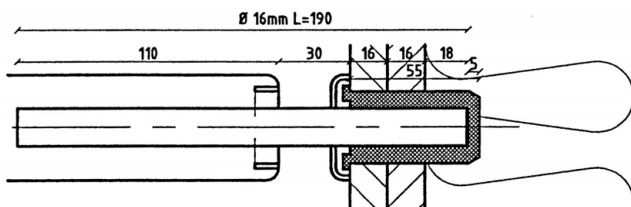
masonry  
concrete  
autoclaved aerated concrete  
(bearing Ø 25 mm)



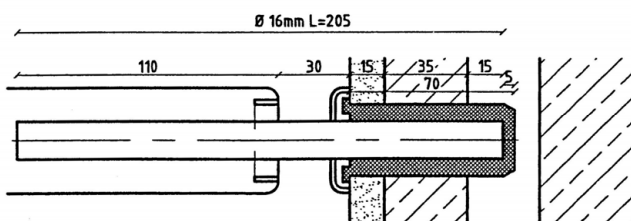
masonry  
concrete  
autoclaved aerated concrete  
(bearing Ø 30 mm)



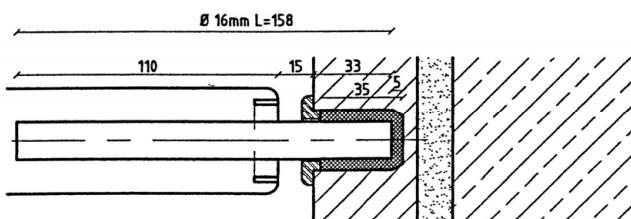
concrete



OSB (2x15 mm)  
particleboard (2x16 mm)



hollow brick



stringer (solid wood)

regular wall distance may be exceeded 10 mm

**RCD – System Stair 45 mm**

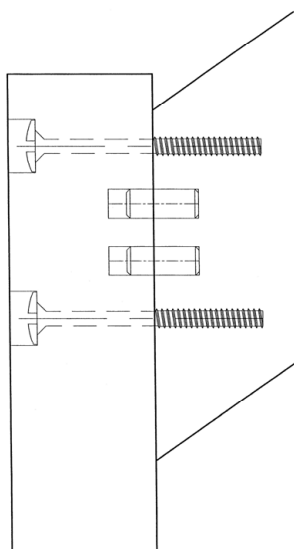
Wall ties

**Annex A3**

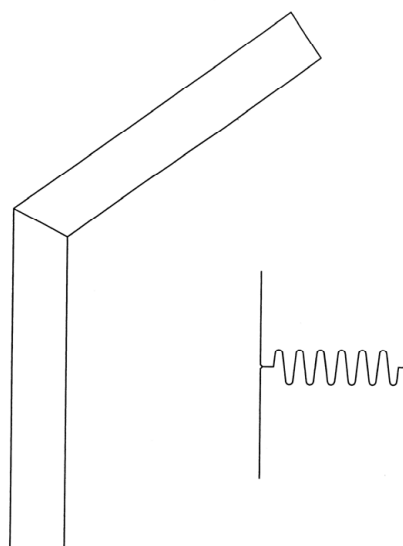


## Post – handrail joint

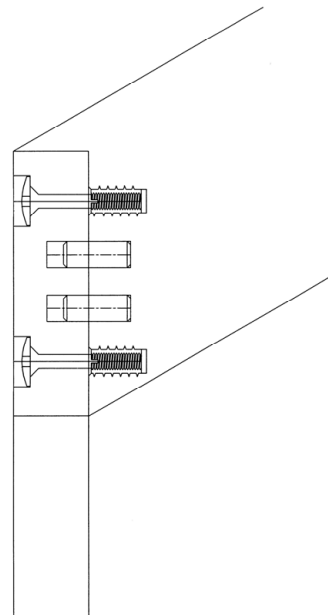
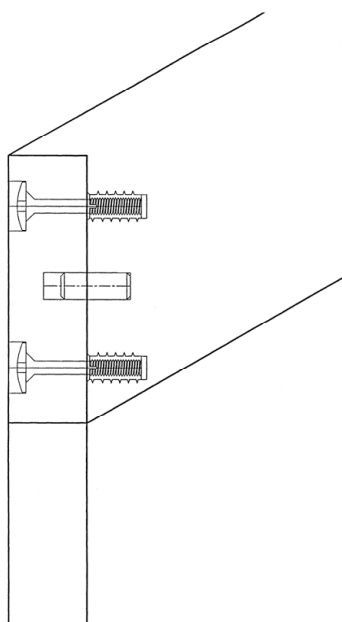
screwed



finger jointed



## Handrail corner joint



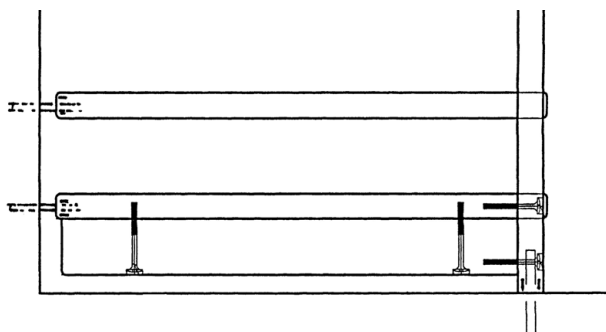
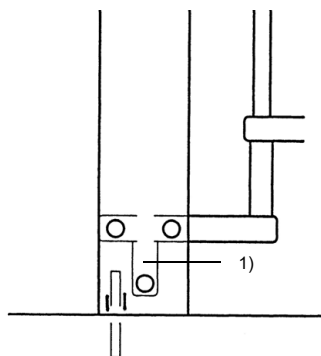
More details according to technical documentation

**RCD – System Stair 45 mm**

Post – handrail joint,  
Handrail corner joint

**Annex A4**

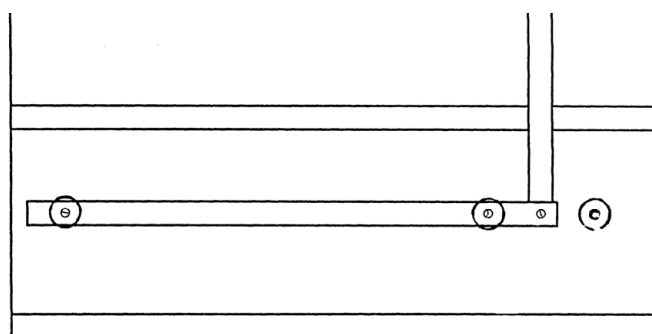
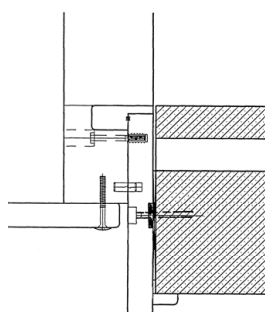
## Post joint at bottom



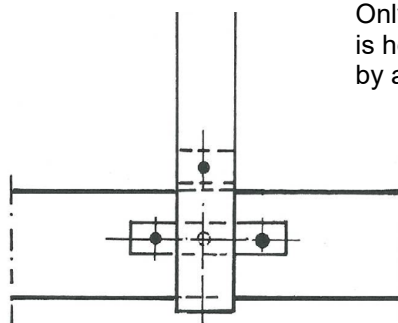
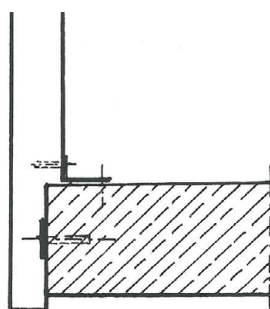
- 1) The frame is not necessary, if the post is fixed on a plank on the floor slab or the post is supported by a side railing or fixed in a steel sleeve.

## Post joint at the top

With plank on the floor slab



Without plank on the floor slab



Only possible, when the post is horizontal supported (e.g. by a side railing)

More details according to technical documentation

**RCD – System Stair 45 mm**

Post joint at bottom and at the top

**Annex A5**

**Table 1: Minimum dimensions of relevant stair components and reaction to fire**

Component		Material <sup>1)</sup>	Dimension		Value	Reaction to fire
step	with ferrule	solid wood <sup>2)</sup>	thickness	[mm]	45	D-s2, d0
		wood-based panel <sup>8)</sup>	thickness	[mm]	47,2	<sup>12)</sup>
	with steel section	solid wood <sup>2) 3)</sup>	thickness	[mm]	42,5	D-s2, d0
		wood-based panel <sup>4)</sup>	thickness	[mm]	45	<sup>12)</sup>
		wood-based panel <sup>5)</sup>	thickness	[mm]	42,5	
	with steel angle	wood-based panel <sup>6)</sup>	thickness	[mm]	61	
Riser, landing plate		solid wood <sup>2) 3)</sup>	thickness	[mm]	45	D-s2, d0
		wood-based panel <sup>4) 5)</sup>	thickness	[mm]	45	<sup>12)</sup>
		wood-based panel <sup>6)</sup>	thickness	[mm]	61	
Landing beam		steel	- <sup>11)</sup>		- <sup>11)</sup>	A1
		solid wood <sup>11)</sup>	- <sup>11)</sup>		- <sup>11)</sup>	D-s2, d0
upper flange of the railing / hand-rail	straight flights only finger jointed	solid wood <sup>2) 3)</sup>	height / width	[mm]	160 / 53 (45) <sup>9)</sup>	D-s2, d0
		wood-based panel <sup>7)</sup>	height / width	[mm]	160 / 55	<sup>12)</sup>
	other flights	solid wood <sup>2) 3)</sup>	height / width	[mm]	160 / 45	D-s2, d0
		wood-based panel <sup>4)</sup>	height / width	[mm]	160 / 45	<sup>12)</sup>
post	straight flights only finger jointed	solid wood <sup>2) 3)</sup>	cross section a/b	[mm]	160 / 53 (45) <sup>9)</sup>	D-s2, d0
		wood-based panel <sup>7)</sup>	cross section a/b	[mm]	160 / 55	<sup>12)</sup>
	other flights	solid wood <sup>2) 3)</sup>	cross section a/b	[mm]	80 / 80 or 160 /45	D-s2, d0
		diameter	[mm]	90		
		wood-based panel <sup>4)</sup>	cross section a/b	[mm]	90 / 90 or 160 /45	<sup>12)</sup>
baluster		solid wood <sup>2) 3)</sup>	diameter	[mm]	30	D-s2, d0
		steel	diameter	[mm]	14	A1
load-bearing bolt		steel	diameter	[mm]	10	A1
load-bearing bolt (distance sleeve)		solid wood <sup>2) 3)</sup>	diameter	[mm]	40	D-s2, d0
		steel	diameter	[mm]	16 <sup>10)</sup>	A1
system fastener		steel	- <sup>11)</sup>		- <sup>11)</sup>	A1
wall tie		round steel	diameter	[mm]	16	A1
			embedment depth wall	[mm]	See Annex A3	
			embedment depth step	[mm]	110	
bearing sleeve (wall tie)		plastic	diameter	[mm]	25	<sup>12)</sup>

- <sup>1)</sup> characteristic values of materials according to the technical documentation
- <sup>2)</sup> only hardwood of the following species: beech, oak, maple, sapelli, common ash, nut tree, mutenye
- <sup>3)</sup> only hardwood of the following species: cherry tree
- <sup>4)</sup> wood-based panel: bamboo type I and type II (only finger jointed), layer composition according to technical documentation
- <sup>5)</sup> wood-based panel: core of sapelli with thick layer veneer, layer composition according to technical documentation
- <sup>6)</sup> wood-based panel: particle board with CPL-laminate, layer composition according to technical documentation
- <sup>7)</sup> wood-based panel: core of ash with bamboo solid wood panels, layer composition acc. to technical documentation
- <sup>8)</sup> wood-based panel: LAMINA, layer composition according to technical documentation
- <sup>9)</sup> value in brackets if handrail is fixed in height of the floor slab
- <sup>10)</sup> with washer Ø 30 mm
- <sup>11)</sup> characteristic values according to the technical documentation
- <sup>12)</sup> no performance assessed

**RCD – System Stair 45 mm**

Minimum dimensions of relevant stair components  
and reaction to fire

**Annex A6**

## Specification of intended use (Part 1)

### Intended use:

- European Technical Assessment applies for a construction system.
- For the specific case of use the corresponding type of stair is manufactured within the context of the values defined in this European Technical Assessment.
- Values of this ETA applies to all types of stairs according to Annex A1; the real dimensions follow in accordance with the relevant case of use.

### Stair subject to:

- Static and quasi static loads

### Use conditions:

- Indoor stair
- Air temperatures between +5 °C and +30 °C
- Relative air humidity between 30% and 70%

### Design:

- Design of the stair according to the annexes and the technical documentation of this European Technical Assessment.
- Fastening of the stair to the construction works according to the annexes and the technical documentation of this Technical European Assessment.
- Verification of the transmission of loads to the construction works by the civil engineer responsible for the construction works.
- Load bearing capacity at ultimate limit state:

$$q_k \cdot \gamma_Q \leq q_{Rk} / \gamma_M$$

$$Q_k \cdot \gamma_Q \leq Q_{Rk} / \gamma_M$$

$$h_k \cdot \gamma_Q \cdot \psi_0 \leq h_{Rk} / \gamma_M$$

with

$q_{Rk}$ ,  $Q_{Rk}$ ,  $h_{Rk}$ : characteristic values of resistance; see Table 3

$\gamma_M$ : recommended material partial safety factor; see Table 3

$q_k$ ,  $Q_k$ ,  $h_k$ : characteristic values of imposed loads according to EN 1991-1-1:2002 + AC:2009

$\gamma_Q = 1.5$ : recommended partial safety factor, in absence of other national regulations

$\psi_0 = 0.7$ : recommended combination factor, in absence of other national regulations

- Maximum characteristic values of imposed loads under consideration of the partial factors mentioned above; see Table 5

**RCD – System Stair 45 mm**

Specification of intended use (Part 1)

**Annex B1**

## Specification of intended use (Part 2)

### Installation:

- Installation by personal appropriately trained and authorized by the manufacturer by means of the technical documentation of this European Technical Assessment
- Installation only in the way as specified in the technical documentation of this European Technical Assessment
- Installation of timber components when moisture content of timber components is  $8 \pm 2 \%$
- Sufficient support of the stair when assembling
- Installation of stair components without imposed deformations
- Installation of stair components without significant defects and cracks
- Replacing of stair components, which begin tearing when assembling
- Bolted connections are protected such that they will not be loosened by vibrations

### Indication of the manufacturer:

- Ensure that all persons involved will be appropriately informed about the specific conditions according to sections 1 and 2 (including the annexes to which reference is being made as well as the not confidential parts of the technical documentation deposited to this European Technical Assessment)
- Packaging of timber components such that the wood moisture is  $8 \pm 2 \%$  during transport and storage
- Instructions for use should provide information as to use, maintenance and repair of the stair. Including the information of avoidance of moisture penetration of the timber components and of retightens the bolting of the load-bearing bolts and connections according to Annexes A2 to A4 after the first heating season and the information on the relationship between moisture content of timber components, air temperature and relative air humidity

**RCD – System Stair 45 mm**

Specification of intended use (Part 2)

**Annex B2**

**Table 2: Geometry**

Designation			Dimension	
			Minimum	Maximum
going	step on walking line <sup>1)</sup>	[mm]	210	370 <sup>2)</sup>
	tapered step	[mm]	60 <sup>2) 3)</sup>	600 <sup>2) 4)</sup>
rise of the stairs <sup>1)</sup>		[mm]	140 <sup>2)</sup>	210
pitch of the walking line <sup>1)</sup>		[°]	21	45
overlap of the steps		[mm]	40	- <sup>5)</sup>
number of rises		[-]	3	16
openings	between barrier and other parts of the stair	[mm]	0	0
	between stairs and wall	[mm]	- <sup>5)</sup>	40
	between consecutive steps	[mm]	- <sup>5)</sup>	167.5
	between balusters	[mm]	40	130
clear width of stairs		[mm]	500	1000
minimum headroom		[mm]	- <sup>5)</sup>	
length of the flight		[mm]	- <sup>5)</sup>	4050
thickness of steps	with ferrule	[mm]	45	- <sup>5)</sup>
	with steel section	[mm]	42,5	- <sup>5)</sup>
	with steel angle	[mm]	61	- <sup>5)</sup>
height of the railing (barrier) / handrail		[mm]	900	1100
handrail	width	[mm]	45	55
	height	[mm]	160	- <sup>5)</sup>
	clear distance to adjacent components	[mm]	50	- <sup>5)</sup>

<sup>1)</sup> values are constant within one flight

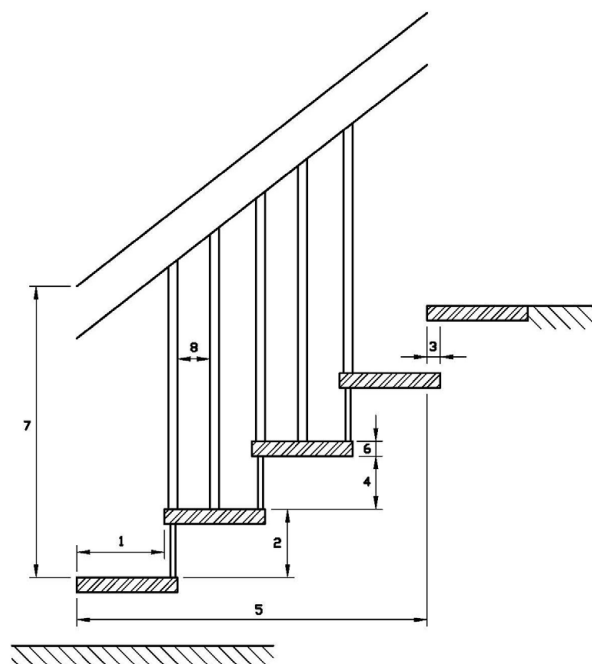
<sup>2)</sup> tolerance between nominal value and actual value =  $\pm 5$  mm

<sup>3)</sup> inside of tapered step

<sup>4)</sup> outside of tapered step

<sup>5)</sup> not relevant

- 1 going
- 2 rise
- 3 overlap
- 4 opening between consecutive steps
- 5 length of the flight
- 6 thickness of steps
- 7 height of the railing / barrier
- 8 opening between balusters



**RCD – System Stair 45 mm**

Geometry of the stair

**Annex C1**

**Table 3: Load-bearing capacity - Characteristic values of resistance**

Part of stair	Type of loading	Characteristic values of resistance			$\gamma_M$
flight	vertical variable uniformly distributed load	$q_{Rk}$	[kN/m <sup>2</sup> ]	7,9	1,5 <sup>1)</sup>
	vertical variable single load	$Q_{Rk}$	[kN]	4,5	
	horizontal variable uniformly distributed load on barrier	$h_{Rk}$	[kN/m]	0,8	
Landing beams	vertical variable uniformly distributed load	$q_{Rk}$	[kN/m <sup>2</sup> ]	5,8	1,1 <sup>2)</sup>
	vertical variable single load	$Q_{Rk}$	[kN]	3,3	

<sup>1)</sup> Recommended partial safety factor (timber decisive), in absence of other national regulations

<sup>2)</sup> Recommended partial safety factor (steel decisive), in absence of other national regulations

**Table 4: Deflections under loading**

Deflection of the flight under uniformly distributed load			
uniformly distributed load	$q_k$	[kN/m <sup>2</sup> ]	3,5
length of the median line of the flight	$L$	[mm]	4050
deflection related to the median line of the flight	$w_q$	[mm]	$\leq L/200$
Deflection of the step under single point load			
single load	$Q_k$	[kN]	2,0
clear width of the stair	$L$	[mm]	1000
deflection related to the clear width of the stair	$w_Q$	[mm]	$\leq L/200$

**Table 5: Imposed loads**

Type of loading	Imposed loads		
vertical variable uniformly distributed load	$q_k$	[kN/m <sup>2</sup> ]	3,5
vertical variable single load	$Q_k$	[kN]	2,0
horizontal variable uniformly distributed load on barrier	$h_k$	[kN/m]	0,5

**RCD – System Stair 45 mm**

Load-bearing capacity – Characteristic values of resistance,  
Deflections under loading,  
Imposed loads

**Annex C2**