

Approval body for construction products
and types of construction

Bautechnisches Prüfamt

An institution established by the Federal and
Laender Governments



European Technical Assessment

ETA-07/0142
of 24 September 2021

English translation prepared by DIBt - Original version in German language

General Part

Technical Assessment Body issuing the
European Technical Assessment:

Deutsches Institut für Bautechnik

Trade name of the construction product

fischer drop-in anchor EA II

Product family
to which the construction product belongs

Fasteners for use in concrete for
redundant non-structural systems

Manufacturer

fischerwerke GmbH & Co. KG
Klaus-Fischer-Straße 1
72178 Waldachtal
DEUTSCHLAND

Manufacturing plant

fischerwerke

This European Technical Assessment
contains

15 pages including 3 annexes which form an integral part
of this assessment

This European Technical Assessment is
issued in accordance with Regulation (EU)
No 305/2011, on the basis of

EAD 330747-00-0601, Edition 06/2018

This version replaces

ETA-07/0142 issued on 9 December 2016

European Technical Assessment

ETA-07/0142

English translation prepared by DIBt

Page 2 of 15 | 24 September 2021

The European Technical Assessment is issued by the Technical Assessment Body in its official language. Translations of this European Technical Assessment in other languages shall fully correspond to the original issued document and shall be identified as such.

Communication of this European Technical Assessment, including transmission by electronic means, shall be in full. However, partial reproduction may only be made with the written consent of the issuing Technical Assessment Body. Any partial reproduction shall be identified as such.

This European Technical Assessment may be withdrawn by the issuing Technical Assessment Body, in particular pursuant to information by the Commission in accordance with Article 25(3) of Regulation (EU) No 305/2011.

Specific Part

1 Technical description of the product

The fischer drop-in anchor EA II is an anchor made of galvanised or stainless steel which is placed into a drilled hole and anchored by deformation-controlled expansion.

The fixture shall be anchored with a fastening screw or threaded rod according to Annex B 5.

The product description is given in Annex A.

2 Specification of the intended use in accordance with the applicable European Assessment Document

The performances given in Section 3 are only valid if the anchor is used in compliance with the specifications and conditions given in Annex B.

The verifications and assessment methods on which this European Technical Assessment is based lead to the assumption of a working life of the anchor of at least 50 years. The indications given on the working life cannot be interpreted as a guarantee given by the producer, but are to be regarded only as a means for choosing the right products in relation to the expected economically reasonable working life of the works.

3 Performance of the product and references to the methods used for its assessment

3.1 Safety in case of fire (BWR 2)

Essential characteristic	Performance
Reaction to fire	Class A1
Resistance to fire	See Annex C 3

3.2 Safety and accessibility in use (BWR 4)

Essential characteristic	Performance
Characteristic resistance for all load directions and modes of failure for simplified design	See Annex C 1 and C 2
Durability	See Annex B 1

4 Assessment and verification of constancy of performance (AVCP) system applied, with reference to its legal base

In accordance with European Assessment Document EAD No. 330747-00-0601, the applicable European legal act is: [97/161/EC].

The system to be applied is: 2+

5 Technical details necessary for the implementation of the AVCP system, as provided for in the applicable European Assessment Document

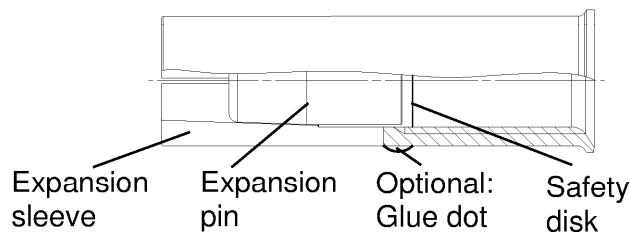
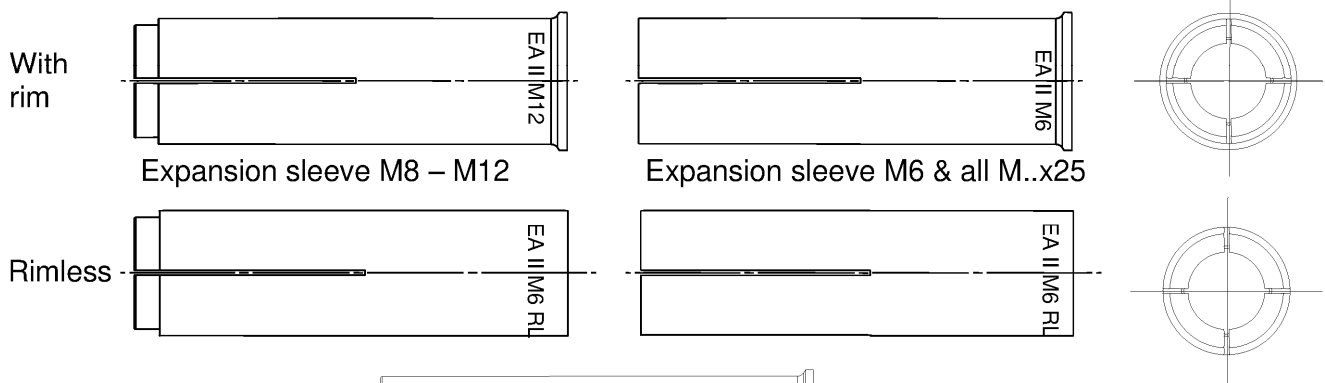
Technical details necessary for the implementation of the AVCP system are laid down in the control plan deposited with Deutsches Institut für Bautechnik.

Issued in Berlin on 24 Month 2021 by Deutsches Institut für Bautechnik

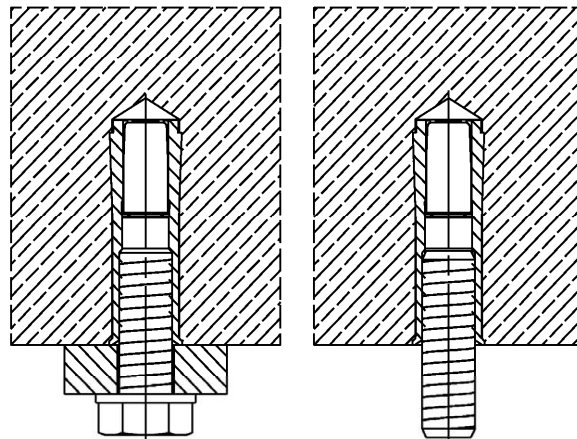
Dipl.-Ing. Beatrix Wittstock
Head of Section

beglaubigt:
Baderschneider

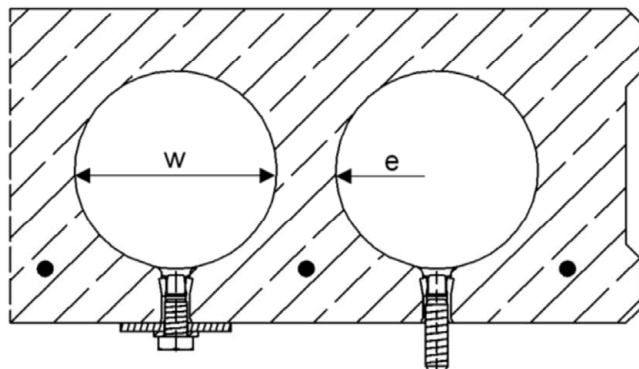
Only for use for redundant non-structural systems according to EN 1992-4:2018



Intended use in concrete



Intended use in precast pre-stressed hollow concrete slabs ($w/e \leq 4,2$) with a flange thickness $d_b \geq 35$ mm (or 30 mm → see Annex C2) and only for $h_{ef} = 25$ mm



(Fig. not to scale)

fischer drop-in anchor EA II

Product description
Installed condition
Anchor types

Annex A 1

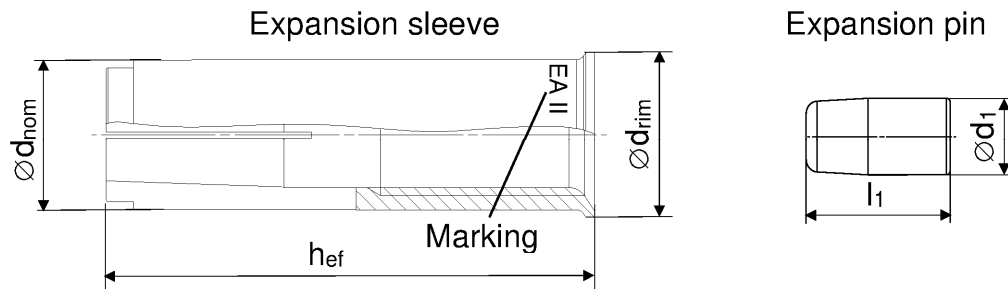
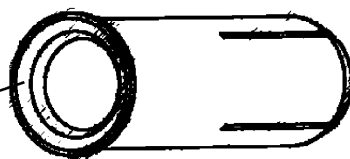


Table A2.1: Anchor size

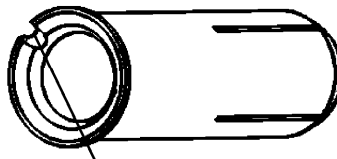
Anchor size EA II [mm]	M6x25	M6x30	M8x25	M8x30	M8x40	M10x25	M10x30	M10x40	M12x25	M12x50	M12 D
h_{ef}	25	30	25	30	40	25	30	40	25	50	50
$\varnothing d_{nom}$	8		10			12			15		16
$\varnothing d_{rim}$ (not applicable for EA II RL)	9,5		11,5			13,5			16,5		17,5
$\varnothing d_1$	5		6,5			8,5	8		10		
l_1	9	14	8	13,5		9	13,5	18,5	10,5	18,5	

**Distinctive
feature**



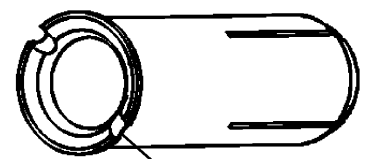
No groove for:

- EA II M6x30..
- EA II M8x30..
- EA II M10x40..
- EA II M12x50..



1 groove for:

- EA II M6x25..
- EA II M8x25..
- EA II M10x25..
- EA II M12x25..



2 grooves for:

- EA II M8x40..
- EA II M10x30..

Table A2.2: Marking on anchor body

galvanised steel (gvz)		stainless steel (R)	
with rim	rimless	with rim	rimless
EA II M6x25	EA II M6x25 RL	EA II M6x30 R	EA II M6x30 RL R
EA II M6x30	EA II M6x30 RL	EA II M8x30 R	EA II M8x30 RL R
EA II M8x25	EA II M8x25 RL	EA II M8x40 R	EA II M8x40 RL R
EA II M8x30	EA II M8x30 RL	EA II M10x30 R	EA II M10x30 RL R
EA II M8x40	EA II M8x40 RL	EA II M10x40 R	EA II M10x40 RL R
EA II M10x25	EA II M10x25 RL	EA II M12x50 R	EA II M12x50 RL R
EA II M10x30	EA II M10x30 RL	EA II M12x50 D R	EA II M12x50 RL D R
EA II M10x40	EA II M10x40 RL		
EA II M12x25	EA II M12x25 RL		
EA II M12x50	EA II M12x50 RL		
EA II M12x50 D	EA II M12x50 RL D		

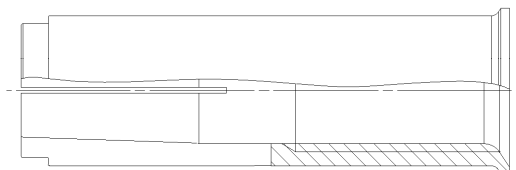
(Fig. not to scale)

fischer drop-in anchor EA II

Product description
Anchor types

Annex A 2

Expansion sleeve



Expansion pin

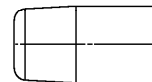


Table A3.1: Materials

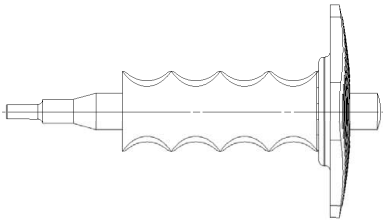
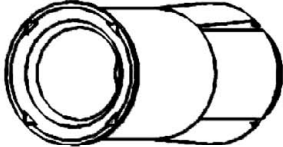
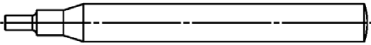
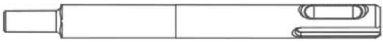
	Material	
Designation	galvanised steel ($\geq 5 \mu\text{m}$)	stainless steel (R)
Expansion sleeve	EN 10277:2018 or EN 10084:2008 or EN 10111:2008 or EN 10263:2018 or EN 10087:1999 or ASTM A29/A29M	EN 10088:2014
Expansion pin		
Fastening screw or threaded rod	steel, property class 4.6, 5.6, 5.8 or 8.8 according to EN ISO 898-1:2013	property class 50, 70 or 80 according to EN ISO 3506:2020

fischer drop-in anchor EA II

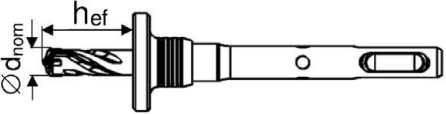
Product description
Materials

Annex A 3

Setting & drilling tools

Setting tools	Marking	Description	Marking on EA II with rim and rimless
	EHS Plus M..x hef	Manual setting tool with hand guard	
	EHS M..x hef	Manual setting tool basic format	
	EMS M..x hef	Machine setting tool with SDS Plus	No marking

Drilling tools

	EBB $\varnothing d_{nom} \times h_{ef}$	Stop drill
Or other usual drillers		

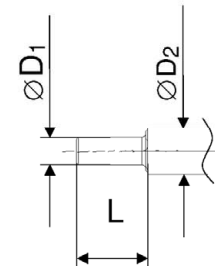


Table A4.1: Corresponding drill bits and parameters of setting tools

Manual setting tool	Machine setting tool	Stop drill	For anchor size	$\varnothing D1$ [mm]	$\varnothing D2$ [mm]	L [mm]
EHS (Plus) M6x25/30	EMS M6x25/30	EBB 8x25 EBB 8x30	EA II M6x25 EA II M6x30	4,8	9,0	17,0
EHS (Plus) M8x25/30	EMS M8x25/30	EBB 10x25 EBB 10x30	EA II M8x25 EA II M8x30	6,4	11,0	18,0
EHS (Plus) M8x40	EMS M8x40	EBB 10x40	EA II M8x40			28,0
EHS (Plus) M10x25/30	EMS M10x25/30	EBB 12x25 EBB 12x30	EA II M10x25 EA II M10x30	7,9	13,0	18,0
EHS (Plus) M10x40	EMS M10x40	EBB 12x40	EA II M10x40			24,0
EHS (Plus) M12x25	EMS M12x25	EBB 15x25	EA II M12x25	10,2	16,5	15,2
EHS (Plus) M12x50	EMS M12x50	EBB 15x50	EA II M12x50	10,2	16,5	30,0
EHS (Plus) M12x50	EMS M12x50	EBB 16x50	EA II M12x50 D			

(Fig. not to scale)



fischer drop-in anchor EA II

Intended Use
Setting & Drilling tools

Annex A 4

Specifications of intended use

Anchorage subject to:

fischer drop-in anchor EA II (all versions)		M6	M8	M10	M12
Hammer drilling with standard drill bit		All types			
Hammer drilling with hollow drill bit with automatic cleaning					
Material	Steel Zinc plated Stainless steel R	✓			
Static and quasi-static loads					
Cracked and uncracked concrete					
Fire exposure in concrete C12/15 to C50/60					
Fire exposure in prestressed hollow concrete slabs		No performance assessed			

Base materials:

- Compacted reinforced and unreinforced normal weight concrete without fibres (cracked and uncracked) according to EN 206:2013+A1:2016
- Strength classes C12/15 to C50/60 according to EN 206:2013+A1:2016
- Precast prestressed hollow concrete slabs with $w/e \leq 4,2$ and strength classes C30/37 to C50/60: M6x25, M8x25, M10x25 and M12x25

Use conditions (Environmental conditions):

- Structures subject to dry internal conditions: **EA II, EA II R**
- For all other conditions according to EN 1993-1-4:2006 + A1:2015 corresponding to corrosion resistance class CRC III **EA II R with $h_{ef} \geq 30$ mm**

Design:

- Anchorages are designed under the responsibility of an engineer experienced in anchorages and concrete work
- Verifiable calculation notes and drawings are prepared taking account of the loads to be anchored. The position of the anchor is indicated on the design drawings (e. g. position of the anchor relative to reinforcement or to supports, etc.)
- Only for use for redundant non-structural system according to EN 1992-4:2018, Chapter 7.3. Design Method B according to EN 1992-4:2018.
- Anchorages under fire exposure are designed according to EN 1992-4:2018 Annex D

Installation:

- Anchor installation carried out by appropriately qualified personnel and under the supervision of the person responsible for technical matters of the site
- Create drill hole with hammer drill or with hollow drill and vacuum cleaner
- The anchor may only be used once
- In case of aborted hole: New hole must be drilled at a minimum distance of twice the depth of the aborted hole or closer, if the hole is filled with a high strength mortar (e.g. FIS EM Plus, FIS SB or FIS V Plus) and only if the hole is not in the direction of the oblique tensile or shear load
- Anchor expansion by impact using the setting tools given in Annex A 4. The anchor is properly set, if the stop of the setting tool reaches the expansion sleeve. The manual setting tool with installation control leaves a visible mark on the sleeve, as illustrated in Annex A 4 and B 4

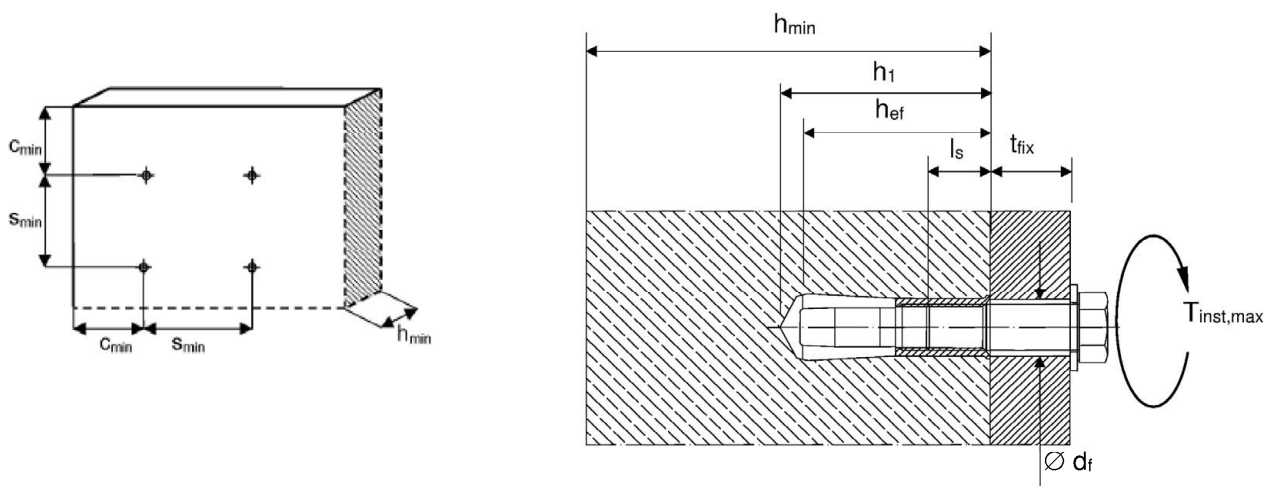
fischer drop-in anchor EA II

Intended Use
Specifications

Annex B 1

Table B2.1: Installation parameters for concrete C12/15 to C50/60

Anchor size (all versions)			M6		M8			M10			M12		M12D
Nominal drill hole diameter	d ₀	[mm]	8		10			12			15		16
Effective anchorage depth	h _{ef}	[mm]	25	30	25	30	40	25	30	40	25	50	50
Maximum installation torque	T _{inst,max}	[Nm]	4		8			15			35		
Minimum drill hole depth	h ₁	[mm]	27	32	27	33	43	27	33	43	27	54	54
Minimum screw-in depth	l _{s,min}	[mm]	6		8			10			12		
Maximum screw-in depth	l _{s,max}	[mm]	14		14			14	15	17	14	22	
Clearance hole diameter	∅ d _f ≤	[mm]	7		9			12			14		
h _{min} = 80 mm													
Minimum spacing	s _{min}	[mm]	30	70	70	110	200	80	200		100	-	-
Minimum edge distance	c _{min}	[mm]	60	150	100	150		120	150		130	-	-
h _{min} = 100 mm													
Minimum spacing	s _{min}	[mm]	30	65	50	70		60	90	150	100	200	
Minimum edge distance	c _{min}	[mm]	60	115	100	115		100	160	180	110		
h _{min} = 120 mm													
Minimum spacing	s _{min}	[mm]	30	65	50	70		60	85	95	100	145	
Minimum edge distance	c _{min}	[mm]	60	115	100	115		100	140	150	110	200	



Fastening screw or threaded rod:

- Minimum property class and materials according to table A3.1
- The length of the fastening screw or threaded rod shall be determined depending on thickness of fixture t_{fix} , admissible tolerances and maximum screw-in depth $l_{s,max}$ as well as minimum screw-in depth $l_{s,min}$.

(Fig. not to scale)

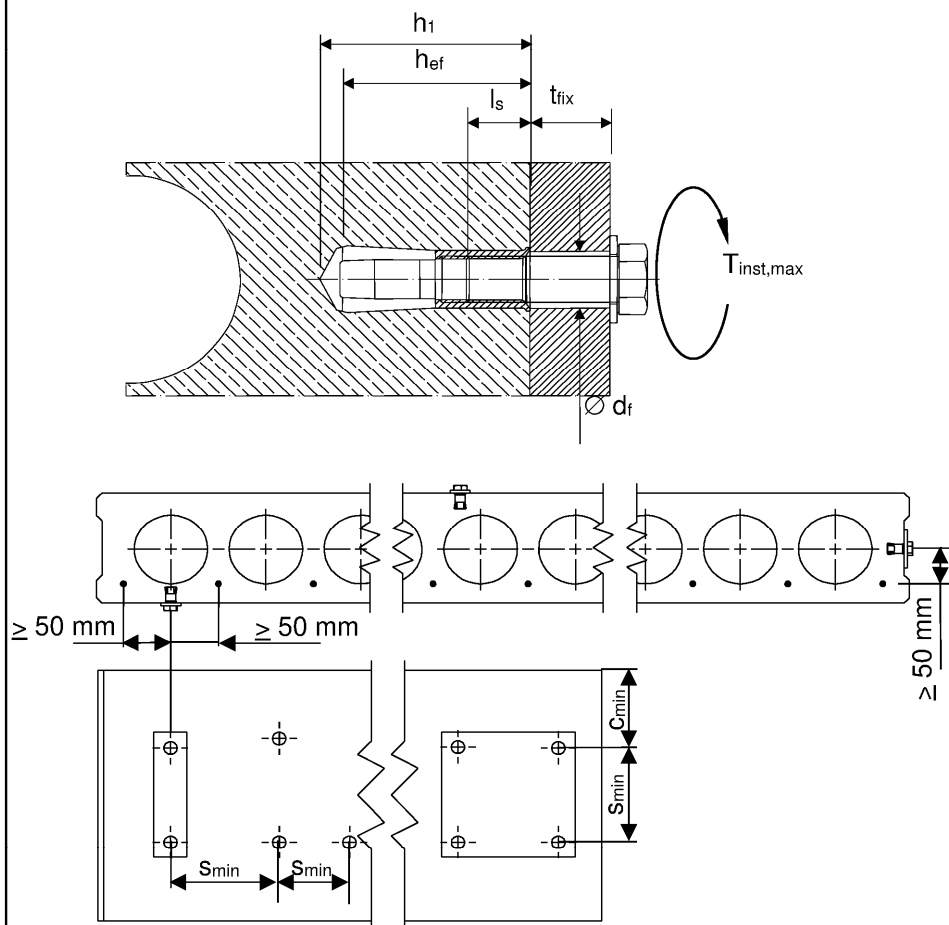
fischer drop-in anchor EA II

Intended Use
Installation parameters

Annex B 2

Table B3.1: Installation parameters for precast pre-stressed hollow concrete slabs

Anchor size (all versions)			M6	M8	M10	M12
Nominal drill hole diameter	d_0	[mm]	8	10	12	15
Effective anchorage depth	h_{ef}	[mm]	25			
Maximum installation torque	$T_{inst,max}$	[Nm]	4	8	15	35
Minimum drill hole depth	h_1	[mm]	27			
Minimum screw-in depth	$l_{s,min}$	[mm]	6	8	10	12
Maximum screw-in depth	$l_{s,max}$	[mm]	14			
Clearance hole diameter	$\varnothing d_f$	[mm]	7	9	12	14
Minimum spacing	$s_{min} = s_{cr}$	[mm]	200			
Minimum edge distance	$c_{min} = c_{cr}$	[mm]	150			



Fastening screw or threaded rod:

- Minimum property class and materials according to table A3.1
- The length of the fastening screw or threaded rod shall be determined depending on thickness of fixture t_{fix} , admissible tolerances and maximum screw-in depth $l_{s,max}$ as well as minimum screw-in depth $l_{s,min}$.

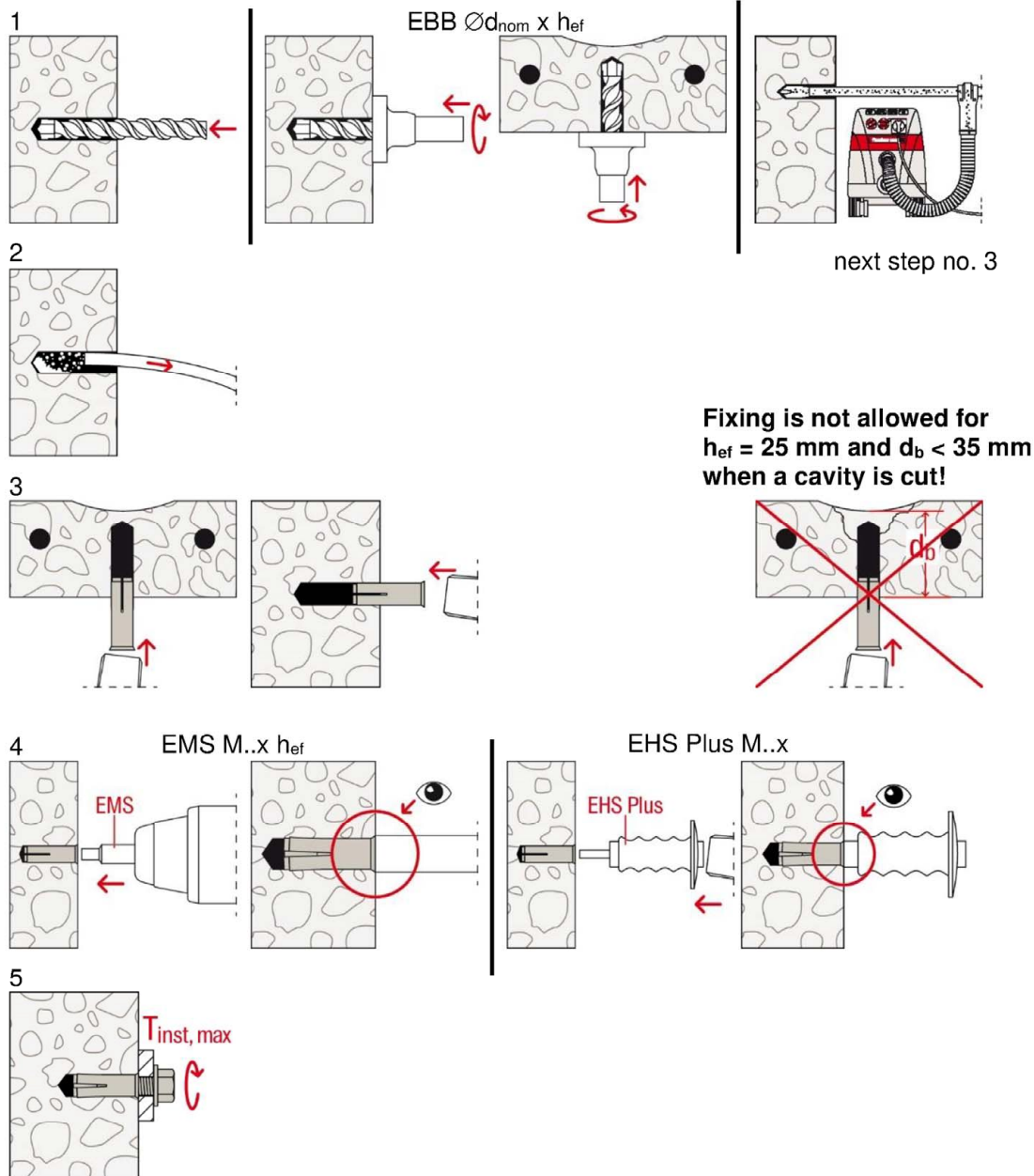
(Fig. not to scale)

fischer drop-in anchor EA II

Intended Use
Installation parameters

Annex B 3

Installation instructions



No.	Description
1	Create drill hole with hammer drill or stop drill or with hollow drill and vacuum cleaner
2	Clean from drill-dust
3	Set anchor till anchor is flush with surface of concrete
4	Expand the sleeve by driving the pin with the corresponding setting tool into the sleeve and control the correct setting
5	Fixation of fixture. Maximum installation torque $T_{inst, max}$ must not be exceeded

(Fig. not to scale)

fischer drop-in anchor EA II

Intended Use
Installation instructions

Annex B 4

Table C1.1: Characteristic resistance of a fixing point¹⁾ for all load directions

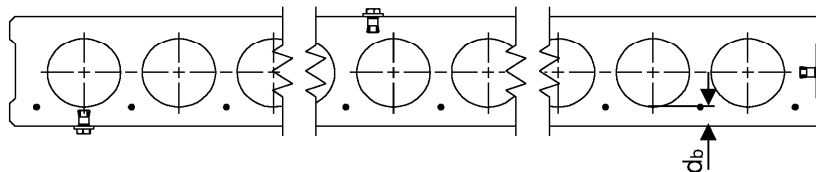
Anchor size		property class of the fastening screw or threaded rod	M6		M8			M10			M12/ M12D	
Effective anchorage depth h_{ef} [mm]			25	30	25	30	40	25	30	40	25	50
All load directions												
Characteristic resistance C12/15 F^0_{RK} [kN]	$\geq A4-50$ \geq steel 4.6	-2)	2	-2)	3	-2)	3	5	-2)	6		
		1,5		2		3			3			
Characteristic resistance C20/25 to C50/60 F^0_{RK} [kN]	$\geq A4-50$ \geq steel 4.6	-2)	3	-2)	5	-2)	5	7,5	-2)	9		
		2		3		4			4			
Installation factor γ_{inst} [-]		1,0	1,2	1,0	1,2	1,0	1,2	1,0	1,0			
Characteristic spacing s_{cr} [mm]		75	90	75	90	120	75	90	200	75	300	
Characteristic edge distance c_{cr} [mm]		38	45	38	45	60	38	45	100	38	150	
Steel failure with lever arm												
Characteristic resistance $M^0_{RK,s}$ [Nm]	A4-50	-2)	8	-2)	19	-2)	37	-2)	66			
Partial factor $\gamma_{Ms^{(3)}}$ [-]		2,38										
Characteristic resistance $M^0_{RK,s}$ [Nm]	A4-70	-2)	11	-2)	26	-2)	52	-2)	92			
Partial factor $\gamma_{Ms^{(3)}}$ [-]		1,56										
Characteristic resistance $M^0_{RK,s}$ [Nm]	A4-80	-2)	12	-2)	30	-2)	60	-2)	105			
Partial factor $\gamma_{Ms^{(3)}}$ [-]		1,33										
Characteristic resistance $M^0_{RK,s}$ [Nm]	steel 4.6	6,1		15		30		52				
Partial factor $\gamma_{Ms^{(3)}}$ [-]		1,67										
Characteristic resistance $M^0_{RK,s}$ [Nm]	steel 5.6	7,6		19		37		66				
Partial factor $\gamma_{Ms^{(3)}}$ [-]		1,67										
Characteristic resistance $M^0_{RK,s}$ [Nm]	steel 5.8	7,6		19		37		66				
Partial factor $\gamma_{Ms^{(3)}}$ [-]		1,25										
Characteristic resistance $M^0_{RK,s}$ [Nm]	steel 8.8	12		30		60		105				
Partial factor $\gamma_{Ms^{(3)}}$ [-]		1,25										
<div>1) For definition see EN 1992-4:2018, Picture 3.4</div> <div>2) No performance assessed</div> <div>3) In absence of other national regulations</div>												
fischer drop-in anchor EA II								Annex C 1				
Performances Characteristic values for tension loads in concrete according to design method B												

Table C2.1: Characteristic values for $h_{ef} = 25$ mm in precast pre-stressed hollow concrete slabs according to design method C with C30/37 to C50/60

Anchor size		property class of the fastening screw or threaded rod	M6	M8	M10	M12
Effective anchorage depth	h_{ef} [mm]		25			
All Load directions			galvanised steel; with rim			
Flange thickness	d_b [mm]		≥ 35 (or 30 ¹⁾)			
Characteristic resistance C30/37 to C50/60	F^0_{RK} [kN]		2	3	4	
Installation factor	γ_{inst} [-]		1,0			
Characteristic spacing	$s_{\text{cr}} = s_{\text{min}}$ [mm]		200			
Characteristic edge distance	$c_{\text{cr}} = c_{\text{min}}$ [mm]		150			
Steel failure with lever arm						
Characteristic resistance	$M^0_{\text{RK,s}}$ [Nm]	steel 4.6	6,1	15	30	52
Partial factor	$\gamma_{\text{Ms}^{(2)}}$ [-]		1,67			
Characteristic resistance	$M^0_{\text{RK,s}}$ [Nm]	steel 5.6	7,6	19	37	66
Partial factor	$\gamma_{\text{Ms}^{(2)}}$ [-]		1,67			
Characteristic resistance	$M^0_{\text{RK,s}}$ [Nm]	steel 5.8	7,6	19	37	66
Partial factor	$\gamma_{\text{Ms}^{(2)}}$ [-]		1,25			
Characteristic resistance	$M^0_{\text{RK,s}}$ [Nm]	steel 8.8	12	30	60	105
Partial factor	$\gamma_{\text{Ms}^{(2)}}$ [-]		1,25			

¹⁾ The anchor may be used in a flange thickness d_b of minimum 30 mm with the same characteristic resistance, but the drill hole is not allowed to cut a cavity (see Annex B 4 Point 3). The use of the fischer stop drill EBB is recommended

²⁾ In absence of other national regulations



(Fig. not to scale)

fischer drop-in anchor EA II

Performances

Characteristic values for tension loads in hollow core slabs according to design method C with C30/37 to C50/60

Annex C 2

Table C3.1: Characteristic resistance under fire exposure³⁾ in concrete C20/25 to C50/60

fire resistance class	EA II	property class of the fastening screw or threaded rod	M6x25	M6x30	M8x25	M8x30	M8x40	M10x25	M10x30	M10x40	M12x25	M12x50/ M12x50D
All load directions												
R 30	Characteristic resistance C20/25 to C50/60	steel ≥ 4.6 or ≥ A4-50 ²⁾	0,5	0,6	0,9	1,3	0,6	0,9	1,8	0,6	2,3	
R 60			0,5	0,6	0,9	1,5						
R 90			0,4	0,6			0,9		2,0			
R 120			0,3	0,5			0,6		0,5	1,3		
R 30 – R 120	Characteristic spacing s _{cr,fi} [mm]		100	120	100	120	160	100	120	160	100	200
	Characteristic edge distance c _{cr,fi} [mm]		50	115	50	140	140	50	140	160	50	

¹⁾ In absence of other national regulations, a partial factor for the resistance of $\gamma_{m,fi} = 1,0$ under fire impact is recommended.

²⁾ Not for M..x25

³⁾ Not valid for precast pre-stressed hollow core slabs

Table C3.2: Characteristic resistance under fire exposure³⁾ for shear load with level arm in concrete C20/25 to C50/60

fire resistance class	EA II	property class of the fastening screw or threaded rod	M6x25	M6x30	M8x25	M8x30	M8x40	M10x25	M10x30	M10x40	M12x25	M12x50/ M12x50D
R 30	Characteristic resistance $M_{Rk,s,fi}^{1)}$ [Nm]	steel ≥ 4.6 or $\geq A4-5^{2)}$	0,65	0,5	1,30	1,7	1,7	2,4	4,4	4,4	7,1	9,5
R 60			0,50	0,4	0,95	1,3	1,3	1,7	3,2	3,2	5,0	6,7
R 90			0,35	0,3	0,60	0,8	0,8	1,0	1,9	1,9	2,9	3,9
R 120			0,30	0,2	0,45	0,6	0,6	0,7	1,3	1,3	1,8	2,4

¹⁾ In absence of other national regulations, a partial factor for the resistance of $\gamma_{m,fi} = 1,0$ under fire impact is recommended.

²⁾ Not for M..x25

³⁾ Not valid for precast pre-stressed hollow core slabs

In case of fire attack from more than one side, the edge distance shall be $c_{fi,min} \geq 300$ mm

fischer drop-in anchor EA II

Performances
Characteristic loads for fire resistances

Annex C 3