

Approval body for construction products
and types of construction

Bautechnisches Prüfamt

An institution established by the Federal and
Laender Governments



European Technical Assessment

ETA-18/0274
of 12 October 2021

English translation prepared by DIBt - Original version in German language

General Part

Technical Assessment Body issuing the
European Technical Assessment:

Deutsches Institut für Bautechnik

Trade name of the construction product

Mapei Injection system Mapefix UM Hybrid
for rebar connection

Product family
to which the construction product belongs

Systems for post-installed
rebar connections with mortar

Manufacturer

Mapei S.p.A.
Via Cafiero, 22
20158 MILANO (Italy)
ITALIEN

Manufacturing plant

Mapei S.p.A., Plant1 Germany

This European Technical Assessment
contains

23 pages including 3 annexes which form an integral part
of this assessment

This European Technical Assessment is
issued in accordance with Regulation (EU)
No 305/2011, on the basis of

EAD 330087-01-0601, Edition 06/2021

This version replaces

ETA-18/0274 issued on 12 July 2018

European Technical Assessment

ETA-18/0274

English translation prepared by DIBt

Page 2 of 23 | 12 October 2021

The European Technical Assessment is issued by the Technical Assessment Body in its official language. Translations of this European Technical Assessment in other languages shall fully correspond to the original issued document and shall be identified as such.

Communication of this European Technical Assessment, including transmission by electronic means, shall be in full. However, partial reproduction may only be made with the written consent of the issuing Technical Assessment Body. Any partial reproduction shall be identified as such.

This European Technical Assessment may be withdrawn by the issuing Technical Assessment Body, in particular pursuant to information by the Commission in accordance with Article 25(3) of Regulation (EU) No 305/2011.

Specific Part**1 Technical description of the product**

The subject of this European Technical Assessment is the post-installed connection, by anchoring or overlap connection joint, of reinforcing bars (rebars) in existing structures made of normal weight concrete, using the "Mapei Injection system Mapefix UM Hybrid for rebar connection" in accordance with the regulations for reinforced concrete construction.

Reinforcing bars made of steel with a diameter ϕ from 8 to 32 mm or the tension anchor ZA from sizes M12 to M24 according to Annex A and injection mortar Mapefix UM Hybrid are used for rebar connections. The rebar is placed into a drilled hole filled with injection mortar and is anchored via the bond between rebar, injection mortar and concrete.

The product description is given in Annex A.

2 Specification of the intended use in accordance with the applicable European assessment Document

The performances given in Section 3 are only valid if the anchor is used in compliance with the specifications and conditions given in Annex B.

The verifications and assessment methods on which this European Technical Assessment is based lead to the assumption of a working life of the rebar connections of at least 50 and/or 100 years. The indications given on the working life cannot be interpreted as a guarantee given by the producer, but are to be regarded only as a means for choosing the right products in relation to the expected economically reasonable working life of the works.

3 Performance of the product and references to the methods used for its assessment**3.1 Mechanical resistance and stability (BWR 1)**

Essential characteristic	Performance
Characteristic resistance under static and quasi-static loading	See Annex C 1
Characteristic resistance under seismic loading	See Annex B 4 and C 2

3.2 Safety in case of fire (BWR 2)

Essential characteristic	Performance
Reaction to fire	Class A1
Resistance to fire	See Annex C 3 and C 4

4 Assessment and verification of constancy of performance (AVCP) system applied, with reference to its legal base

In accordance with European Assessment Document EAD No. 330087-01-0601, the applicable European legal act is: [96/582/EC].

The system to be applied is: 1

5 Technical details necessary for the implementation of the AVCP system, as provided for in the applicable European Assessment Document

Technical details necessary for the implementation of the AVCP system are laid down in the control plan deposited with Deutsches Institut für Bautechnik.

Issued in Berlin on 12 October 2021 by Deutsches Institut für Bautechnik

Dipl.-Ing. Beatrix Wittstock
Head of Section

beglaubigt:
Baderschneider

Installation post installed rebar

Figure A1: Overlapping joint for rebar connections of slabs and beams

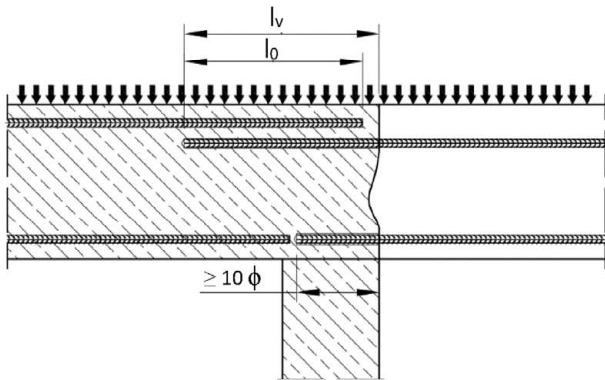


Figure A2: Overlapping joint at a foundation of a wall or column where the rebars are stressed in tension

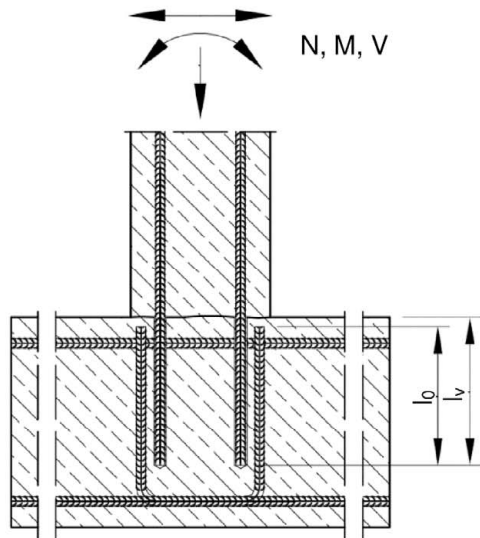


Figure A3: End anchoring of slabs or beams (e.g. designed as simply supported)

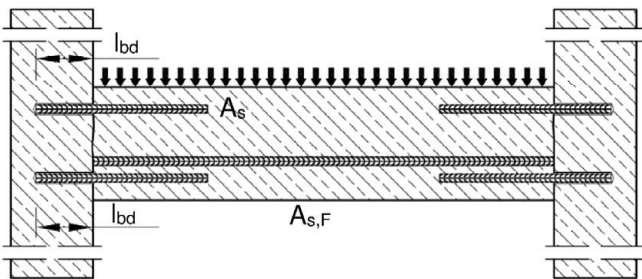


Figure A4: Rebar connection for components stressed primarily in compression. The rebars are stressed in compression

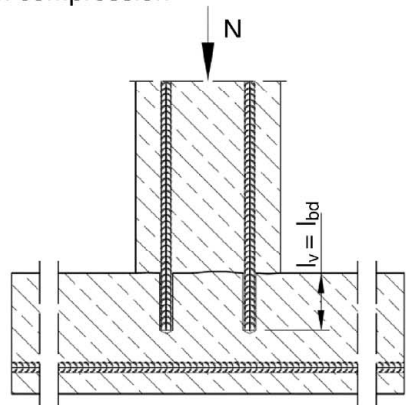
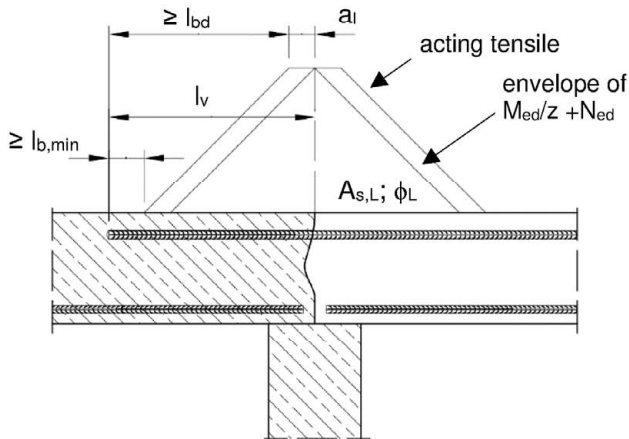


Figure A5: Anchoring of reinforcement to cover the line of acting tensile force



Note to Figure A1 to A5:

In the Figures no transverse reinforcement is plotted, the transverse reinforcement shall comply with EN 1992-1-1:2004+AC:2010.

Preparing of joints according to Annex B 2

Mapei Injection system Mapefix UM Hybrid for rebar connection

Product description

Installed condition and examples of use for rebars

Annex A 1

Installation tension anchor ZA

Figure A6: Overlapping joint of a column stressed in bending to a foundation

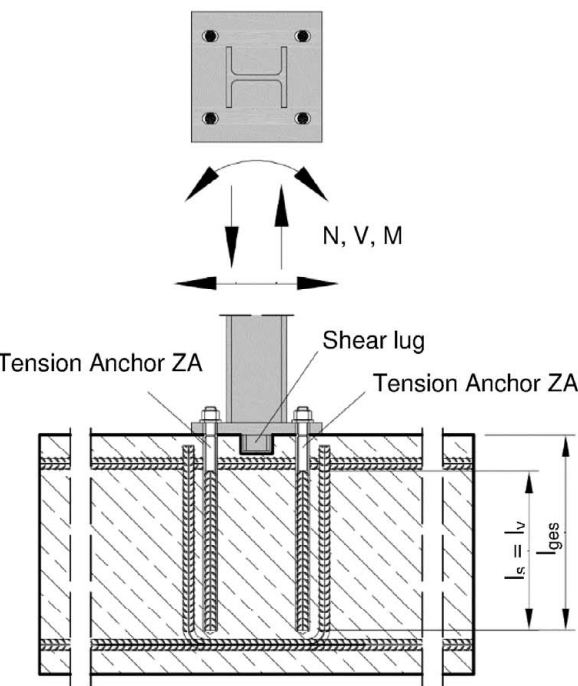


Figure A7: Overlap joint for the anchorage of barrier posts

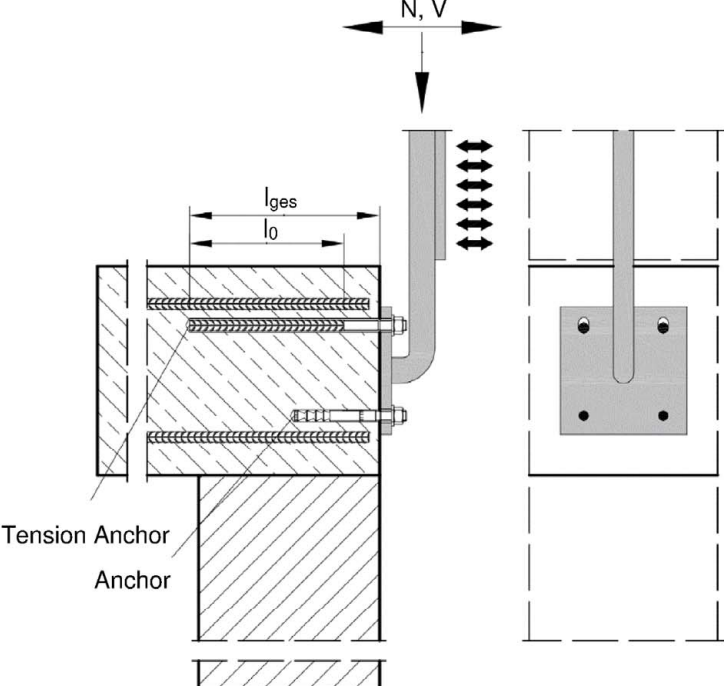
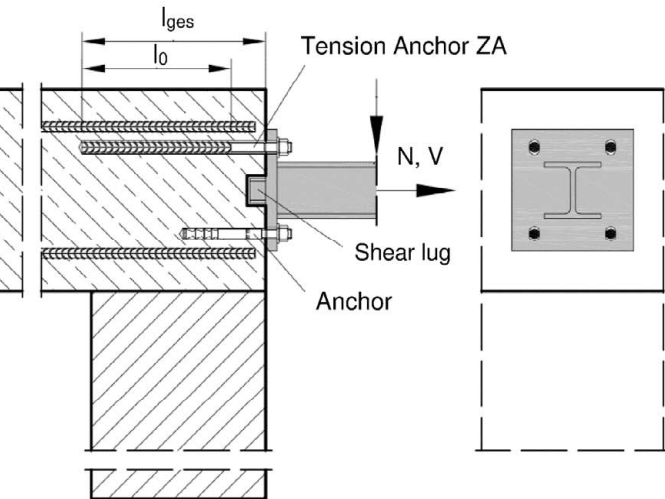


Figure A8: Overlap joint for the anchorage to cantilever members



Note to Figure A6 to A8:

In the Figures no transverse reinforcement is plotted, the transverse reinforcement shall comply with EN 1992-1-1:2002+AC:2010

Mapei Injection system Mapefix UM Hybrid for rebar connection

Product description
Installed condition and examples of use for tension anchors ZA

Annex A 2

Mapei Injection system Mapefix UM Hybrid:

Injection mortar: Mapefix UM Hybrid

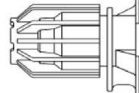
Type "coaxial": 150 ml, 280 ml,
300 ml up to 333 ml and
380 ml up to 420 ml cartridge



Imprint: Mapefix UM Hybrid, processing notes,
charge-code, shelf life, hazard-code, curing-
and processing time (depending on the
temperature), optional with travel scale

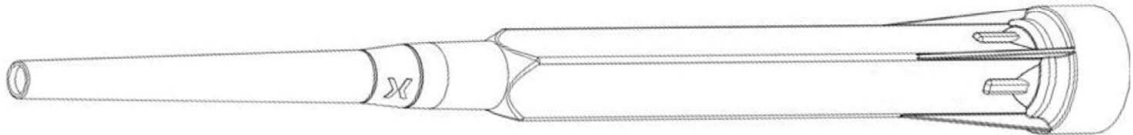
Type "side-by-side":

235 ml, 345 ml up to 360 ml and 825 ml
cartridge

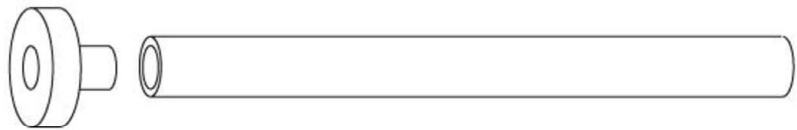


Imprint: Mapefix UM Hybrid, processing notes,
charge-code, shelf life, hazard-code, curing-
and processing time (depending on the
temperature), optional with travel scale

Static Mixer PM-19E



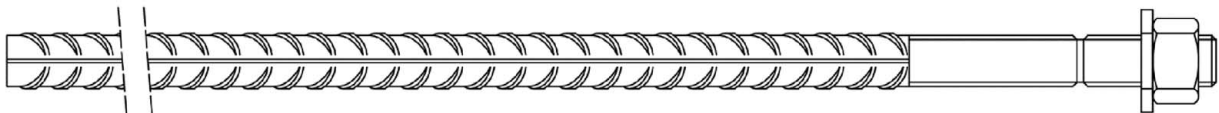
Piston plug VS and
mixer extension



Reinforcing bar (rebar): ø8 to ø32



Tension Anchor ZA: M12 to M24



Mapei Injection system Mapefix UM Hybrid for rebar connection

Product description

Injection mortar / Static mixer / Rebar / Tension Anchor ZA

Annex A 3

Reinforcing bar (rebar): $\varnothing 8$, $\varnothing 10$, $\varnothing 12$, $\varnothing 14$, $\varnothing 16$, $\varnothing 20$, $\varnothing 22$, $\varnothing 24$, $\varnothing 25$, $\varnothing 28$, $\varnothing 32$




- Minimum value of related rip area $f_{R,min}$ according to EN 1992-1-1:2004+AC:2010
- Rib height of the bar shall be in the range $0,05\phi \leq h_{rib} \leq 0,07\phi$
(ϕ : Nominal diameter of the bar; h_{rib} : Rib height of the bar)


Table A1: Materials

Designation	Material
Rebar EN 1992-1-1:2004+AC:2010, Annex C	Bars and de-coiled rods class B or C f_{yk} and k according to NDP or NCL of EN 1992-1-1/NA $f_{uk} = f_{tk} = k \cdot f_{yk}$
<p>Mapei Injection system Mapefix UM Hybrid for rebar connection</p> <p>Product description Specifications Rebar</p>	

Annex A 4

Tension Anchor ZA: M12, M16, M20, M24

Marking: e.g.  12 A4

-  Mark of the producer
ZA Trade name
12 Rod diameter/thread
A4 for stainless steel A4
HCR for high corrosion resistance steel

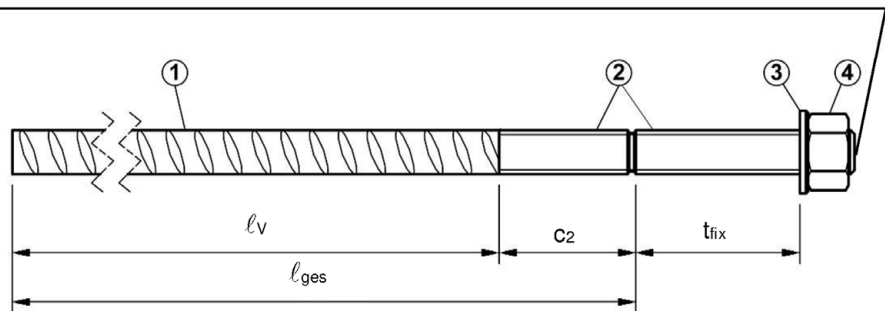


Table A2: Materials

Part	Designation	Material											
		ZA vz				ZA A4				ZA HCR			
		M12	M16	M20	M24	M12	M16	M20	M24	M12	M16	M20	M24
1	Reinforcement bar	Class B according to NDP or NCL of EN 1992-1-1/NA $f_{uk} = f_{tk} = k \cdot f_{yk}$											
	f_{yk} [N/mm ²]	500				500				500			
2	Threaded rod	Steel, zinc plated according to EN ISO 683-4:2018 or EN 10263:2001				Stainless steel, 1.4362, 1.4401, 1.4404, 1.4571, EN 10088-1:2014				High corrosion resistant steel, 1.4529, 1.4565, EN 10088-1:2014			
3	Washer	Steel, zinc plated according to EN ISO 683-4:2018 or EN 10263:2001				Stainless steel, 1.4362, 1.4401, 1.4404, 1.4571, EN 10088-1:2014				High corrosion resistant steel, 1.4529, 1.4565, EN 10088-1:2014			
4	Nut												

Table A3: Dimensions and installation parameter

Size			ZA-M12	ZA-M16	ZA-M20	ZA-M24
Diameter of threaded rod	d_s	[mm]	12	16	20	24
Diameter of reinforcement bar	ϕ	[mm]	12	16	20	25
Drill hole diameter	d_o	[mm]	16	20	25	32
Diameter of clearance hole in fixture	d_i	[mm]	14	18	22	26
With across nut flats	SW	[mm]	19	24	30	36
Stress area	A_s	[mm ²]	84	157	245	353
Effective embedment depth	l_v	[mm]	according to static calculation			
Length of bonded thread	plated	c_2	[mm]	≥ 20	≥ 20	≥ 20
	A4/HCR			≥ 100	≥ 100	≥ 100
Minimum thickness of fixture	t_{fix}	[mm]	5	5	5	5
Maximum thickness of fixture	t_{fix}	[mm]	3000	3000	3000	3000
Maximum installation torque	T_{max}	[Nm]	50	100	150	150

Mapei Injection system Mapefix UM Hybrid for rebar connection

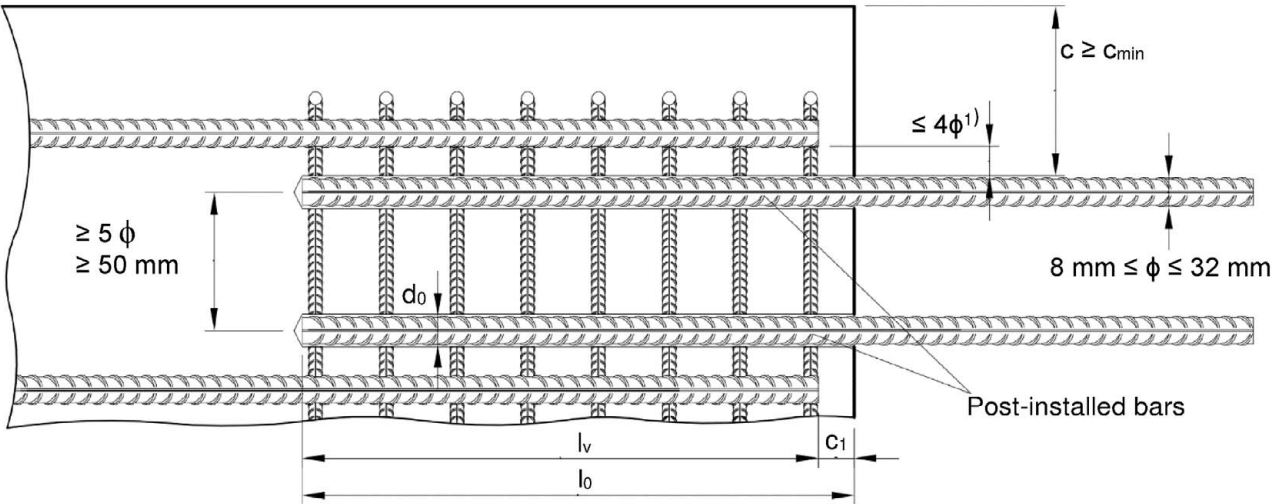
Product description
Specifications Tension Anchor ZA

Annex A 5

Specifications of intended use			
Anchorage subject to:		static and quasi-static loads	seismic action
Hammer drilling (HD), Hammer drilling with hollow drill bit (HDB) or compressed air drilling (CD)	for a working life of 50 years	Ø8 to Ø32 ZA-M12 to ZA-M24	Ø10 to Ø32
	for a working life of 100 years	Ø8 to Ø32 ZA-M12 to ZA-M24	Ø10 to Ø32
	Fire exposure	Ø8 to Ø32 ZA-M12 to ZA-M24	No performance assessed
Temperature Range:	- 40°C to +80°C (max long-term temperature +50 °C and max short-term temperature +80 °C)		
Base materials: <ul style="list-style-type: none">• Reinforced or unreinforced normal weight concrete according to EN 206:2013 + A1:2016.• Strength classes C12/15 to C50/60 according to EN 206:2013 + A1:2016.• Maximum chloride content of 0,40% (CL 0.40) related to the cement content according to EN 206:2013 + A1:2016.• Non-carbonated concrete. <p>Note: In case of a carbonated surface of the existing concrete structure the carbonated layer shall be removed in the area of the post-installed rebar connection with a diameter of $\phi + 60$ mm prior to the installation of the new rebar.</p> <p>The depth of concrete to be removed shall correspond to at least the minimum concrete cover in accordance with EN 1992-1-1:2004+AC:2010. The foregoing may be neglected if building components are new and not carbonated and if building components are in dry conditions.</p>			
Use conditions (Environmental conditions) with tension anchor ZA: <ul style="list-style-type: none">• Structures subject to dry internal conditions (all materials).• For all other conditions according to EN 1993-1-4:2006+A1:2015 corresponding to corrosion resistance class:<ul style="list-style-type: none">- Stainless steel Stahl A4 according to Annex A 4, Table A1: CRC III- High corrosion resistance steel HCR according to Annex A 4, Table A1: CRC V			
Design: <ul style="list-style-type: none">• Anchorages are designed under the responsibility of an engineer experienced in anchorages and concrete work.• Verifiable calculation notes and drawings are prepared taking account of the forces to be transmitted.• Design according to EN 1992-1-1:2004+AC:2010, EN 1992-1-2:2004+AC:2008 and Annex B 2 and B 3.• The actual position of the reinforcement in the existing structure shall be determined on the basis of the construction documentation and taken into account when designing.			
Installation: <ul style="list-style-type: none">• Dry or wet concrete. It must not be installed in flooded holes.• Overhead installation allowed.• Hole drilling by hammer drill (HD), hollow drill (HDB) or compressed air drill mode (CD).• The installation of post-installed rebar resp. tension anchors shall be done only by suitable trained installer and under supervision on site; the conditions under which an installer may be considered as suitable trained and the conditions for supervision on site are up to the Member States in which the installation is done.• Check the position of the existing rebars (if the position of existing rebars is not known, it shall be determined using a rebar detector suitable for this purpose as well as on the basis of the construction documentation and then marked on the building component for the overlap joint).			
Mapei Injection system Mapefix UM Hybrid for rebar connection			Annex B 1
Intended use Specifications			

Figure B1: General construction rules for post-installed rebars

- Only tension forces in the axis of the rebar may be transmitted.
- The transfer of shear forces between new concrete and existing structure shall be designed additionally according to EN 1992-1-1:2004+AC:2010.
- The joints for concreting must be roughened to at least such an extent that aggregate protrude.



- 1) If the clear distance between lapped bars exceeds 4ϕ , then the lap length shall be increased by the difference between the clear bar distance and 4ϕ .

The following applies to Figure B1:

c	concrete cover of post-installed rebar
c ₁	concrete cover at end-face of existing rebar
c _{min}	minimum concrete cover according to Table B1 and to EN 1992-1-1:2004+AC:2010, Section 4.4.1.2
φ	diameter of post-installed rebar
l ₀	lap length, according to EN 1992-1-1:2004+AC:2010, Section 8.7.3
l _v	effective embedment depth, $\geq l_0 + c_1$
d ₀	nominal drill bit diameter, see Annex B 5

Mapei Injection system Mapefix UM Hybrid for rebar connection

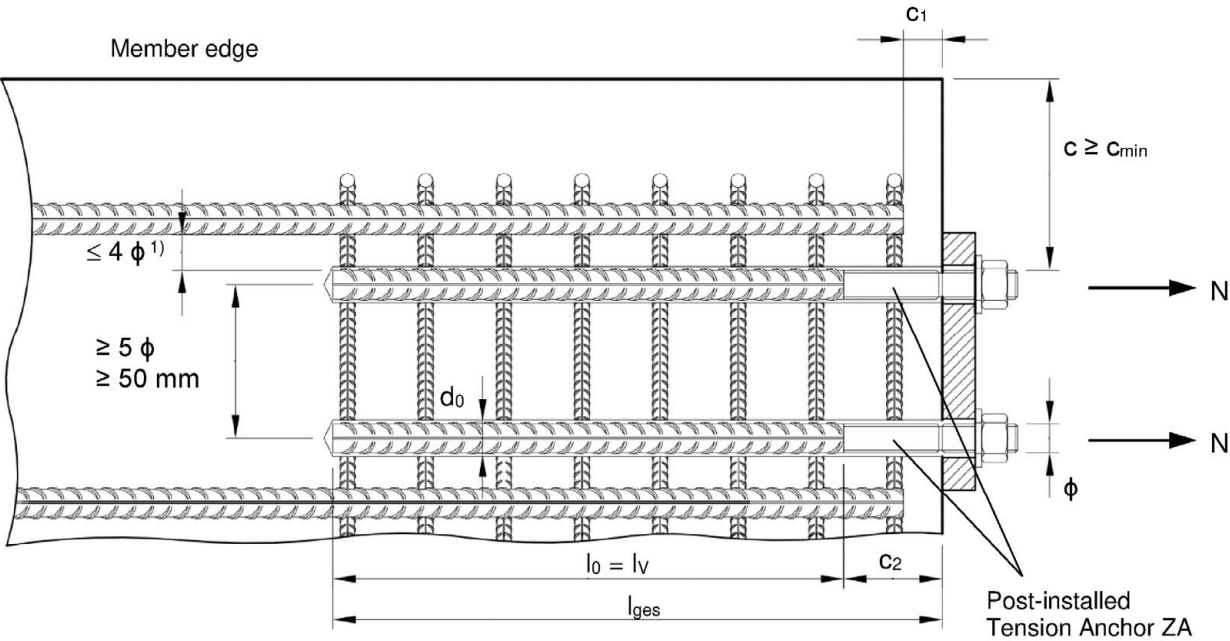
Intended use

General construction rules for post-installed rebars

Annex B 2

Figure B2: General construction rules for tension anchors ZA

- The length of the bonded-in thread may not be accounted as anchorage.
- Only tension forces in the direction of the bar axis may be transmitted by the tension anchor ZA.
- The tension force must be transferred via an overlap joint to the reinforcement in the building part.
- The transfer of shear forces shall be ensured by appropriate additional measures, e.g. shear lugs or by anchors with an European technical assessment.
- In the anchor plate, the holes for the tension anchors shall be executed as elongated holes with axis in the direction of the shear force.



- 1) If the clear distance between lapped bars exceeds 4ϕ , then the lap length shall be increased by the difference between the clear bar distance and 4ϕ .

The following applies to Figure B2:

c	concrete cover of tension anchor ZA
c_1	concrete cover at end-face of existing rebar
c_2	Length of bonded thread
c_{min}	minimum concrete cover according to Table B1 and to EN 1992-1-1:2004+AC:2010, Section 4.4.1.2
ϕ	diameter of tension anchor
l_0	lap length, according to EN 1992-1-1:2004+AC:2010, Section 8.7.3
l_v	effective embedment depth, $\geq l_0 + c_1$
l_{ges}	overall embedment depth, $\geq l_0 + c_2$
d_0	nominal drill bit diameter, see Annex B 4

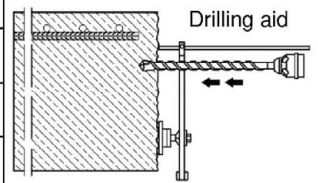
Mapei Injection system Mapefix UM Hybrid for rebar connection

Intended use
General construction rules for tension anchors

Annex B 3

Table B1: Minimum concrete cover min c^1 of post-installed rebar depending of drilling method

Drilling method	Rebar diameter	Without drilling aid	With drilling aid
Hammer drilling (HD) Hammer drilling with hollow drill (HDB)	< 25 mm	$30 \text{ mm} + 0,06 \cdot l_v \geq 2 \phi$	$30 \text{ mm} + 0,02 \cdot l_v \geq 2 \phi$
	$\geq 25 \text{ mm}$	$40 \text{ mm} + 0,06 \cdot l_v \geq 2 \phi$	$40 \text{ mm} + 0,02 \cdot l_v \geq 2 \phi$
Compressed air drilling (CD)	< 25 mm	$50 \text{ mm} + 0,08 \cdot l_v$	$50 \text{ mm} + 0,02 \cdot l_v$
	$\geq 25 \text{ mm}$	$60 \text{ mm} + 0,08 \cdot l_v \geq 2 \phi$	$60 \text{ mm} + 0,02 \cdot l_v \geq 2 \phi$



¹⁾ see Annex B 2, Figure B1 and Annex B 3, Figure B2

Comments: The minimum concrete cover acc. EN 1992-1-1:2004+AC:2010 must be observed.
For minimum concrete cover $c_{\min, \text{seis}}$ in case of seismic action see Table B2.

Table B2: Minimum concrete cover min $c_{\min, \text{seis}}$

Drilling method	Design condition	Distance of 1 st edge	Distance of 2 nd edge
Hammer drilling (HD) Hollow drill bit system (HDB) Compressed air drilling (CD)	Edge	$\geq 2 \phi$	$\geq 2 \phi$
	Corner	$\geq 2 \phi$	$\geq 2 \phi$

Table B3: Base material temperature, gelling time and curing time

Temperature in base material	Maximum working time ¹⁾	Minimum curing time in dry concrete	Minimum curing time in wet concrete
	t_{gel}	t_{cure}	t_{cure}
- 5 °C to - 1 °C	50 min	5 h	10 h
0 °C to + 4 °C	25 min	3,5 h	7 h
+ 5 °C to + 9 °C	15 min	2 h	4 h
+ 10 °C to + 14 °C	10 min	1 h	2 h
+ 15 °C to + 19 °C	6 min	40 min	80 min
+ 20 °C to + 29 °C	3 min	30 min	60 min
+ 30 °C to + 40 °C	2 min	30 min	60 min
Cartridge temperature	+5°C to +40°C		










¹⁾ t_{gel} : maximum time from starting of mortar injection to completing of rebar setting.

Mapei Injection system Mapefix UM Hybrid for rebar connection

Intended use
Minimum concrete cover
Gelling and curing time

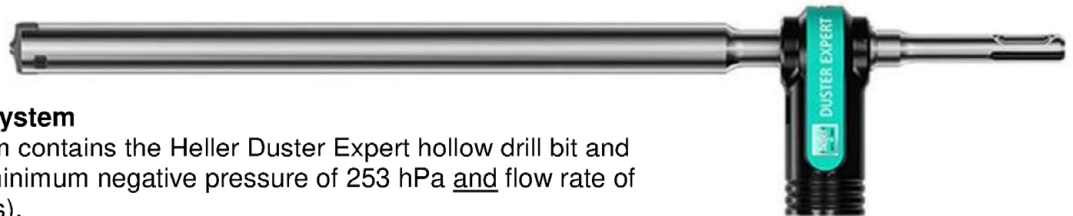
Annex B 4

Table B4: Dispensing tools

Cartridge type/size	Hand tool		Pneumatic tool
Coaxial cartridges 150, 280, 300 up to 333 ml	 e.g. Type H 297 or H244C		 e.g. Type TS 492 X
Coaxial cartridges 380 up to 420 ml	 e.g. Type CCM 380/10	 e.g. Type H 285 or H244C	 e.g. Type TS 485 LX
Side-by-side cartridges 235, 345 ml	 e.g. Type CBM 330A	 e.g. Type H 260	 e.g. Type TS 477 LX
Side-by-side cartridge 825 ml	-	-	 e.g. Type TS 498X

All cartridges could also be extruded by a battery tool.

Cleaning and installation tools



HDB – Hollow drill bit system

The hollow drill bit system contains the Heller Duster Expert hollow drill bit and a class M vacuum with minimum negative pressure of 253 hPa and flow rate of minimum 150 m³/h (42 l/s).

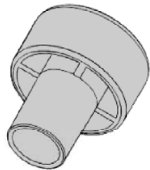
Brush RB:



SDS Plus Adapter:



Brush extension:



Piston Plug VS



Hand pump (volume 750 ml)



Rec. compressed air tool
hand slide valve (min 6 bar)

Mapei Injection system Mapefix UM Hybrid for rebar connection

Intended Use

Dispensing, cleaning and installation tools

Annex B 5

Table B5: Brushes, piston plugs, max anchorage depth and mixer extension, hammer (HD) and compressed air (CD) drilling

Bar size ϕ	Tension anchor ϕ	Drill bit - Ø		d _b Brush - Ø	d _{b,min} min. Brush - Ø	Piston plug	Cartridge: All sizes				Cartridge: 825 ml						
		HD	CD				Hand or battery tool		Pneumatic tool		Pneumatic tool						
							l _{v,max}	Mixer extension	l _{v,max}	Mixer extension	l _{v,max}	Mixer extension					
[mm]	[mm]	[mm]		[mm]	[mm]		[mm]		[mm]		[mm]						
8	-	10	-	RB10	11,5	10,5	-	250	VL10/0,75 or VL16/1,8	250	VL10/0,75 or VL16/1,8	250	VL10/0,75 or VL16/1,8				
	-	12	-	RB12	13,5	12,5	-	700		800		800					
10	-							14		-		RB14		15,5	14,5	VS14	250
	-	700	1000	1000													
12	ZA-M12	16	-	RB16	17,5	16,5	VS16	250		250		250					
14	-							18		RB18		20,0	18,5	VS18	1200	VL16/1,8	
16	ZA-M16	20	RB20	22,0	20,5	VS20	700	1000		VL10/0,75 or VL16/1,8		1400					
20	ZA-M20	25	-	RB25	27,0	25,5						VS25	1600				
24/25	ZA-M24	-	26	RB26	28,0	26,5	VS25	500		VL10/0,75 or VL16/1,8		700	2000	VL16/1,8			
		22	-	28	RB28	30,0	28,5								VS28		
		30	-	30	RB30	32,0	30,5		VS30								
											32	RB32			34,0	32,5	VS32
32	-	40	RB40	43,5	40,5	VS40		500									

Table B6: Brushes, piston plugs, max anchorage depth and mixer extension, hammer drilling with hollow drill bit system (HDB)

Bar size Φ	Tension anchor Φ	Drill bit - Ø	d _b Brush - Ø	d _{b,min} min. Brush - Ø	Piston plug	Cartridge: All sizes				Cartridge: 825 ml	
		HDB				Hand or battery tool		Pneumatic tool		Pneumatic tool	
						l _{v,max}	Mixer extension	l _{v,max}	Mixer extension	l _{v,max}	Mixer extension
[mm]	[mm]	[mm]	No cleaning required			[mm]		[mm]		[mm]	
8	-	10			-	250		250		250	VL10/0,75 or VL16/1,8
	-	12				700		800		800	
	-					250		250		250	
10	-	14			VS14	700	1000	1000			
	-					250	250	250			
12	ZA-M12	16			VS16	700	VL10/0,75 or VL16/1,8	1000	VL10/0,75 or VL16/1,8	1000	VL16/1,8
		18			VS18						
16	ZA-M16	20			VS20						
20	ZA-M20	25			VS25	500	700				
22	-	28			VS28						
24/25	ZA-M24	30			VS30		500				
		32			VS32						
		35			VS35						
28	-	35			VS40						
32	-	40									

Mapei Injection system Mapefix UM Hybrid for rebar connection

Intended Use

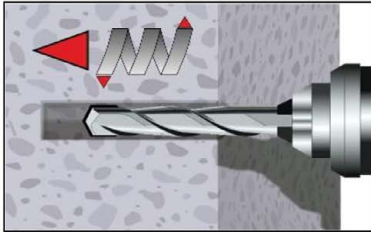
Parameter brushes, piston plugs, max anchorage depth and mixer extension

Annex B 6

A) Bore hole drilling

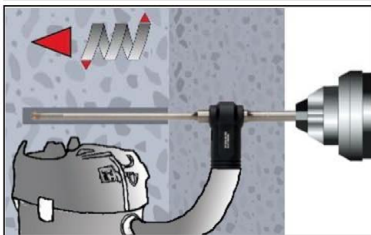
Note: Before drilling, remove carbonated concrete and clean contact areas (see Annex B1)

In case of aborted drill hole: the drill hole shall be filled with mortar.



1a. Hammer (HD) or compressed air drilling (CD)

Drill a hole into the base material to the size and embedment depth required by the selected reinforcing bar. Proceed with Step B (MAC or CAC).

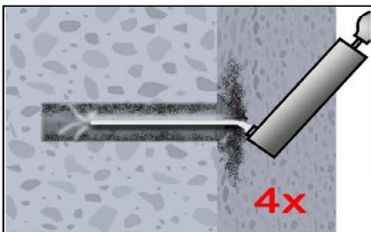


1b. Hollow drill bit system (HDB) (see Annex B 5)

Drill a hole into the base material to the size and embedment depth required by the selected reinforcing bar. This drilling system removes the dust and cleans the bore hole during drilling. Proceed with Step C.

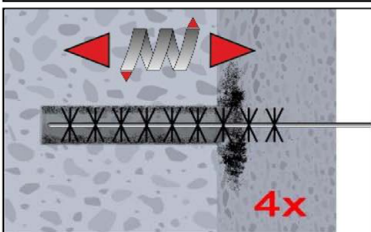
B) Bore hole cleaning (MAC or CAC)

MAC: Cleaning for bore hole diameter $d_0 \leq 20\text{mm}$ and bore hole depth $h_0 \leq 10d_s$

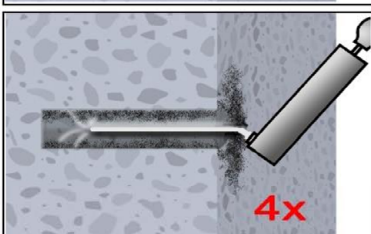


Attention! Standing water in the bore hole must be removed before cleaning.

2a. Starting from the bottom or back of the bore hole, blow the hole clean with a hand pump (Annex B 5) a minimum of four times. If the bore hole ground is not reached an extension shall be used.



2b. Check brush diameter (Table B5). Brush the hole with an appropriate sized wire brush $> d_{b,min}$ (Table B5) a minimum of four times in a twisting motion. If the bore hole ground is not reached with the brush, a brush extension shall be used.



2c. Finally blow the hole clean again with a hand pump (Annex B 5) a minimum of four times. If the bore hole ground is not reached an extension shall be used.

Mapei Injection system Mapefix UM Hybrid for rebar connection

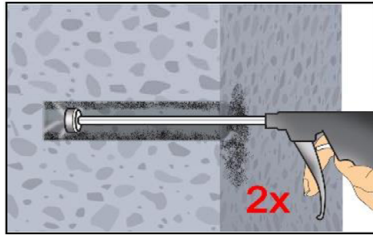
Intended Use

Installation instruction:

Bore hole drilling (HD, HDB and CD)
Bore hole cleaning

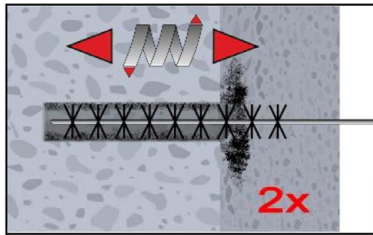
Annex B 7

CAC: Cleaning for all bore hole diameter and bore hole depth with drilling method HD and CD

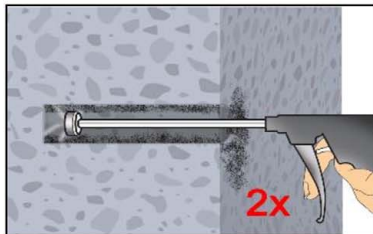


Attention! Standing water in the bore hole must be removed before cleaning.

2a. Starting from the bottom or back of the bore hole, blow the hole clean with compressed air (min. 6 bar) (Annex B 5) a minimum of two times until return air stream is free of noticeable dust. If the bore hole ground is not reached an extension shall be used



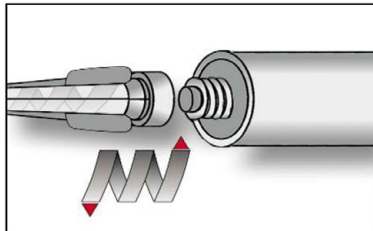
2b. Check brush diameter (Table B5). Brush the hole with an appropriate sized wire brush $> d_{b,min}$ (Table B5) a minimum of two times in a twisting motion. If the bore hole ground is not reached with the brush, a brush extension shall be used.



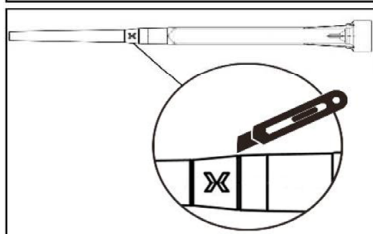
2c. Finally blow the hole clean again with compressed air (min. 6 bar) (Annex B 5) a minimum of two times until return air stream is free of noticeable dust. If the bore hole ground is not reached an extension shall be used.

After cleaning, the bore hole has to be protected against re-contamination in an appropriate way, until dispensing the mortar in the bore hole. If necessary, the cleaning has to be repeated directly before dispensing the mortar.

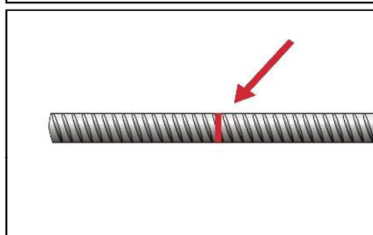
C) Preparation of bar and cartridge



3. Attach the supplied static-mixing nozzle to the cartridge and load the cartridge into the correct dispensing tool.
For every working interruption longer than the recommended working time (Table B3) as well as for every new cartridges, a new static-mixer shall be used.



3a. In case of using the mixer extension VL16/1,8, the tip of the mixer nozzle has to be cut off at position „X“.



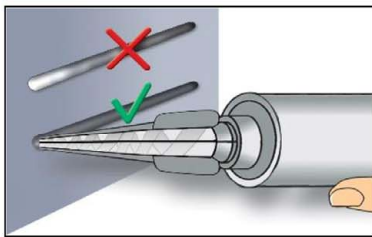
4. Prior to inserting the reinforcing bar into the filled bore hole, the position of the embedment depth shall be marked (e.g. with tape) on the reinforcing bar and insert bar in empty hole to verify hole and depth l_v .
The reinforcing bar should be free of dirt, grease, oil or other foreign material.

Mapei Injection system Mapefix UM Hybrid for rebar connection

Intended Use

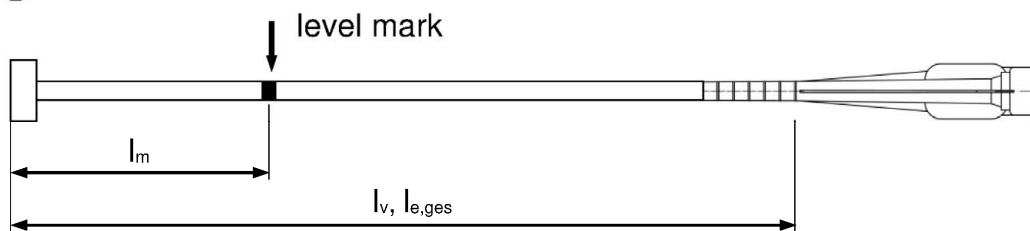
Installation instruction: Bore hole cleaning
Preparation of bar and cartridge

Annex B 8



5. Prior to dispensing into the bore hole, squeeze out separately the mortar until it shows a consistent grey colour, but a minimum of three full strokes, and discard non-uniformly mixed adhesive components.

D) Filling the bore hole



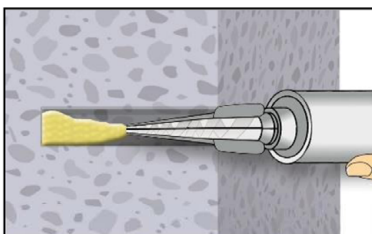
Injection tool must be marked by mortar level mark l_m and anchorage depth l_v resp. $l_{e,ges}$ with tape or marker.

Quick estimation: $l_m = 1/3 \cdot l_v$

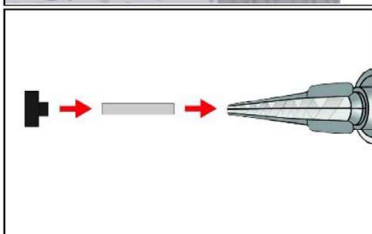
Continue injection until the mortar level mark l_m becomes visible.

Optimum mortar volume:

$$l_m = l_v \text{ resp. } l_{e,ges} \cdot \left(1,2 \cdot \frac{\phi^2}{d_0^2} - 0,2 \right)$$

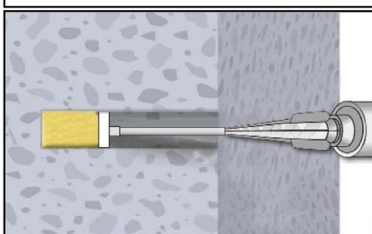


- 6a. Starting from the bottom or back of the cleaned bore hole fill the hole with adhesive, until the level mark at the mixer extension (see below) is visible at the top of the hole. If the bottom or back of the anchor hole is not reached, an appropriate extension nozzle must be used. Slowly withdraw the static mixing nozzle and using a piston plugs during injection of the mortar, helps to avoid creating air pockets. Observe the gel-/ working times given in Table B3.



- 6b. Piston plugs shall be used according to Table B5 or B6 for the following applications:
- For overhead and horizontal installation
 - In vertical downwards direction with bore holes deeper than 250 mm

Assemble mixing nozzle, mixer extension and piston plug before injecting mortar.



- 6c. Insert piston plug to back of the hole and inject adhesive. If the bottom or back of the anchor hole is not reached, an appropriate extension nozzle must be used. During injection the piston plug will be naturally extruded out of the drill hole by the adhesive pressure. Observe the gel-/ working times given in Table B3.

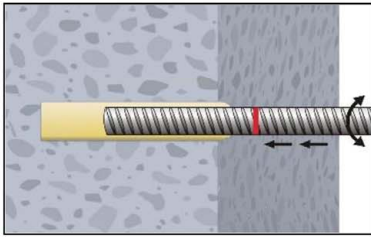
Mapei Injection system Mapefix UM Hybrid for rebar connection

Intended Use

Installation instruction: Preparation of bar and cartridge
Filling the bore hole

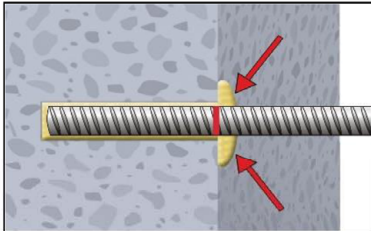
Annex B 9

E) Setting the rebar

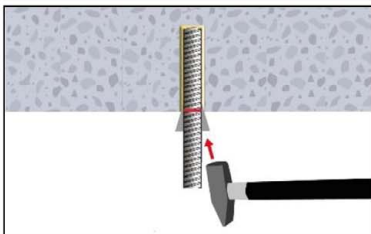


7. Push the reinforcing bar into the bore hole while turning slightly to ensure positive distribution of the adhesive until the embedment depth is reached.

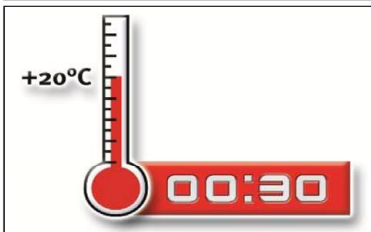
The reinforcing bar should be free of dirt, grease, oil or other foreign material.



8. Be sure that the bar is inserted in the bore hole until the embedment mark is at the concrete surface and that excess mortar is visible at the top of the hole. If these requirements are not maintained, the application has to be renewed.



- 8a. For horizontal and overhead installation fix embedded part (e.g. with wedges) until the mortar has started to harden.



9. Observe gelling and curing time according to Table B3. Slightly adjustment of the reinforcing bar within the gelling time t_{gel} is possible. The full load to the reinforcing bar may be applied after the full curing time t_{cure} has elapsed. Attend that the gelling time can vary according to the base material temperature.

Mapei Injection system Mapefix UM Hybrid for rebar connection

Intended Use

Installation instruction: Inserting rebar

Annex B 10

Table C1: Characteristic tension resistance for tension anchor ZA

Tension Anchor			M12	M16	M20	M24
Steel, zinc plated (ZA vz)						
Characteristic tension resistance	N _{Rk,s}	[kN]	67	125	196	282
Partial factor	γ _{Ms,N}	[-]	1,4			
Stainless Steel (ZA A4 or ZA HCR)						
Characteristic tension resistance	N _{Rk,s}	[kN]	67	125	171	247
Partial factor	γ _{Ms,N}	[-]	1,4		1,3	1,4

Minimum anchorage length and minimum lap length under static or quasi-static loading

The minimum anchorage length $l_{b,min}$ and the minimum lap length $l_{0,min}$ according to EN 1992-1-1:2004+AC:2010 ($l_{b,min}$ acc. to Eq. 8.6 and Eq. 8.7 and $l_{0,min}$ acc. to Eq. 8.11) shall be multiply by the amplification factor $\alpha_{lb} = \alpha_{lb,100y}$ according to Table C2.

Table C2: Amplification factor $\alpha_{lb} = \alpha_{lb,100y}$ related to concrete class and drilling method; working life 50 and 100 years

Concrete class	Drilling method	Bar size	Amplification factor $\alpha_{lb} = \alpha_{lb,100y}$
C12/15 to C50/60	all drilling methods	8 mm to 32 mm ZA-M12 to ZA-M24	1,0

Table C3: Reduction factor $k_b = k_{b,100y}$ for all drilling methods; working life 50 and 100 years

Rebar	Concrete class								
ϕ	C12/15	C16/20	C20/25	C25/30	C30/37	C35/45	C40/50	C45/55	C50/60
8 to 32 mm ZA-M12 to ZA-M24	1,0								

Table C4: Design values of the ultimate bond stress $f_{bd,PIR}$ and $f_{bd,PIR,100y}$ in N/mm² for all drilling methods and for good conditions; working life 50 and 100 years

$$f_{bd,PIR} = k_b \cdot f_{bd}$$

$$f_{bd,PIR,100y} = k_{b,100y} \cdot f_{bd}$$

with

f_{bd} : Design value of the ultimate bond stress in N/mm² considering the concrete classes, the rebar diameter, the drilling method for good bond condition (for all other bond conditions multiply the values by $\eta_1 = 0.7$) and recommended partial factor $\gamma_c = 1.5$ according to EN 1992-1-1:2004+AC:2010.

$k_b, k_{b,100y}$: Reduction factor according to Table C3

Rebar	Concrete class								
ϕ	C12/15	C16/20	C20/25	C25/30	C30/37	C35/45	C40/50	C45/55	C50/60
8 to 32 mm ZA-M12 to ZA-M24	1,6	2,0	2,3	2,7	3,0	3,4	3,7	4,0	4,3

Mapei Injection system Mapefix UM Hybrid for rebar connection

Performances Characteristic tension resistance for tension anchor, Minimum anchorage length and minimum lap length, Amplification factor, Reduction factor and Design values of ultimate bond resistance

Annex C 1

Minimum anchorage length and minimum lap length under seismic action

The minimum anchorage length $l_{b,min}$ and the minimum lap length $l_{0,min}$ according to EN 1992-1-1:2004+AC:2010 ($l_{b,min}$ acc. to Eq. 8.6 and Eq. 8.7 and $l_{0,min}$ acc. to Eq. 8.11) shall be multiply by the amplification factor $\alpha_{lb,seis} = \alpha_{lb,seis,100y}$ according to Table C5.

Table C5: Amplification factor $\alpha_{lb,seis} = \alpha_{lb,seis,100y}$ related to concrete class and drilling method; working life 50 and 100 years

Concrete class	Drilling method	Bar size	Amplification factor $\alpha_{lb,seis} = \alpha_{lb,seis,100y}$
C16/20 to C50/60	all drilling methods	10 mm to 32 mm	1,0

Table C6: Reduction factor $k_{b,seis} = k_{b,seis,100y}$ for all drilling methods; working life 50 and 100 years

Rebar	Concrete class								
ϕ	C12/15	C16/20	C20/25	C25/30	C30/37	C35/45	C40/50	C45/55	C50/60
10 to 32 mm	No performance assessed	1,0							

Table C7: Design values of the ultimate bond stress $f_{bd,PIR,seis}$ and $f_{bd,PIR,seis,100y}$ in N/mm² for all drilling methods and for good conditions; working life 50 and 100 years

$$f_{bd,PIR,seis} = k_{b,seis} \cdot f_{bd}$$

$$f_{bd,PIR,seis,100y} = k_{b,seis,100y} \cdot f_{bd}$$

with

f_{bd} : Design value of the ultimate bond stress in N/mm² considering the concrete classes, the rebar diameter, the drilling method for good bond condition (for all other bond conditions multiply the values by $\eta_1 = 0.7$) and recommended partial factor $\gamma_c = 1,5$ according to EN 1992-1-1:2004+AC:2010.

$k_{b,seis}, k_{b,seis,100y}$: Reduction factor according to Table C6

Rebar	Concrete class								
ϕ	C12/15	C16/20	C20/25	C25/30	C30/37	C35/45	C40/50	C45/55	C50/60
10 to 32 mm	No performance assessed	2,0	2,3	2,7	3,0	3,4	3,7	4,0	4,3

Mapei Injection system Mapefix UM Hybrid for rebar connection

Performances Minimum anchorage length and minimum lap length, Amplification factor, Reduction factor and Design values of ultimate bond stress under seismic action

Annex C 2

Design value of the ultimate bond stress $f_{bd,fi}$, $f_{bd,fi,100y}$ at increased temperature for concrete classes C12/15 to C50/60, (all drilling methods); working life 50 and 100 years:

The design value of the bond stress $f_{bd,fi}$ at increased temperature has to be calculated by the following equation:

For working life 50 years: $f_{bd,fi} = k_{fi}(\theta) \cdot f_{bd,PIR} \cdot \gamma_c / \gamma_{M,fi}$

with: $\theta \leq 364^\circ\text{C}$: $k_{fi}(\theta) = 30,34 \cdot e^{(\theta \cdot -0,011)} / (f_{bd,PIR} \cdot 4,3) \leq 1,0$
 $\theta > 364^\circ\text{C}$: $k_{fi}(\theta) = 0$

For working life 100 years: $f_{bd,fi,100y} = k_{fi,100y}(\theta) \cdot f_{bd,PIR,100y} \cdot \gamma_c / \gamma_{M,fi}$

with: $\theta \leq 364^\circ\text{C}$: $k_{fi,100y}(\theta) = 30,34 \cdot e^{(\theta \cdot -0,011)} / (f_{bd,PIR,100y} \cdot 4,3) \leq 1,0$
 $\theta > 364^\circ\text{C}$: $k_{fi,100y}(\theta) = 0$

$f_{bd,fi}$, $f_{bd,fi,100y}$ Design value of the ultimate bond stress at increased temperature in N/mm^2

θ Temperature in $^\circ\text{C}$ in the mortar layer.

$k_{fi}(\theta)$, $k_{fi,100y}(\theta)$ Reduction factor at increased temperature.

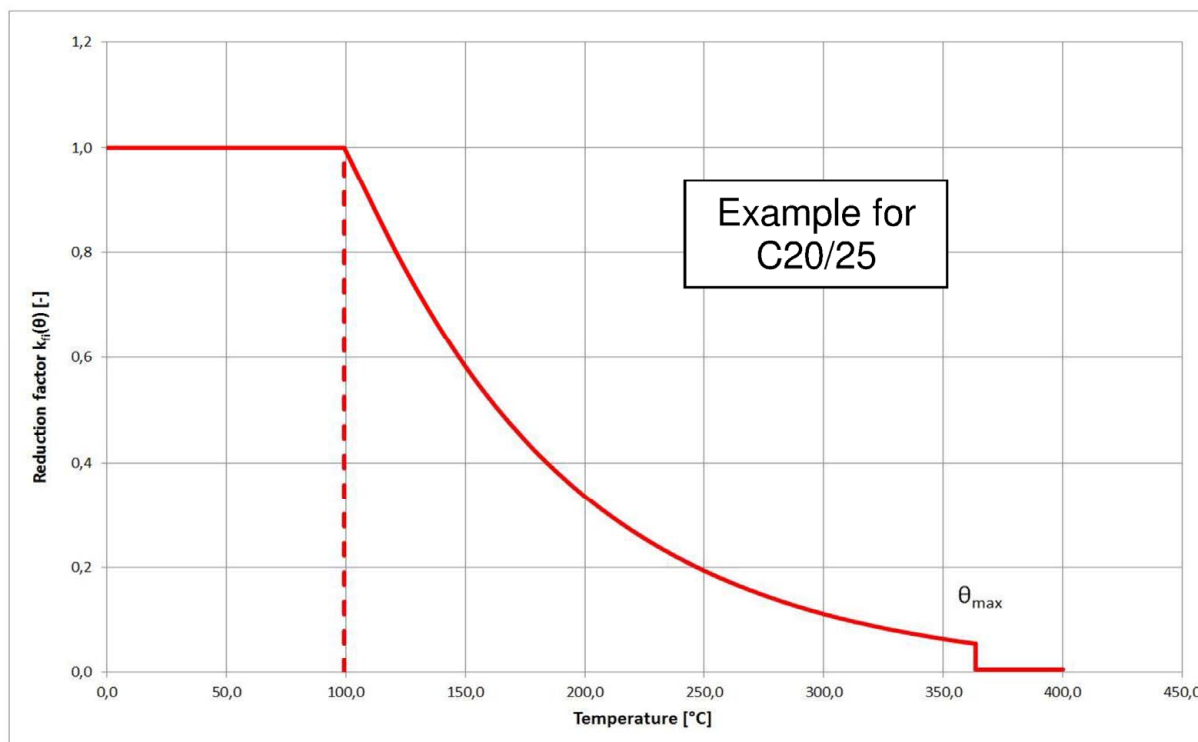
$f_{bd,PIR}$, $f_{bd,PIR,100y}$ Design value of the bond stress $f_{bd,PIR} = f_{bd,PIR,100y}$ in N/mm^2 in cold condition according to Table C4 considering the concrete classes, the rebar diameter, the drilling method and the bond conditions according to EN 1992-1-1:2004+AC:2010.

γ_c = 1,5, recommended partially safety factor according to EN 1992-1-1:2004+AC:2010

$\gamma_{M,fi}$ = 1,0, recommended partially safety factor according to EN 1992-1-2:2004+AC:2008

For evidence at increased temperature the anchorage length shall be calculated according to EN 1992-1-1:2004+AC:2010 Equation 8.3 using the temperature-dependent design value of ultimate bond stress $f_{bd,fi}$.

Example graph of Reduction factor $k_{fi}(\theta)$ for concrete classes C20/25 for good bond conditions:



Mapei Injection system Mapefix UM Hybrid for rebar connection

Performances

Design value of ultimate bond stress at increased temperature

Annex C 3

Table C8: Characteristic tension resistance for tension anchor ZA under fire exposure,
concrete classes C12/15 to C50/60, according to EN 1992-4:2018

Tension Anchor				M12	M16	M20	M24
Steel, zinc plated (ZA vz)							
Characteristic tension resistance	R30	N _{Rk,s,fi}	[kN]	2,3	4,0	6,3	9,0
	R60			1,7	3,0	4,7	6,8
	R90			1,5	2,6	4,1	5,9
	R120			1,1	2,0	3,1	4,5
Stainless Steel (ZA A4 or ZA HCR)							
Characteristic tension resistance	R30	N _{Rk,s,fi}	[kN]	3,4	6,0	9,4	13,6
	R60			2,8	5,0	7,9	11,3
	R90			2,3	4,0	6,3	9,0
	R120			1,8	3,2	5,0	7,2
Mapei Injection system Mapefix UM Hybrid for rebar connection						Annex C 4	
Performances Characteristic tension resistance for tension anchor under fire exposure							