

Public-law institution jointly founded by the
federal states and the Federation

**European Technical Assessment Body
for construction products**



European Technical Assessment

**ETA-09/0155
of 6 October 2025**

English translation prepared by DIBt - Original version in German language

General Part

Technical Assessment Body issuing the
European Technical Assessment:

Deutsches Institut für Bautechnik

Trade name of the construction product

KEMPEROL 022 Sealing

Product family
to which the construction product belongs

Liquid applied watertight covering kits for wet room floors
and/or walls

Manufacturer

Kemper System GmbH
Holländische Str. 32-36
34246 Vellmar
GERMANY

Manufacturing plant

Kemper System GmbH
Holländische Str. 32-36
34246 Vellmar

This European Technical Assessment
contains

9 pages including 4 annexes which form an integral part
of this assessment

This European Technical Assessment is
issued in accordance with Regulation (EU)
No 305/2011, on the basis of

EAD 030352-00-0503

This version replaces

ETA-09/0155 issued on 9 December 2014

The European Technical Assessment is issued by the Technical Assessment Body in its official language. Translations of this European Technical Assessment in other languages shall fully correspond to the original issued document and shall be identified as such.

Communication of this European Technical Assessment, including transmission by electronic means, shall be in full. However, partial reproduction may only be made with the written consent of the issuing Technical Assessment Body. Any partial reproduction shall be identified as such.

This European Technical Assessment may be withdrawn by the issuing Technical Assessment Body, in particular pursuant to information by the Commission in accordance with Article 25(3) of Regulation (EU) No 305/2011.

Specific part

1 Technical description of the product

The watertight covering for wet room floors and walls "KEMPEROL 022 Sealing" is a kit. It consists of the following components:

- Two-component liquid waterproofing membrane on the basis of an epoxy modified polyurethane.
- Reinforcement nonwoven "KEMPEROL 500 fleece" on the basis of polyester.
- Details for sealing pipe penetrations, floor gullies, sealing joints, corners and edges belonging to the kit are cut of the "KEMPEROL 500 fleece".
- Tile adhesive "KEMPERDUR MT" on the basis of cement mortar in accordance with EN 12004¹.

The kit is intended to be used under a wearing surface, e.g., tiles. The wearing surface and the jointing material are not part of the kit, but are considered during the assessment of the intended use of the product. Pipes and floor gullies themselves are not part of the kit.

Annex A2 shows the system build-up and Annex A3 shows the sealing details.

2 Specification of the intended use in accordance with the applicable European Assessment Document

The kit is intended for the waterproofing of floors and walls in indoor wet areas under a wearing surface at possible temperature of between 5 °C and 40 °C.

The following uses are intended:

- Floor and/or wall surfaces with only occasional direct exposure to water, e. g., at a good distance from shower or bathtub.
- Floor and/or wall in shower areas or around bathtubs used for a few showers daily, e. g., in ordinary dwellings, multifamily houses and hotels.
- Floor and/or wall surfaces with exposure to water more frequent or of longer duration than normally anticipated in dwellings, e. g., public wet rooms, schools and sport facilities.

The waterproofing system is intended to be used on flexible substrate e. g., plywood, chipboard, gypsum, anhydrite or similar material vulnerable to water and on rigid substrates e. g., masonry or concrete.

The product is used in connection with the following types of drains:

Stainless steel or plastics – type PP or PE – with flange for attaching of collar/waterproofing layer or with clamping ring and collar. It is up to the responsibility of the user to use suitable products of the given types.

The performances given in Section 3 are only valid if the watertight covering kit is used in compliance with the specifications and conditions given in Annex B and the installation instructions of the manufacturer stated in the technical documents².

The verifications and assessment methods on which this European Technical Assessment is based lead the assumption of working life of the watertight covering kit of 25 years. The indications given on the working life cannot be interpreted as a guarantee given by the producer, but are to be regarded only as a means for choosing the right products in relation to the expected economically reasonable working life of the works.

¹ EN 12004:2007+A1:2012 Adhesives for tiles - Requirements, evaluation of conformity, classification and designation

² The manufacturer's technical documents comprise all information necessary for the production and the installation of the product as well as for repair of the waterproofing made from that and it is deposited with DIBt.

3 Performance of the product and references to the methods used for its assessment

3.1 Safety in case of fire (BWR 2)

Essential characteristic	Performance
Reaction to fire	See Annex A1

3.2 Hygiene, health and the environment (BWR 3)

Essential characteristic	Performance
Content, emission and/or Release of dangerous substances:	See Annex A1
Vapour permeability	See Annex A1
Watertightness	See Annex A1
Crack bridging ability	See Annex A1
Bond strength	See Annex A1
Scratching resistance	No performance assessed (not relevant)
Joint bridging ability	See Annex A1
Watertightness around penetration	See Annex A1
Resistance to temperature	See Annex A1
Resistance to water	See Annex A1
Resistance to alkalinity	See Annex A1
Resistance to mechanical wear	No performance assessed (not relevant)

3.3 Safety and accessibility in use (BWR 4)

Essential characteristic	Performance
Slipperiness	No performance assessed (not relevant)
Reparability	See Annex A1
Thickness	See Annex A1

4 Assessment and verification of constancy of performance (AVCP) system applied, with reference to its legal base

In accordance with EAD No. 030352-00-0503, the applicable European legal act is: 2003/665/EC.

The system to be applied is: 2+

In addition, with regard to reaction to fire for products covered by this EAD the system to be applied is: 3

5 Technical details necessary for the implementation of the AVCP system, as provided for in the applicable EAD

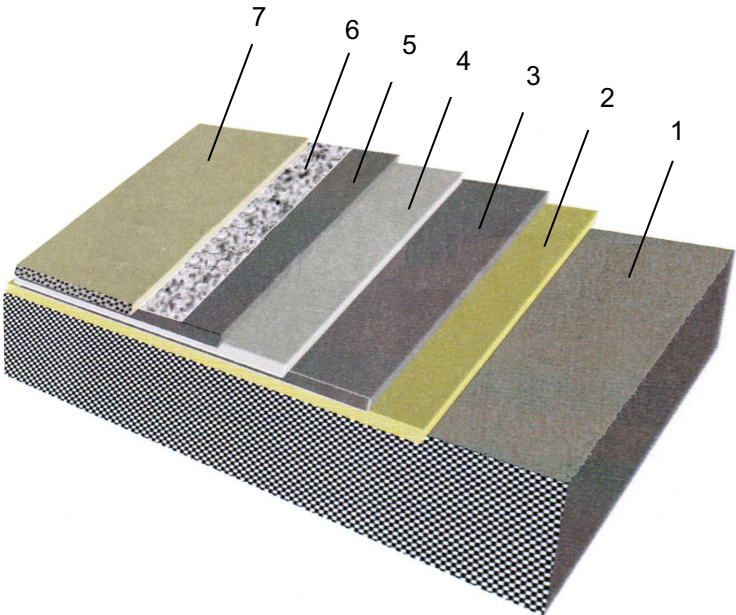
Technical details necessary for the implementation of the AVCP system are laid down in the control plan deposited with Deutsches Institut für Bautechnik.

Issued in Berlin on 6 October 2025 by Deutsches Institut für Bautechnik

Bettina Hemme
Head of Section

beglaubigt:
Hannoun

Working life	25 years
Essential characteristic	Performance
Reaction to fire EN 13501-1	Class E
Content, emission and/or release of dangerous substances	
Component: Tile adhesive (CE-marked)	According to EN 12004
All other components:	
Substances, classified as Carc. 1A/1B ^{a)}	None of these classified substances are actively used in the manufacturing of the construction product ^{b) c)}
Substances, classified as Muta. 1A/1B ^{a)}	
Substances, classified as Acute Tox. 1, 2, 3; Repr. 1A/1B; STOT SE 1 and STOT RE 1 ^{a)}	
SVOC and VOC	
Release scenario regarding BWR 3: IA2	No performance assessed
Vapour permeability (Water vapour diffusion-equivalent air layer thickness / water vapour resistance factor) 23 °C – 50/93 % r. h. 2 layers of " KEMPEROL 022" with "KEMPEROL 500 fleece"; 1 mm thick	
	$s_d \approx 2.7 \text{ m} / \mu \approx 2700$
Water tightness	Watertight
Crack bridging ability	Category 3: Crack width 1.5 mm
Bond strength using the tile adhesive: "KEMPERDUR MT"	Category 2: Bond strength $\geq 0.5 \text{ MPa}$
Scratching resistance	No performance assessed ^{d)}
Joint bridging ability	Can bridge joints (watertight, joint width 2 mm)
Water tightness around penetrations (Tests according to Annex A and Annex F of EAD)	Watertight (on flexible and rigid floors and walls)
Resistance to temperature	Category 2: Bond strength $\geq 0.5 \text{ MPa}$ + Crack width 1.5 mm / joint width 2 mm
Resistance to water	Category 2: Bond strength $\geq 0.5 \text{ MPa}$
Resistance to alkalinity	Category 2: Bond strength $\geq 0.5 \text{ MPa}$
Resistance to mechanical wear	No performance assessed ^{d)}
Slipperiness	No performance assessed ^{d)}
Reparability	Reparable
Thickness Minimum layer thickness of the waterproofing layer	
	1 mm
^{a)} In accordance with Regulation (EC) No 1272/2008. ^{b)} Assessment based on the detailed manufacturer's statements on dangerous substances. ^{c)} Active use is the targeted use of substances to achieve specific product properties. Substances that are present as impurities and/or as a secondary component in the product are therefore not to be regarded as "actively used". ^{d)} Not relevant for a waterproofing beneath a protection layer.	
KEMPEROL 022 Sealing KEMPER SYSTEM GmbH	Annex A1
Levels of use categories and performance of the product	

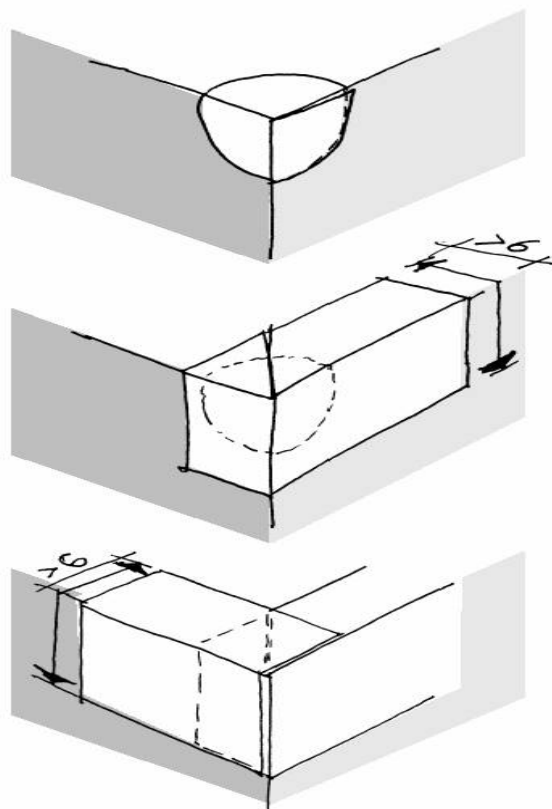


- 1) Substrate
- 2) 1st layer "KEMPEROL 022"
- 3) "KEMPEROL 500 fleece"
- 4) 2nd layer "KEMPEROL 022"
- 5) Quartz sand (not part of the kit)
- 6) Tile adhesive "KEMPERDUR MT"
- 7) Protection layer (e. g. tiles) (not part of the kit)

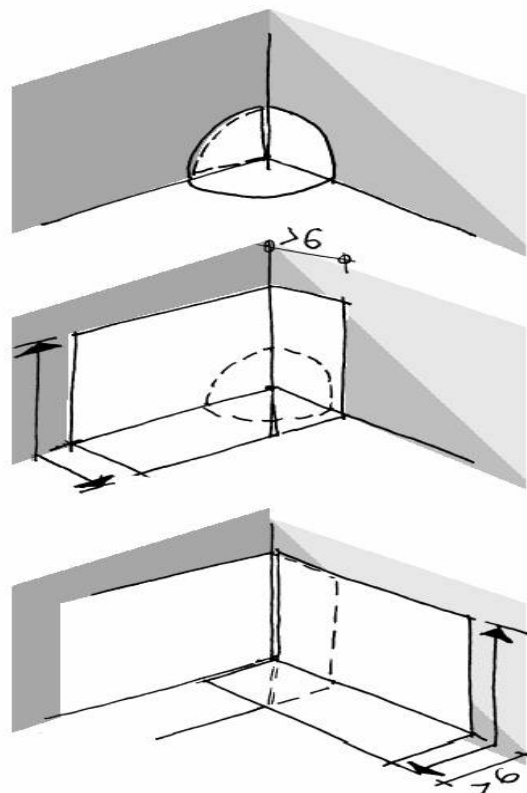
KEMPEROL 022 Sealing KEMPER SYSTEM GmbH	Annex A2
System built-up	

"KEMPEROL 500 fleece" – Cuts for details

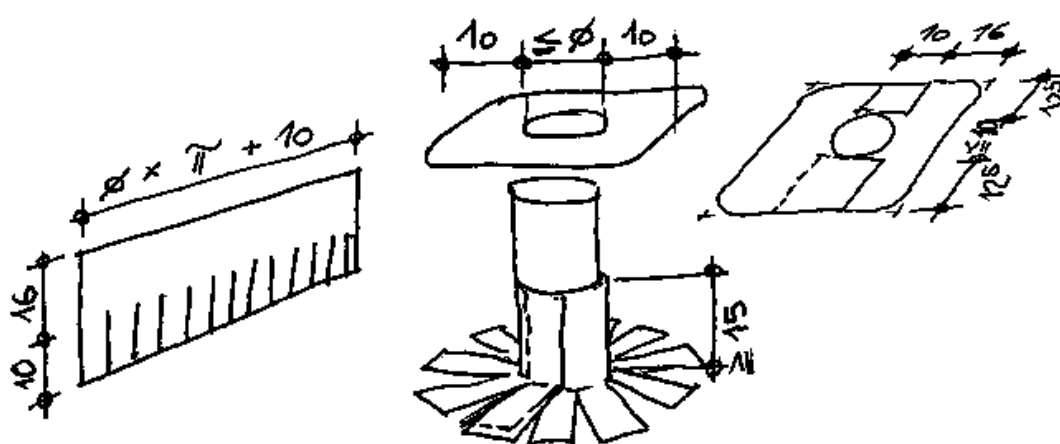
Outgoing corner



Ingoing corner



Penetrations



KEMPEROL 022 Sealing
KEMPER SYSTEM GmbH

Cuts for details

Annex A3

Installation

The levels of use categories and the performance of the waterproofing kit can be assumed only, if the installation is carried out according to the installation instructions stated in the technical file of the manufacturer, in particular taking account of the following points:

- installation by appropriately trained personnel;
- installation of only those components which are specified components of the kit;
- installation with the required tools and adjuvant;
- precautions during installation;
- inspecting the substrate surface for cleanliness and correct treatment;
- inspecting during installation and of the finished watertight membrane and documentation of the results.

KEMPEROL 022 Sealing
KEMPER SYSTEM GmbH

Intended use
Specifications for the installation

Annex B