

Public-law institution jointly founded by the  
federal states and the Federation

European Technical Assessment Body  
for construction products



## European Technical Assessment

ETA-01/0013  
of 29 January 2026

English translation prepared by DIBt - Original version in German language

### General Part

Technical Assessment Body issuing the  
European Technical Assessment:

Deutsches Institut für Bautechnik

Trade name of the construction product

Wedge Anchor B

Product family  
to which the construction product belongs

Mechanical fastener for use in concrete

Manufacturer

MKT

Metall-Kunststoff-Technik GmbH & Co. KG

Auf dem Immel 2

67685 Weilerbach

GERMANY

Manufacturing plant

MKT

Metall-Kunststoff-Technik GmbH & Co. KG

Auf dem Immel 2

67685 Weilerbach

This European Technical Assessment  
contains

16 pages including 3 annexes which form an integral part  
of this assessment

This European Technical Assessment is  
issued in accordance with Article 95(4) of  
Regulation (EU) No 2024/3110, on the basis of

EAD 330232-02-0601

This version replaces

ETA-01/0013 issued on 24 May 2022

The European Technical Assessment is issued by the Technical Assessment Body in its official language. Translations of this European Technical Assessment in other languages shall fully correspond to the original issued document and shall be identified as such.

Communication of this European Technical Assessment, including transmission by electronic means, shall be in full. However, partial reproduction may only be made with the written consent of the issuing Technical Assessment Body. Any partial reproduction shall be identified as such.

This European Technical Assessment may be withdrawn by the issuing Technical Assessment Body, in particular pursuant to information by the Commission in accordance with Article 36(3) of Regulation (EU) No 2024/3110.

## Specific Part

### 1 Technical description of the product

The Wedge anchor B is a fastener made of zinc plated steel (B, B fvz, B sh) or stainless steel (B A2, B A4, B HCR) which is placed into a drilled hole and anchored by torque-controlled expansion.

The product description is given in Annex A.

### 2 Specification of the intended use in accordance with the applicable European Assessment Document

The performances given in Section 3 are only valid if the anchor is used in compliance with the specifications and conditions given in Annex B.

The verifications and assessment methods on which this European Technical Assessment is based lead to the assumption of a working life according to Annex B1, use conditions. The indications given on the working life cannot be interpreted as a guarantee given by the producer, but are to be regarded only as a means for choosing the right products in relation to the expected economically reasonable working life of the works.

### 3 Performance of the product and references to the methods used for its assessment

#### 3.1 Mechanical resistance and stability (BWR 1)

Essential characteristic	Performance
Characteristic resistance to tension load (static and quasi static loading) Method A	See Annex B5, C1 and C2
Characteristic resistance to shear load (static and quasi static loading)	See Annex C3
Displacements	See Annex C4
Stiffness	No performance assessed
Characteristic resistance and displacements for seismic performance categories C1 and C2	No performance assessed
Durability	See Annex B1

#### 3.2 Safety in case of fire (BWR 2)

Essential characteristic	Performance
Reaction to fire	Class A1
Resistance to fire	No performance assessed

**4 Assessment and verification of constancy of performance (AVCP) system applied, with reference to its legal base**

In accordance with the European Assessment Document EAD 330232-02-0601 the applicable European legal act is: [96/582/EC].

The system to be applied is: 1

**5 Technical details necessary for the implementation of the AVCP system, as provided for in the applicable EAD**

Technical details necessary for the implementation of the AVCP system are laid down in the control plan deposited with Deutsches Institut für Bautechnik.

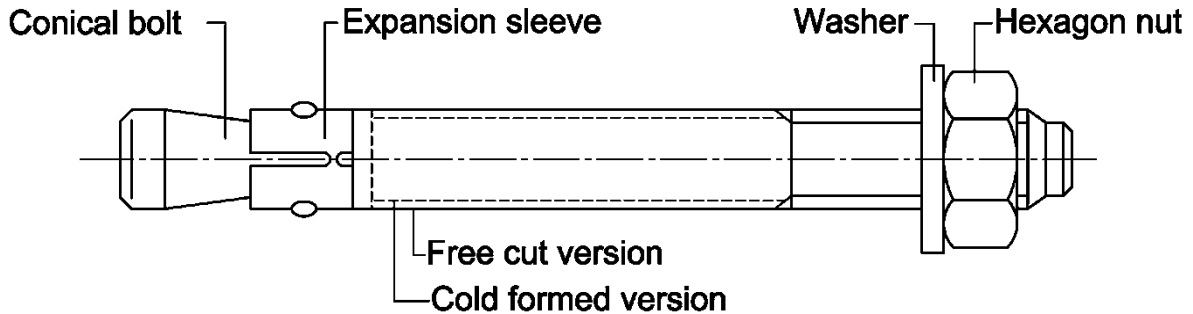
Issued in Berlin on 29 January 2026 by Deutsches Institut für Bautechnik

Dipl.-Ing. Beatrix Wittstock  
Head of Section

*beglaubigt:*  
Ziegler

## Wedge Anchor B

B / B fvz / B sh / B A2 / B A4 / B HCR



**Table A1: Dimensions**

Anchor size	Anchor length L			Wrench size
	Embedment depth $h_{ef,1}$	Embedment depth $h_{ef,2}$	Embedment depth $h_{ef,3}$	
M6	$t_{fix,hef,1} + 47,4$	$t_{fix,hef,2} + 57,4$	$t_{fix,hef,3} + 77,4$	10
M8	$t_{fix,hef,1} + 57,4$	$t_{fix,hef,2} + 66,4$	$t_{fix,hef,3} + 92,4$	13
M10	$t_{fix,hef,1} + 68,0$	$t_{fix,hef,2} + 74,0$	$t_{fix,hef,3} + 106,0$	17
M12	$t_{fix,hef,1} + 82,3$	$t_{fix,hef,2} + 97,3$	$t_{fix,hef,3} + 132,3$	19
M16	$t_{fix,hef,1} + 103,0$ ( $t_{fix,hef,1} + 101,8$ ) <sup>1)</sup>	$t_{fix,hef,2} + 121,0$ ( $t_{fix,hef,2} + 117,8$ ) <sup>1)</sup>	$t_{fix,hef,3} + 159,0$ ( $t_{fix,hef,3} + 157,8$ ) <sup>1)</sup>	24
M20	$t_{fix,hef,1} + 120,7$	$t_{fix,hef,2} + 142,7$	$t_{fix,hef,3} + 157,7$	30

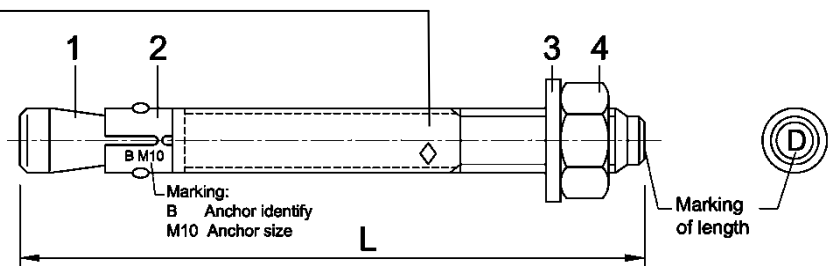
<sup>1)</sup> Anchor version B A2 / B A4 / B HCR

**Marking:** e.g.:  $\diamond 15/21$

- $\diamond$  Identifying mark of manufacturing plant
- 15 maximum thickness of fixture for  $h_{ef,2}$
- 21 maximum thickness of fixture for  $h_{ef,1}$

**additional marking:**

- A2 stainless steel
- A4 stainless steel
- HCR high corrosion resistant steel



Marking of length	A	B	C	D	E	F	G	H	I	J	K	L	M
Length of anchor min $\geq$	38,1	50,8	63,5	76,2	88,9	101,6	114,3	127,0	139,7	152,4	165,1	177,8	190,5
Length of anchor max $<$	50,8	63,5	76,2	88,9	101,6	114,3	127,0	139,7	152,4	165,1	177,8	190,5	203,2

Marking of length	N	O	P	Q	R	S	T	U	V	W	X	Y	Z
Length of anchor min $\geq$	203,2	215,9	228,6	241,3	254,0	279,4	304,8	330,2	355,6	381,0	406,4	431,8	457,2
Length of anchor max $<$	215,9	228,6	241,3	254,0	279,4	304,8	330,2	355,6	381,0	406,4	431,8	457,2	483,0

Dimensions in mm

## Wedge Anchor B

Product description  
Marking and Dimensions

**Annex A1**

**Table A2: Materials**

Part	Designation	Material
<b>Zinc plated steel</b>		
<b>B</b>	electroplated	≥ 5 µm according to EN ISO 4042:2022
<b>B fvz</b>	hot dip galvanized	≥ 50 µm (average coating thickness according to EN ISO 10684:2004+AC:2009 or EN ISO 1461:2022)
<b>B sh</b>	sherardized	≥ 45 µm according to EN ISO 17668:2016
1	Conical bolt	Cold formed or machined steel
2	Expansion sleeve	Stainless steel
3	Washer	Steel, zinc plated
4	Hexagon nut	Steel, zinc plated
<b>Stainless steel</b>		
<b>B A2 stainless steel CRC II <sup>1)</sup></b>		
1	Conical bolt	Stainless steel
2	Expansion sleeve	Stainless steel
3	Washer	Stainless steel
4	Hexagon nut	Stainless steel
<b>B A4 stainless steel CRC III <sup>1)</sup></b>		
1	Conical bolt	Stainless steel
2	Expansion sleeve	Stainless steel
3	Washer	Stainless steel
4	Hexagon nut	Stainless steel
<b>B HCR High corrosion resistant steel CRC V <sup>1)</sup></b>		
1	Conical bolt	High corrosion resistant steel
2	Expansion sleeve	Stainless steel
3	Washer	High corrosion resistant steel
4	Hexagon nut	High corrosion resistant steel

<sup>1)</sup> Corrosion resistance class according to EN 1993-1-4:2015, Annex A, Table A.3

**Wedge Anchor B**

**Product description**  
Materials

**Annex A2**

## Specifications of intended use

Wedge Anchor B		M6	M8	M10	M12	M16	M20
zinc plated steel	<b>B</b> (electroplated)	✓	✓	✓	✓	✓	✓
	<b>B fvz</b> (hot dip galvanized)	1)	✓	✓	✓	✓	✓
	<b>B sh</b> (sherardized)	✓	✓	✓	✓	✓	✓
stainless steel	<b>B A2</b>	✓	✓	✓	✓	✓	✓
	<b>B A4</b>	✓	✓	✓	✓	✓	✓
	<b>B HCR</b>	✓	✓	✓	✓	✓	✓
all versions	static or quasi-static action	✓					
	uncracked concrete	✓					

1) no performance assessed

### Base materials:

- Compacted reinforced or unreinforced normal weight concrete without fibres according to EN 206:2013 + A1:2016
- Strength classes C20/25 to C50/60 according to EN 206:2013 + A1:2016

### Use conditions (Environmental conditions):

For working life for at least 50 years

- Structures subject to dry internal conditions (all materials).
- For all other conditions:

Anchor version	Use according to EN 1993-1-4:2015 corresponding to the corrosion resistance class CRC according to Annex A, Table A2
<b>B A2</b>	CRC II
<b>B A4</b>	CRC III
<b>B HCR</b>	CRC V

For variable working life

- Structures subject to internal and external conditions: classification of atmospheric corrosivity, determination and estimation C1-CX according to EN ISO 9223:2012-02, Table C.1 for a variable working life according to Annex B2, Table B1:
  - carbon steel, hot dip galvanized with mean thickness  $\geq 50 \mu\text{m}$  (anchor version: **B fvz**)
  - carbon steel, sherardized with mean thickness  $\geq 45 \mu\text{m}$  (anchor version: **B sh**)

### Design:

- Anchorages are designed under the responsibility of an engineer experienced in anchorages and concrete work.
- Verifiable calculation notes and drawings are prepared taking account of the loads to be anchored. The position of the anchor is indicated on the design drawings (e.g. position of the anchor relative to reinforcement or to supports, etc.).
- Anchorages are designed according to EN 1992-4:2018.

### Installation:

- Hole drilling by hammer drill bit or vacuum drill bit.
- Use of the fastener only as supplied by the manufacturer without exchanging the components

<b>Wedge Anchor B</b>	<b>Annex B1</b>
<b>Intended use Specifications</b>	

**Table B1: Durability for B fvz and B sh** in accordance to corrosivity categories and layer thickness

Corrosivity category	Corrosivity	Durability	
		B fvz hot dip galvanized ≥ 50 µm (see Table A3)	B sh sherardized ≥ 45 µm (see Table A3)
[-]	[-]	[years]	[years]
C1	Very low	50	50
C2	Low	50	50
C3	Medium	25	22,5
C4	High	12,5	11
C5	Very high	5,5	5
CX	Extreme	2	1,5

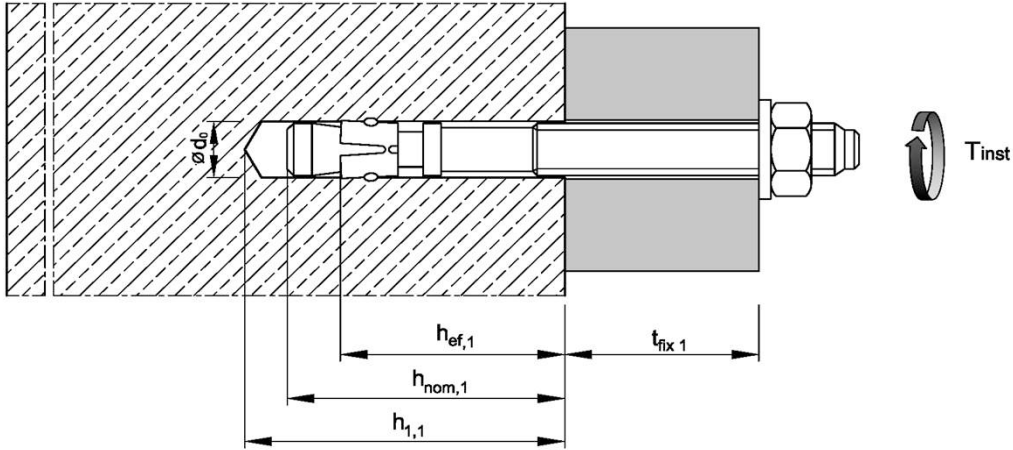
**Wedge Anchor B**

**Intended Use**  
**Durability – Working life for B fvz and B sh**

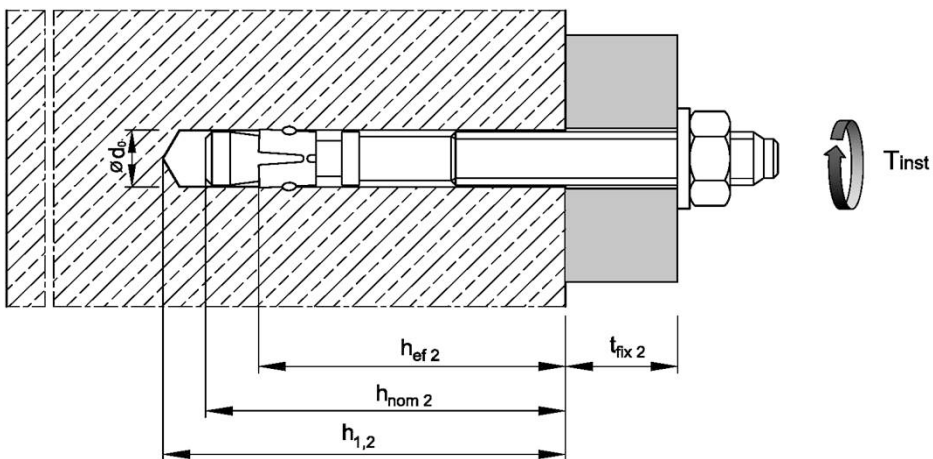
**Annex B2**

### Installation condition

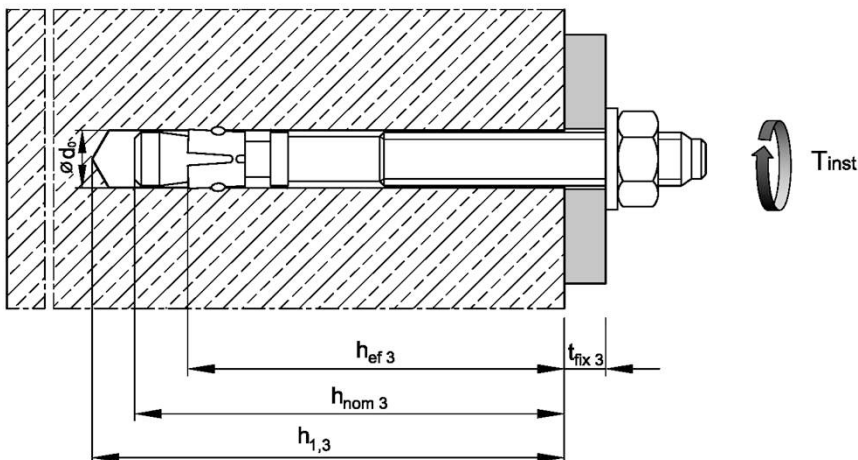
#### Effective embedment depths $h_{ef,1}$



#### Effective embedment depths $h_{ef,2}$



#### Effective embedment depths $h_{ef,3}$



Wedge Anchor B

Intended use  
Installation condition

Annex B3

**Table B2: Installation parameters**

Anchor size			M6	M8	M10	M12	M16	M20	
Nominal drill hole diameter	$d_0 =$	[mm]	6	8	10	12	16	20	
Cutting diameter of drill bit	$d_{cut} \leq$	[mm]	6,40	8,45	10,45	12,5	16,5	20,55	
Installation torque	B	$T_{inst} =$	[Nm]	8	15	30	50	100	200
	B fvz	$T_{inst} =$	[Nm]	-	15	30	40	90	120
	B sh	$T_{inst} =$	[Nm]	5	15	30	40	90	120
	B A2 / B A4 / B HCR	$T_{inst} =$	[Nm]	6	15	25	50	100	160
Diameter of clearance hole in the fixture	$d_f \leq$	[mm]	7	9	12	14	18	22	
Embedment depth	$h_{ef,1} \geq$	[mm]	30	35	42	50	64	78	
	$h_{ef,2} \geq$	[mm]	40	44	48	65	82 (80) <sup>1)</sup>	100	
	$h_{ef,3} \geq$	[mm]	60	70	80	100	120	115	
Depth of drill hole	$h_1 \geq$	[mm]	$h_{ef} + 15$	$h_{ef} + 20$	$h_{ef} + 22$	$h_{ef} + 25$	$h_{ef} + 28$	$h_{ef} + 30$	
Embedment depth	$h_{nom} \geq$	[mm]	$h_{ef} + 9$	$h_{ef} + 12$	$h_{ef} + 14$	$h_{ef} + 17$	$h_{ef} + 20$	$h_{ef} + 21$	

<sup>1)</sup> Anchor version B A2 / B A4 / B HCR

**Wedge Anchor B**

**Intended use**  
Installation parameters

**Annex B4**

**Table B3: Minimum spacings and edge distances, zinc plated steel <sup>1)</sup>**

Anchor size			M6	M8	M10	M12	M16	M20
<b>Embedment depth <math>h_{ef,1}</math></b>								
Minimum member thickness	$h_{min}$	[mm]	80	80	100	100	130	160
Minimum spacing	$s_{min}$	[mm]	35	40	55	100	100	140
Minimum edge distance	$c_{min}$	[mm]	40	45	65	100	100	140
<b>Embedment depth <math>h_{ef,2}</math></b>								
Minimum member thickness	$h_{min}$	[mm]	100	100	100	130	170	200
Minimum spacing	$s_{min}$	[mm]	35	40	55	75	90	105
Minimum edge distance	$c_{min}$	[mm]	40	45	65	90	105	125
<b>Embedment depth <math>h_{ef,3}</math></b>								
Minimum member thickness	$h_{min}$	[mm]	120	126	132	165	208	215
Minimum spacing	$s_{min}$	[mm]	35	40	55	75	90	105
Minimum edge distance	$c_{min}$	[mm]	40	45	65	90	105	125

<sup>1)</sup> Anchor version B M6 fvz: no performance assessed

**Table B4: Minimum spacings and edge distances, stainless steel**

Anchor size			M6	M8	M10	M12	M16	M20
<b>Embedment depth <math>h_{ef,1}</math></b>								
Minimum member thickness	$h_{min}$	[mm]	80	80	100	100	130	160
Minimum spacing	$s_{min}$	[mm]	35	60	55	100	110	140
Minimum edge distance	$c_{min}$	[mm]	40	60	65	100	110	140
<b>Embedment depth <math>h_{ef,2}</math></b>								
Minimum member thickness	$h_{min}$	[mm]	100	100	100	130	160	200
Minimum spacing	$s_{min}$	[mm]	35	35	45	60	80	100
	for $c \geq$	[mm]	40	65	70	100	120	150
Minimum edge distance	$c_{min}$	[mm]	35	45	55	70	80	100
	for $s \geq$	[mm]	60	110	80	100	140	180
<b>Embedment depth <math>h_{ef,3}</math></b>								
Minimum member thickness	$h_{min}$	[mm]	120	126	132	165	200	215
Minimum spacing	$s_{min}$	[mm]	35	35	45	60	80	100
	for $c \geq$	[mm]	40	65	70	100	120	150
Minimum edge distance	$c_{min}$	[mm]	35	45	55	70	80	100
	for $s \geq$	[mm]	60	110	80	100	140	180

Intermediate values by linear interpolation.

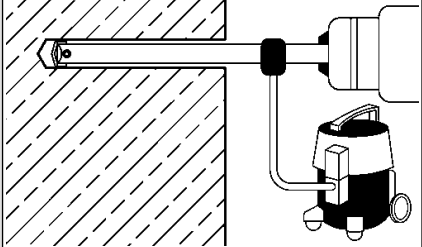
**Wedge Anchor B**

**Intended use**  
Minimum spacings and edge distances

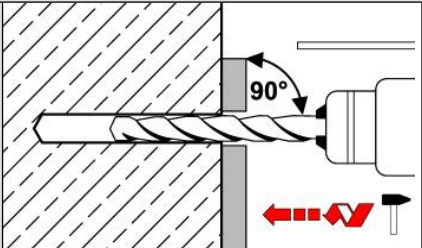
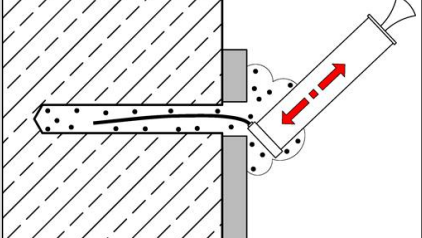
**Annex B5**

## Installation instructions

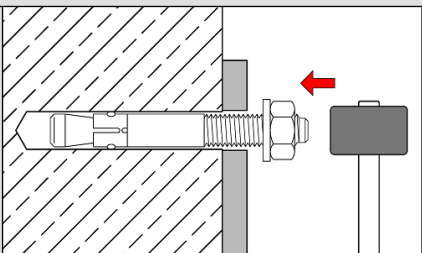
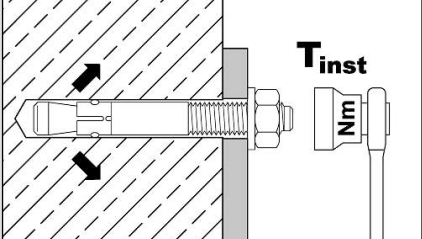
### Hole drilling and cleaning – vacuum drilling

<b>1</b>		<p><b>Vacuum drilling:</b> Drill hole perpendicular to concrete surface. No further cleaning necessary. Proceed with step 3.</p>
----------	-----------------------------------------------------------------------------------	----------------------------------------------------------------------------------------------------------------------------------------------

### Hole drilling and cleaning – hammer drilling

<b>1</b>		<p><b>Hammer drilling:</b> Drill hole perpendicular to concrete surface.</p>
<b>2</b>		<p>Blow out dust. Alternatively, vacuum clean down to the bottom of the hole.</p>

### Installation

<b>3</b>		<p>Drive in anchor, such that the selected embedment depth is met.</p>
<b>4</b>		<p>Apply installation torque <math>T_{inst}</math> as specified in Table B1.</p>

**Wedge Anchor B**

**Intended use**  
Installation instructions

**Annex B6**

**Table C1: Characteristic values for tension loads, zinc plated steel <sup>1)</sup>**

Anchor size			M6	M8	M10	M12	M16	M20	
Installation factor	$\gamma_{inst}$	[-]	1,0						
<b>Steel failure</b>									
Characteristic resistance	$N_{Rk,s}$	[kN]	8,7	15,3	26	35	65	107	
Partial factor <sup>4)</sup>	$\gamma_{Ms}$	[-]	1,5				1,6		
<b>Pull-out</b>									
Characteristic resistance in uncracked concrete C20/25	for $h_{ef,1}$	$N_{Rk,p,ucr}$	[kN]	6,5 <sup>2)</sup>	10,2 <sup>2)</sup>	13,4	17,4	25,2	33,9
	for $h_{ef,2}$	$N_{Rk,p,ucr}$	[kN]	10	13	16,4	25,8	36,5	49,2
	for $h_{ef,3}$	$N_{Rk,p,ucr}$	[kN]	10	13	16,4	26	40	55
Increasing factor $N_{Rk,p,ucr} = \psi_{C,ucr} \cdot N_{Rk,p,ucr} (C20/25)$	$\psi_{C,ucr}$	[-]	$\left(\frac{f_{ck}}{20}\right)^{0,5}$				$\left(\frac{f_{ck}}{20}\right)^{0,33}$	$\left(\frac{f_{ck}}{20}\right)^{0,5}$	
<b>Splitting</b>									
Characteristic resistance	$N^0_{Rk,sp}$	[kN]	min [ $N_{Rk,p,ucr}$ ; $N^0_{Rk,c}$ <sup>3)</sup> ]						
<b>Embedment depth <math>h_{ef,1}</math></b>									
Spacing	$s_{cr,sp}$	[mm]	180	210	230	240	320	400	
Edge distance	$c_{cr,sp}$	[mm]	90	105	115	120	160	200	
<b>Embedment depth <math>h_{ef,2}</math></b>									
Spacing	$s_{cr,sp}$	[mm]	160	220	240	330	410	500	
Edge distance	$c_{cr,sp}$	[mm]	80	110	120	165	205	250	
<b>Embedment depth <math>h_{ef,3}</math></b>									
Spacing	$s_{cr,sp}$	[mm]	160	220	240	330	410	520	
Edge distance	$c_{cr,sp}$	[mm]	80	110	120	165	205	260	
<b>Concrete cone failure</b>									
Effective embedment depth	for $h_{ef,1}$	[mm]	30 <sup>2)</sup>	35 <sup>2)</sup>	42	50	64	78	
	for $h_{ef,2}$	[mm]	40	44	48	65	82	100	
	for $h_{ef,3}$	[mm]	60	70	80	100	120	115	
Spacing	$s_{cr,N}$	[mm]	3 $h_{ef(1,2,3)}$						
Edge distance	$c_{cr,N}$	[mm]	1,5 $h_{ef(1,2,3)}$						
Factor	uncracked concrete	$k_{ucr,N}$	[-]	11,0					

<sup>1)</sup> Anchor version B M6 fvz: no performance assessed

Characteristic resistance  $N_{Rk,p,cr}$  and factor  $\psi_{c,cr}$  and  $k_{cr,N}$  for cracked concrete: no performance assessed

<sup>2)</sup> Restricted to the use of structural components with  $h_{ef} < 40$ mm which are statically indeterminate and subject to internal exposure conditions only

<sup>3)</sup>  $N^0_{Rk,c}$  according to EN 1992-4:2018

<sup>4)</sup> In absence of other national regulations

**Wedge Anchor B**

**Performance**

Characteristic values for tension loads, zinc plated steel

**Annex C1**

**Table C2: Characteristic values for tension loads, stainless steel** <sup>1)</sup>

Anchor size			M6	M8	M10	M12	M16	M20	
Installation factor	$\gamma_{inst}$	[-]	1,0						
<b>Steel failure</b>									
Characteristic resistance	$N_{Rk,s}$	[kN]	10	18	30	44	88	134	
Partial factor <sup>2)</sup>	$\gamma_{Ms}$	[-]	1,50						
<b>Pull-out</b>									
Characteristic resistance in uncracked concrete C20/25	for $h_{ef,1}$	$N_{Rk,p,ucr}$	[kN]	6,5 <sup>3)</sup>	9 <sup>3)</sup>	12	17,4	25,2	33,9
	for $h_{ef,2}$	$N_{Rk,p,ucr}$	[kN]	8	15	16,4	25	35,2	49,2
	for $h_{ef,3}$	$N_{Rk,p,ucr}$	[kN]	8	15	16,4	25	42	60
Increasing factor $N_{Rk,p,ucr} = \psi_{C,ucr} \cdot N_{Rk,p,ucr} (C20/25)$	$\psi_{C,ucr}$	[-]	$\left(\frac{f_{ck}}{20}\right)^{0,5}$						
<b>Splitting</b>									
Characteristic resistance	$N^0_{Rk,sp}$	[kN]	$\min [ N_{Rk,p,ucr} ; N^0_{Rk,c} ]$ <sup>4)</sup>						
<b>Embedment depth <math>h_{ef,1}</math></b>									
Spacing	$s_{cr,sp}$	[mm]	180	210	230	300	320	400	
Edge distance	$c_{cr,sp}$	[mm]	90	105	115	150	160	200	
<b>Embedment depth <math>h_{ef,2}</math></b>									
The higher one of the decisive resistances of Case 1 and Case 2 is applicable									
Case 1	Characteristic resistance	$N^0_{Rk,sp}$	[kN]	6	9	12	20	30	40
	Spacing	$s_{cr,sp}$	[mm]	$3 h_{ef}$					
	Edge distance	$c_{cr,sp}$	[mm]	$1,5 h_{ef}$					
	Increasing factor $N^0_{Rk,sp} = \psi_{C,ucr} \cdot N^0_{Rk,sp} (C20/25)$	$\psi_{C,ucr}$	[-]	$\left(\frac{f_{ck}}{20}\right)^{0,5}$					
Case 2	Spacing	$s_{cr,sp}$	[mm]	160	220	240	340	410	560
	Edge distance	$c_{cr,sp}$	[mm]	80	110	120	170	205	280
<b>Embedment depth <math>h_{ef,3}</math></b>									
Spacing	$s_{cr,sp}$	[mm]	160	220	240	340	410	620	
Edge distance	$c_{cr,sp}$	[mm]	80	110	120	170	205	310	
<b>Concrete cone failure</b>									
Effective embedment depth	for $h_{ef,1} \geq$	[mm]	30 <sup>3)</sup>	35 <sup>3)</sup>	42	50	64	78	
	for $h_{ef,2} \geq$	[mm]	40	44	48	65	80	100	
	for $h_{ef,3} \geq$	[mm]	60	70	80	100	120	115	
Spacing	$s_{cr,N}$	[mm]	$3 h_{ef(1,2,3)}$						
Edge distance	$c_{cr,N}$	[mm]	$1,5 h_{ef(1,2,3)}$						
Factor uncracked concrete	$k_{ucr,N}$	[-]	11,0						

<sup>1)</sup> Anchor version B M6 fvz: no performance assessed

Characteristic resistance  $N_{Rk,p,cr}$  and factor  $\psi_{c,cr}$  and  $k_{cr,N}$  for cracked concrete: no performance assessed

<sup>2)</sup> In absence of other national regulations

<sup>3)</sup> Restricted to the use of structural components with  $h_{ef} < 40\text{mm}$  which are statically indeterminate and subject to internal exposure conditions only

<sup>4)</sup>  $N^0_{Rk,c}$  according to EN 1992-4:2018

**Wedge Anchor B**

**Performance**

Characteristic values for **tension loads, stainless steel**

**Annex C2**

**Table C3: Characteristic values for shear loads**

Anchor size				M6	M8	M10	M12	M16	M20
Installation factor		$\gamma_{inst}$	[-]	1,0					
<b>Steel failure without lever arm</b>									
Characteristic resistance	zinc plated steel <sup>1)</sup>	$V_{Rk,s}^0$	[kN]	5	11	17	25	44	69
	stainless steel	$V_{Rk,s}^0$	[kN]	7	12	19	27	50	86
Ductility factor		$k_7$	[-]	1,0					
<b>Steel failure with lever arm</b>									
Characteristic bending resistance	zinc plated steel <sup>1)</sup>	$M_{Rk,s}^0$	[Nm]	9	23	45	78	186	363
	stainless steel	$M_{Rk,s}^0$	[Nm]	10	24	49	85	199	454
Partial factor <sup>4)</sup> for $V_{Rk,s}^0$ and $M_{Rk,s}^0$	zinc plated steel <sup>1)</sup>	$\gamma_{Ms}$	[-]	1,25				1,33	
	stainless steel	$\gamma_{Ms}$	[-]	1,25				1,4	
<b>Concrete pry-out failure</b>									
Factor for $h_{ef}$	zinc plated steel <sup>1)</sup>	$k_8$	[-]	1,0	2,3	2,5	2,9	2,8	3,1
	stainless steel	$k_8$	[-]	1,0	2,3	2,8	2,8	3,0	3,3
<b>Concrete edge failure</b>									
Effective length of anchor in shear loading	for $h_{ef,1}$	$l_f$	[mm]	30 <sup>2)</sup>	35 <sup>2)</sup>	42	50	64	78
	for $h_{ef,2}$	$l_f$	[mm]	40	44	48	65	82 (80) <sup>3)</sup>	100
	for $h_{ef,3}$	$l_f$	[mm]	60	70	80	100	120	115
Outside diameter of anchor		$d_{nom}$	[mm]	6	8	10	12	16	20

<sup>1)</sup> Anchor version B M6 fvz: no performance assessed

<sup>2)</sup> Restricted to the use of structural components which are statically indeterminate and subject to internal exposure conditions only

<sup>3)</sup> Anchor version stainless steel

<sup>4)</sup> In absence of other national regulations

**Wedge Anchor B**

**Performance**  
Characteristic values for **shear loads**

**Annex C3**

**Table C4: Displacements under tension load**

Anchor size			M6	M8	M10	M12	M16	M20
<b>Embedment depth <math>h_{ef,1}</math></b>								
<b>zinc plated steel <sup>1)</sup></b>								
Tension load	N	[kN]	2,9	5,0	6,5	8,5	12,3	16,6
Displacement	$\delta_{N0}$	[mm]	0,3	0,4				
	$\delta_{N\infty}$	[mm]	0,6	1,8				
<b>stainless steel</b>								
Tension load	N	[kN]	2,9	4,3	5,7	8,5	12,3	16,6
Displacement	$\delta_{N0}$	[mm]	0,4	0,7	0,4	0,4	0,6	1,5
	$\delta_{N\infty}$	[mm]	1,3					2,9
<b>Embedment depth <math>h_{ef,2}</math> and <math>h_{ef,3}</math></b>								
<b>zinc plated steel <sup>1)</sup></b>								
Tension load	N	[kN]	4,3	5,8	7,6	11,9	16,7	23,8
Displacement	$\delta_{N0}$	[mm]	0,4	0,5				
	$\delta_{N\infty}$	[mm]	0,7	2,3				
<b>stainless steel</b>								
Tension load	N	[kN]	3,6	5,7	7,6	11,9	17,2	24,0
Displacement	$\delta_{N0}$	[mm]	0,7	0,9	0,5	0,6	0,9	2,1
	$\delta_{N\infty}$	[mm]	1,8					4,2

<sup>1)</sup> Anchor version B M6 fvz: no performance assessed

**Table C5: Displacements under shear loads**

Anchor size			M6	M8	M10	M12	M16	M20
<b>zinc plated steel <sup>1)</sup></b>								
Shear load	V	[kN]	2,9	6,3	9,7	14,3	23,6	37,0
Displacement	$\delta_{V0}$	[mm]	1,2	1,5	1,6	2,6	3,1	4,4
	$\delta_{V\infty}$	[mm]	2,4	2,2	2,4	3,9	4,6	6,6
<b>stainless steel</b>								
Shear load	V	[kN]	4,0	6,9	10,9	15,4	28,6	43,7
Displacement	$\delta_{V0}$	[mm]	1,1	2,0	1,2	2,0	2,2	2,1
	$\delta_{V\infty}$	[mm]	1,7	3,0	1,8	3,0	3,3	3,2

<sup>1)</sup> Anchor version B M6 fvz: no performance assessed

**Wedge Anchor B**

**Performance  
Displacements**

**Annex C4**