

Public-law institution jointly founded by the federal states and the Federation

European Technical Assessment Body  
for construction products



## European Technical Assessment

**ETA-10/0094**  
**of 5 March 2026**

English translation prepared by DIBt - Original version in German language

### General Part

Technical Assessment Body issuing the European Technical Assessment:

Deutsches Institut für Bautechnik

Trade name of the construction product

Load bearing bold stair WE1 and WF2 System "Thumm"

Product family  
to which the construction product belongs

Prefabricated stair kits

Manufacturer

Thumm Treppen GmbH  
In der Au 14  
72622 Nürtingen  
GERMANY

Manufacturing plant

Thumm Technologie GmbH  
In der Au 11  
72622 Nürtingen

This European Technical Assessment  
contains

15 pages including 3 annexes which form an integral part  
of this assessment

This European Technical Assessment is  
issued in accordance with Article 95(4) of  
Regulation (EU) 2024/3110, on the basis of

EAD 340006-00-0506

This version replaces

ETA-10/0094 issued on 27 April 2015

The European Technical Assessment is issued by the Technical Assessment Body in its official language. Translations of this European Technical Assessment in other languages shall fully correspond to the original issued document and shall be identified as such.

Communication of this European Technical Assessment, including transmission by electronic means, shall be in full. However, partial reproduction may only be made with the written consent of the issuing Technical Assessment Body. Any partial reproduction shall be identified as such.

This European Technical Assessment may be withdrawn by the issuing Technical Assessment Body, in particular pursuant to information by the Commission in accordance with Article 36(3) of Regulation (EU) No 2024/3110.

## Specific Part

### 1 Technical description of the product

The load-bearing bolt stair WE1 and WF2 System "Thumm" is a prefabricated stair system which consists of steps made of natural stone or artificial stone (cement bonded or reaction resin bonded), load-bearing bolts and wall ties.

The steps consist of two plates that are glued together by an intermediate GFK-layer.

On the wall side and on the wall-free side the steps of the WF2-stair are connected with each other by one load-bearing bolt per side. On the wall side each step is equipped with one wall tie, which is anchored in the staircase wall. In the area of openings in the wall alternatively a construction with fixed load-bearing bolts and strengthened wall ties at the beginning and at the end or a steel beam (wall-replacement-beam according to Annex A3) can be used.

The steps of the WE1-stair are connected with each other by a load-bearing bolt on the wall-free side. On the wall side the steps are embedded in the wall.

The product description is given in Annex A. The material values, dimensions and tolerances of the components of the stair not indicated in the annexes shall correspond to the values laid down in the technical documentation<sup>1</sup>.

### 2 Specification of the intended use in accordance with the applicable European Assessment Document

The performances given in Section 3 are only valid if the stair is used in compliance with the specifications and conditions given in Annex B.

The verification and assessment methods on which this European Technical Assessment is based lead to the assumption of a working life of the stair of at least 50 years. The indications given on the working life cannot be interpreted as a guarantee given by the producer, but are to be regarded only as a means for choosing the right products in relation to the expected economically reasonable working life of the works.

<sup>1</sup> The technical documentation includes all information provided by the manufacturer that is necessary for the production, installation and maintenance of the stair. This primarily comprise the structural analysis, construction drawings, and the manufacturer's installation instructions. The confidential part of this documentation is stored at the Deutsches Institut für Bautechnik. If this confidential section is relevant to the tasks of the approved bodies within the framework of the AVCP system certification process, it will also be provided to those bodies.

### 3 Performance of the product and references to the methods used for its assessment

#### 3.1 Mechanical resistance and stability (BWR 1)

| Essential characteristic   | Performance   |
|--|---|
| Load-bearing capacity <ul style="list-style-type: none"> <li>- Load-bearing capacity of the stair</li> <li>- Load-bearing capacity of components of the stair</li> <li>- Load-bearing capacity of fixings</li> </ul> | $Q_{Rk}$ , $q_{Rk}$ and $h_{Rk}$ : See Annex C3<br>$H_{Rk}$ : No performance assessed<br>$M_{Rk}$ , $V_{Rk}$ , $N_{Rk}$ , $E$ , $G$ , $f_{mk}$ und $f_{vk}$ :<br>See technical documentation of this European Technical Assessment<br>See technical documentation of this European Technical Assessment |
| Load-Displacement behaviour  | $w_q$ and $w_Q$ : See Annex C3  |
| Vibration behaviour  | First natural frequency: $f_1 \geq 5$ Hz<br>Deflection under a single load $F = 1$ kN:<br>$w_{Q1} \leq 5$ mm  |
| Prevention of progressive collapse   | Failure of individual components of the stair does not lead to a progressive collapse of the complete stair   |
| Residual load-bearing capacity   | Local material failure does not lead to an abrupt total loss of load-bearing capacity of the stair  |
| Long-term behaviour  | Load-bearing capacity are ensured under an appropriate use and maintenance over the indicated working life  |
| Resistance to earthquakes  | No performance assessed   |
| Durability against physical, chemical, biological agents   | Adequate durability for the intended use under an appropriate use and maintenance   |

#### 3.2 Safety in case of fire (BWR 2)

| Essential characteristic | Performance             |
|--------------------------|-------------------------|
| Reaction to fire         | See Annex A5            |
| Fire resistance          | No performance assessed |

#### 3.3 Hygiene, health and the environment (BWR 3)

| Essential characteristic     | Performance  |
|------------------------------|--|
| Release of formaldehyde      | No materials containing formaldehyde are used      |
| Release of pentachlorophenol | No materials containing pentachlorophenol are used |
| Radioactive emission         | No performance assessed                            |

### 3.4 Safety in use (BWR 4)

| Essential characteristic              | Performance  |
|---------------------------------------|--|
| Geometry                              | See Annex C1   |
| Slipperiness                          | No performance assessed  |
| Equipment of the stair for a safe use | No performance assessed  |
| Safe breakage of components           | No brittle failure of individual stair components  |
| Impact resistance                     | Verified for steps made of natural stone or artificial stone up to a fall height of a steel weight (50 kg) of 200 mm |

### 4 Assessment and verification of constancy of performance (AVCP) system applied, with reference to its legal base

In accordance with the European Assessment Document EAD No. 340006-00-0506 the applicable European legal act is: 1999/89/EC

The System to be applied is: 2+

In addition, with regard to reaction to fire for products covered by the European Assessment Document EAD No. 340006-00-0506 the applicable European legal act is: 2001/596/EC

The System to be applied is: 4

### 5 Technical details necessary for the implementation of the AVCP system, as provided for in the applicable European Assessment Document

Technical details necessary for the implementation of the AVCP system are laid down in the control plan deposited at Deutsches Institut für Bautechnik.

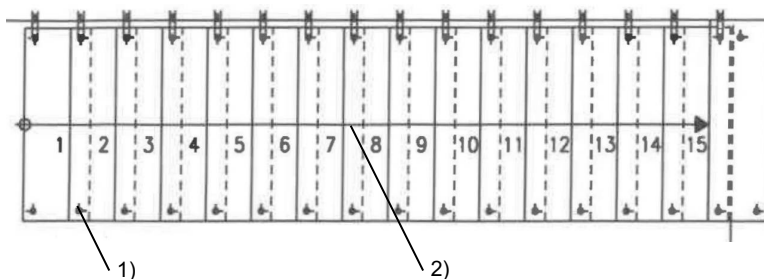
Issued in Berlin on 5 March 2026 by Deutsches Institut für Bautechnik

Dipl.-Ing. Beatrix Wittstock  
Head of Section

*beglaubigt:*  
Stiller

### Types of plans

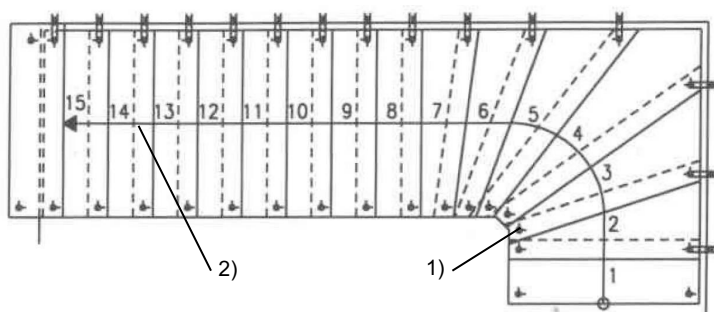
**Type 16G**



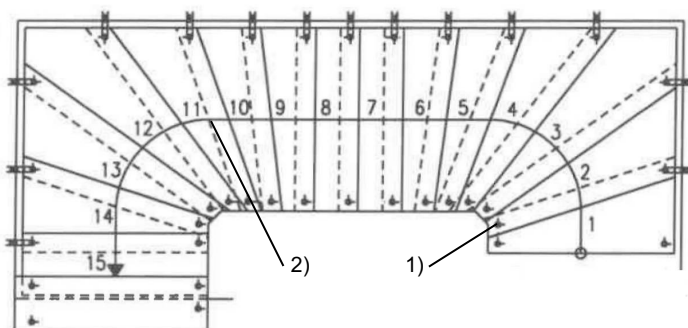
In the area of openings  
wall-replacement-beams  
are possible (see Annex A3).

- 1) additional support  
(according to Annex C2)
- 2) walking line is exemplified, position  
may be chosen freely within the  
walking zone, walking zone is 20 %  
of the clear width of the stair in the  
middle of the stair

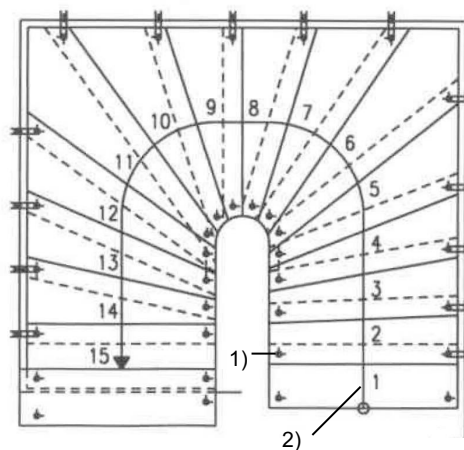
**Type 16V**



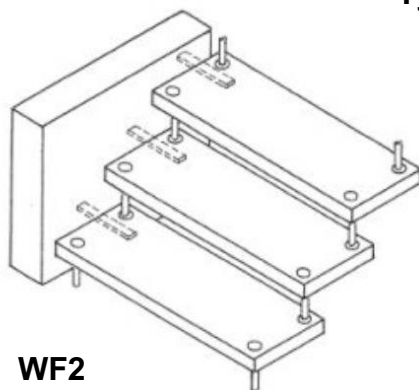
**Type 16VV**



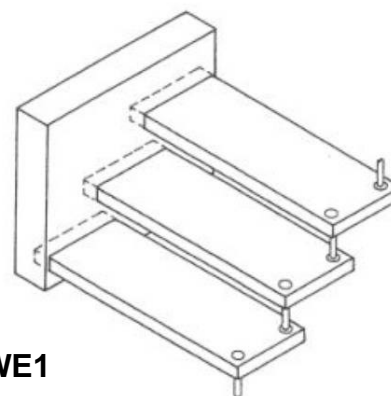
**Type 16H**



### Types of constructions



**WF2**



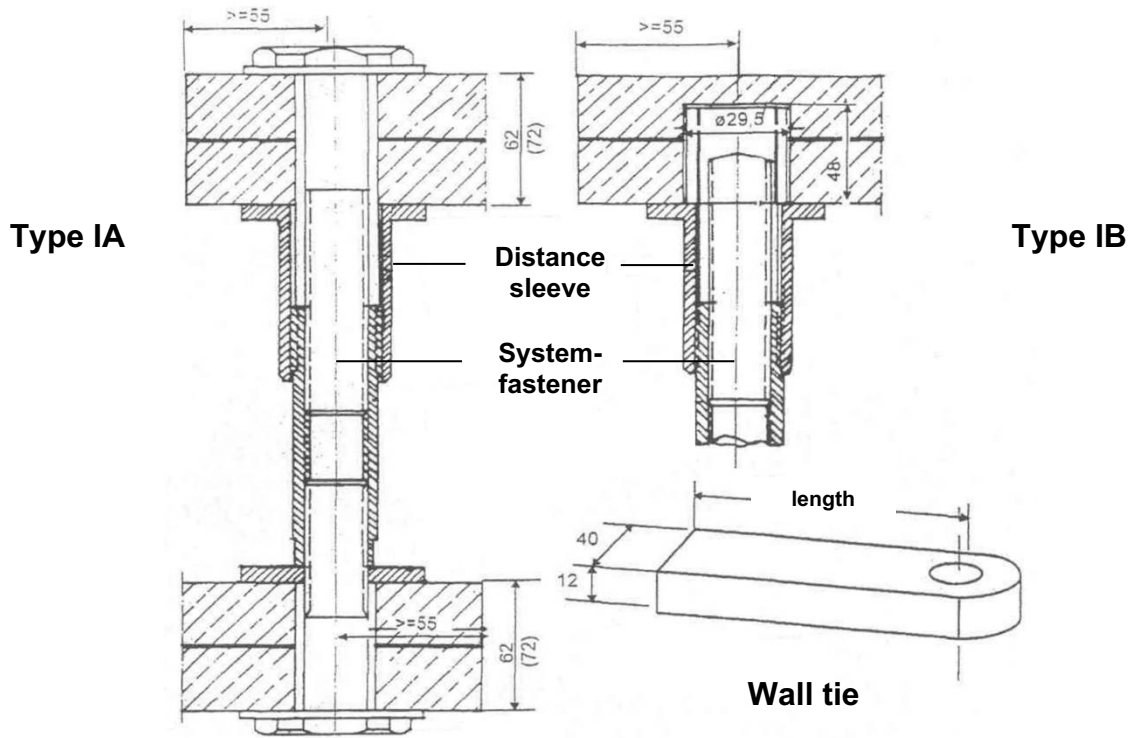
**WE1**

**Load bearing bold stair WE1 and WF2 System "Thumm"**

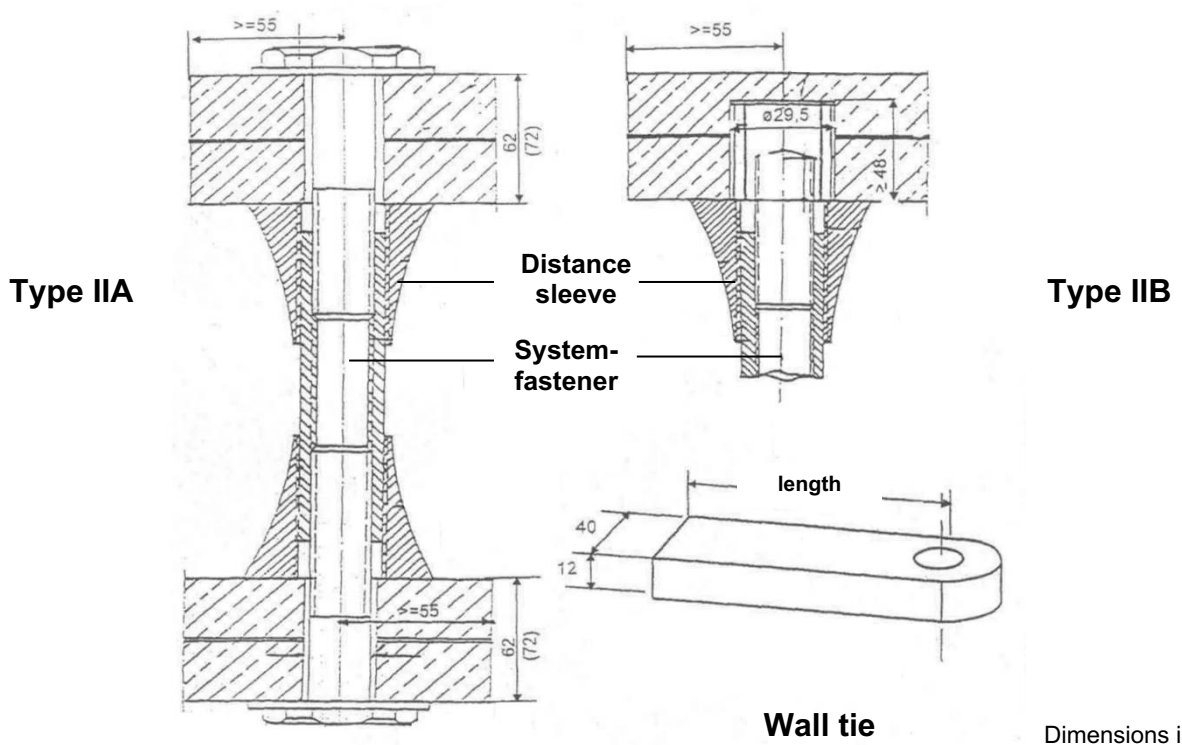
Product (Types of plans and constructions)

**Annex A1**

**Load-bearing bolt joint Type I**



**Load-bearing bolt joint Type II**



Dimensions in mm

**Load bearing bolt stair WE1 and WF2 System "Thumm"**

Load-bearing bolt joint and wall tie (standard joint)

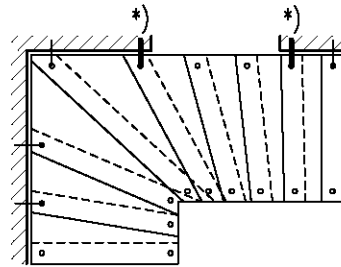
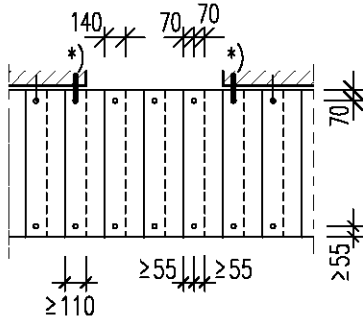
**Annex A2**

### Wall-replacement-beam

#### a) Load-bearing bolt Type III or IV with strengthened wall ties

4 goings in the area of straight steps

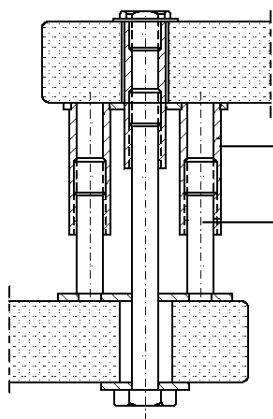
3 goings in the area of tapered steps



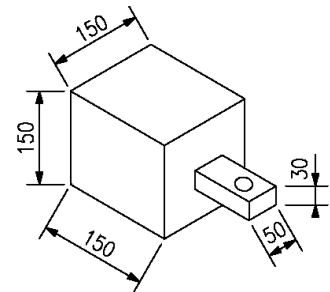
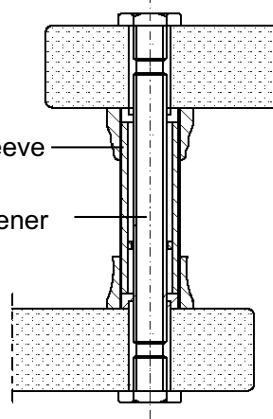
Load-bearing bolt joint Type III

Load-bearing bolt joint Type IV

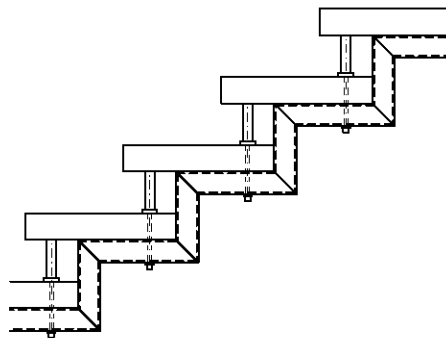
\*) Wall tie (alternatively in-situ concrete  $\geq$  C16/20)



Distance sleeve  
System-fastener



#### b) Cascaded steel beam (hollow section 60/60/5)



Dimensions in mm

Further details according to technical documentation

**Load bearing bold stair WE1 and WF2 System "Thumm"**

Wall-replacement-beam

**Annex A3**

**Table 1: Characteristic values of materials of relevant stair components <sup>2)</sup>**

| Component of stair                          |                      | Material | Characteristic values (minimum values) |                      |                      |                      |                 |
|---|----------------------|----------|--|----------------------|----------------------|----------------------|-----------------|
| <b>Components made of natural stone</b>     |                      |          | $E_{0,mean}$                           | $G_{mean}$           | $f_{m,k}$            | $f_{v,k}$            | $\gamma_M^{1)}$ |
|   |                      |          | [N/mm <sup>2</sup> ]                   | [N/mm <sup>2</sup> ] | [N/mm <sup>2</sup> ] | [N/mm <sup>2</sup> ] | [-]             |
| Steps                                       | Resistance class I   | 30000    | 10000                                  | 6,90                 | 6,25                 | 1,8                  |                 |
|   | Resistance class II  |          |  | 7,50                 | 7,50                 |                      |                 |
|   | Resistance class III |          |  | 8,75                 | 8,75                 |                      |                 |
|   | Resistance class IV  |          |  | 10,00                | 10,00                |                      |                 |
|   | Resistance class V   |          |  | 11,25                | 11,25                |                      |                 |
|   | Resistance class VI  |          |  | 12,50                | 12,50                |                      |                 |
| <b>Components made of artificial stones</b> |                      |          | $E_{0,mean}$                           | $G_{mean}$           | $f_{m,k}$            | $f_{v,k}$            | $\gamma_M^{1)}$ |
|   |                      |          | [N/mm <sup>2</sup> ]                   | [N/mm <sup>2</sup> ] | [N/mm <sup>2</sup> ] | [N/mm <sup>2</sup> ] | [-]             |
| Steps                                       | Resistance class I   | 30000    | 10000                                  | 6,25                 | 6,25                 | 1,6                  |                 |
|   | Resistance class II  |          |  | 7,50                 | 7,50                 |                      |                 |
|   | Resistance class III |          |  | 8,75                 | 8,75                 |                      |                 |
|   | Resistance class IV  |          |  | 10,00                | 10,00                |                      |                 |
|   | Resistance class V   |          |  | 11,25                | 11,25                |                      |                 |
|   | Resistance class VI  |          |  | 12,50                | 12,50                |                      |                 |
| <b>Components made of steel</b>             |                      |          | $E_{0,mean}$                           | $G_{mean}$           | $f_{y,k}$            | $f_{u,k}$            | $\gamma_M^{1)}$ |
|   |                      |          | [N/mm <sup>2</sup> ]                   | [N/mm <sup>2</sup> ] | [N/mm <sup>2</sup> ] | [N/mm <sup>2</sup> ] | [-]             |
| System-fastener                             | steel                | 210000   | 81000                                  | 240                  | 400                  | 1,1                  |                 |
| Distance sleeve                             | GD-Al Si 8 Cu 3      | 70000    | 27000                                  | 160                  | 240                  | 1,1                  |                 |
| Wall tie                                    | steel                | 210000   | 81000                                  | 360                  | 600                  | 1,1                  |                 |
| Cascaded beam                               | steel                | 210000   | 81000                                  | 240                  | 360                  | 1,1                  |                 |

<sup>1)</sup> recommended partial safety factor, in absence of other national regulations

<sup>2)</sup> For each laminate process but at least each 100 m<sup>2</sup> the torsion resistance of at least one step has to be tested. On the basis of the ultimate torsion resistance reached the material is to be classified to the resistance classes. The ultimate torsion resistance shall not be less than values  $f_{v,k}$  of the appropriate resistance class. More details see control plan.

**Load bearing bold stair WE1 and WF2 System "Thumm"**

Characteristic values of materials of relevant stair component

**Annex A4**

**Table 2: Minimum dimensions of relevant stair components and reaction to fire**

| Component       | Material                               | Dimension               |      | Value            | Reaction to fire <sup>1)</sup> |
|-----------------|--|-------------------------|------|------------------|--------------------------------|
| Steps           | Natural stone                          | Thickness               | [mm] | 62 <sup>1)</sup> | A1                             |
|                 | Artificial stone cement bonded         | Thickness               | [mm] | 62 <sup>1)</sup> |                                |
|                 | Artificial stone reaction resin bonded | Thickness               | [mm] | 62 <sup>1)</sup> | F (No performance assessed)    |
| System-fastener | Steel                                  | Diameter                | [mm] | 14               | A1                             |
| Distance sleeve | GD-Al Si 8 Cu 3                        | Inner diameter          | [mm] | 14               | A1                             |
| Wall tie        | Flat steel                             | Height / width / length | [mm] | 12 / 40 / 210    | A1                             |
|                 |  | Embedment depth - wall  | [mm] | 100              |                                |

<sup>1)</sup> two plates (minimum thickness 30 mm) and intermediate GFK-layer (thickness 2 mm)

**Load bearing bold stair WE1 and WF2 System "Thumm"**

Minimum dimensions of relevant stair components  
and reaction to fire

**Annex A5**

## Specification of intended use (Part 1)

### Intended use:

- European Technical Assessment applies for a construction system.
- For the specific case of use the corresponding type of stair is manufactured within the context of the values defined in this European Technical Assessment.
- Values of this ETA apply to all types of stairs; the real dimensions follow in accordance with the relevant case of use.

### Stair subject to:

- Static and quasi static loads

### Use conditions:

- Indoor stair
- Air temperatures between +5 °C and +30 °C
- Relative air humidity between 30% and 70%
- To the individual requirements handrail and barrier can be attached to the stair optionally. Conditions for possible handrail/barrier:
  - Dead load  $\leq 0,15$  kN/m
  - Height  $\leq 1,00$  m
  - Distance of baluster  $\leq 0,85$  m

### Design:

- Design of the stair according to the annexes and the technical documentation of this European Technical Assessment.
- Depending on the relevant type of plan the declared resistance class of the steps shall not be less than the required resistance class according to Annex C2.
- Fastening of the stair to the construction works according to the annexes and the technical documentation of this Technical European Assessment.
- Verification of the transmission of loads to the construction works by the civil engineer responsible for the construction works.
- Load bearing capacity at ultimate limit state:

$$q_k \cdot \gamma_Q \leq q_{Rk} / \gamma_M$$

$$Q_k \cdot \gamma_Q \leq Q_{Rk} / \gamma_M$$

$$h_k \cdot \gamma_Q \cdot \psi_0 \leq h_{Rk} / \gamma_M$$

with

$q_{Rk}, Q_{Rk}, h_{Rk}$ : characteristic values of resistance; see Table 5

$\gamma_M$ : recommended material partial safety factor; see Table 5

$q_k, Q_k, h_k$ : characteristic values of imposed loads according to EN 1991-1-1:2002 + AC:2009

$\gamma_Q = 1,5$ : recommended partial safety factor, in absence of other national regulations

$\psi_0 = 0,7$ : recommended combination factor, in absence of other national regulations

- Maximum characteristic values of imposed loads under consideration of the partial factors mentioned above; see Table 7

**Load bearing bold stair WE1 and WF2 System "Thumm"**

Specification of intended use (Part 1)

**Annex B1**

## Specification of intended use (Part 2)

### Installation:

- Installation by personal appropriately trained and authorized by the manufacturer by means of the technical documentation of this European Technical Assessment
- Installation only in the way as specified in the technical documentation of this European Technical Assessment
- Sufficient support of the stair when assembling
- Installation of the stair components without additional stresses resulting from restraints not intended by the structural design
- Installation of stair components without significant defects and cracks
- Bolted connections are secured to prevent loosening by vibrations

### Indication of the manufacturer:

- Ensure that all persons involved will be appropriately informed about the specific conditions according to sections 1 and 2 (including the annexes to which reference is being made as well as the not confidential parts of the technical documentation deposited to this European Technical Assessment)
- Instructions for use should provide information as to use, maintenance and repair of the stair. Including the information of retightens the bolting of the load-bearing bolts and connections according to Annex A2 and A3 after the first heating season

**Load bearing bold stair WE1 and WF2 System "Thumm"**

Specification of intended use (Part 2)

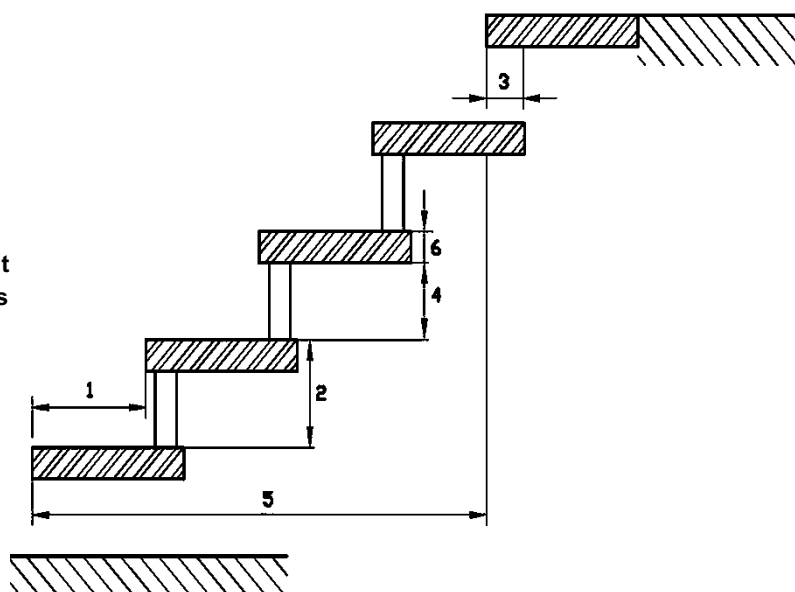
**Annex B2**

**Table 3: Geometry**

| Designation                             |                                    |      | Dimension            |                      |
|---|------------------------------------|------|----------------------|----------------------|
|   |                                    |      | Minimum              | Maximum              |
| Going                                   | Step on walking line <sup>1)</sup> | [mm] | 210                  | 290 <sup>2)</sup>    |
|   | Tapered step                       | [mm] | 100 <sup>2) 3)</sup> | 550 <sup>2) 4)</sup> |
| Rise of the stairs <sup>1)</sup>        |                                    | [mm] | 140 <sup>2)</sup>    | 210                  |
| Pitch of the walking line <sup>1)</sup> |                                    | [°]  | 21                   | 45                   |
| Overlap of the steps                    |                                    | [mm] | 110                  | - <sup>5)</sup>      |
| Number of rises                         |                                    | [-]  | 3                    | 16                   |
| Openings                                | Between stairs and wall            | [mm] | - <sup>5)</sup>      | 55                   |
|   | Between consecutive steps          | [mm] | - <sup>5)</sup>      | 148                  |
| Clear width of stairs                   |                                    | [mm] | 500                  | 1050                 |
| Minimum headroom                        |                                    | [mm] | - <sup>5)</sup>      |                      |
| Length of the flight                    |                                    | [mm] | - <sup>5)</sup>      | 3900                 |
| Thickness of steps                      |                                    | [mm] | 62                   | - <sup>5)</sup>      |

- 1) values are constant within one flight
- 2) tolerance between nominal value and actual value = ± 5 mm
- 3) inside of tapered step
- 4) outside of tapered step
- 5) not relevant

- 1 Going
- 2 Rise
- 3 Overlap
- 4 Opening between consecutive steps
- 5 Length of the flight
- 6 Thickness of steps



**Load bearing bold stair WE1 and WF2 System "Thumm"**

Geometry

**Annex C1**

**Table 4: Required resistance classes according to Annex A4, Table 1 for types of plans according to Annex A1**

| Type of plan          | Support at step | Number of steps <sup>2)</sup> | Thickness of steps 62 mm |                        | Thickness of steps 72 mm |                      |
|-----------------------|-----------------|-------------------------------|--------------------------|------------------------|--------------------------|----------------------|
|                       |                 |                               | Artificial stone         | Natural stone          | Artificial stone         | Natural stone        |
| 16G                   | -               | 15                            | IV                       | V                      | III                      | IV                   |
|                       | 2               | 14                            | IV                       | V                      | II                       | III                  |
|                       | 3               | 13                            | III                      | IV                     | II                       | III                  |
|                       | 4               | 12                            | III                      | III                    | I                        | II                   |
|                       | 5               | 11                            | II                       | III                    | I                        | I                    |
|                       | 6               | 10                            | I                        | II                     | I                        | I                    |
|                       | 7               | 9                             | I                        | I                      | I                        | I                    |
| 16V                   | -               | 15                            | IV                       | V                      | III                      | III                  |
|                       | 2               | 14                            | III                      | IV                     | II                       | III                  |
|                       | 3               | 13                            | II                       | III                    | I                        | II                   |
|                       | 4               | 12                            | II                       | II                     | I                        | I                    |
|                       | 5               | 11                            | I                        | II <sup>3)</sup>       | I                        | I                    |
| 16VV                  | -               | 15                            | IV                       | IV                     | II                       | III                  |
|                       | 2               | 14                            | II                       | II (III) <sup>1)</sup> | I (II) <sup>1)</sup>     | I (II) <sup>1)</sup> |
|                       | 3               | 13                            | II                       | II (III) <sup>1)</sup> | I                        | II                   |
|                       | 4               | 12                            | I                        | II                     | I                        | I                    |
|                       | 5               | 11                            | I                        | II <sup>3)</sup>       | I                        | I                    |
| 16H                   | -               | 15                            | IV                       | V                      | III                      | III                  |
|                       | 2               | 14                            | IV                       | V                      | III                      | III                  |
|                       | 3               | 13                            | IV                       | V                      | III                      | III                  |
|                       | 4               | 12                            | III                      | IV                     | II                       | III                  |
|                       | 5               | 11                            | III                      | III                    | I                        | II                   |
|                       | 6               | 10                            | III                      | III                    | I                        | II                   |
|                       | 7               | 9                             | II                       | III                    | I                        | II                   |
| Wall-replacement-beam |                 |                               | III                      |                        | II                       |                      |

<sup>1)</sup> values in brackets valid for plans with straight bottom step or straight top step

<sup>2)</sup> number of steps without additional support

<sup>3)</sup> resistance class I sufficiently if the length of the steps  $\leq 940$  mm

**Load bearing bold stair WE1 and WF2 System "Thumm"**

Required resistance classes

**Annex C2**

**Table 5: Load-bearing capacity - Characteristic values of resistance**

| Material         | Component | Type of loading   | Characteristic values of resistance |                      |      | $\gamma_M^{1)}$ |
|------------------|-----------|---|-------------------------------------|----------------------|------|-----------------|
|                  |           |   | $q_{Rk}$                            |                      |      |                 |
| Natural stone    | flight    | vertical variable uniformly distributed load              | $q_{Rk}$                            | [kN/m <sup>2</sup> ] | 8,10 | 1,5             |
|                  | step      | vertical variable single load                             | $Q_{Rk}$                            | [kN]                 | 5,40 |                 |
|                  | barrier   | horizontal variable uniformly distributed load on barrier | $h_{Rk}$                            | [kN/m]               | 0,95 |                 |
| Artificial stone | flight    | vertical variable uniformly distributed load              | $q_{Rk}$                            | [kN/m <sup>2</sup> ] | 7,20 | 1,6             |
|                  | step      | vertical variable single load                             | $Q_{Rk}$                            | [kN]                 | 4,80 |                 |
|                  | barrier   | horizontal variable uniformly distributed load on barrier | $h_{Rk}$                            | [kN/m]               | 0,84 |                 |

<sup>1)</sup> recommended partial safety factor, in absence of other national regulations

**Table 6: Deflections under loading**

| Deflection of the flight under uniformly distributed load            |       |                      |                    |
|--|-------|----------------------|--------------------|
| uniformly distributed load   | $q_k$ | [kN/m <sup>2</sup> ] | 3,0                |
| length of the median line of the flight                              | L     | [mm]                 | 3900 <sup>1)</sup> |
| deflection under load $F_S$ related to the median line of the flight | $w_q$ | [mm]                 | $\leq L/200$       |
| Deflection of the step under single point load                       |       |                      |                    |
| single load  | $Q_k$ | [kN]                 | 2,0                |
| clear width of the stair   | L     | [mm]                 | 1050               |
| deflection under load $F_S$ related to the clear width of the stair  | $w_Q$ | [mm]                 | $\leq L/200$       |

<sup>1)</sup> with additional support according to Annex C2, L = reference length = distance between supports

**Table 7: Imposed loads**

| Type of loading   | Imposed loads |                      |     |
|---|---------------|----------------------|-----|
| vertical variable uniformly distributed load              | $q_k$         | [kN/m <sup>2</sup> ] | 3,0 |
| vertical variable single load                             | $Q_k$         | [kN]                 | 2,0 |
| horizontal variable uniformly distributed load on barrier | $h_k$         | [kN/m]               | 0,5 |

**Load bearing bold stair WE1 and WF2 System "Thumm"**

Load-bearing capacity - Characteristic values of resistance,  
Deflections under loading  
Imposed loads

**Annex C3**